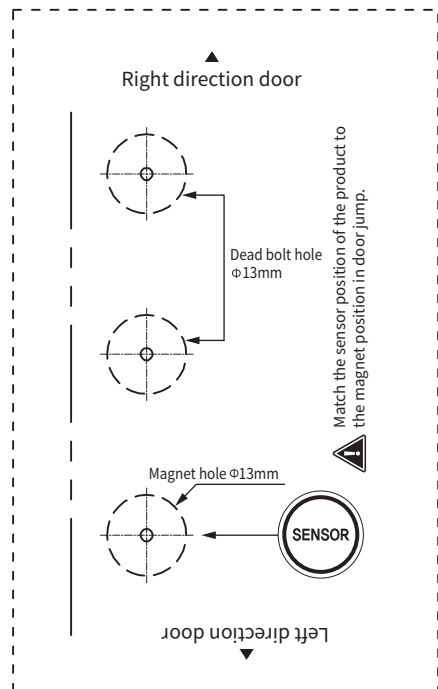




S-260 Digital Glass Door Lock

Product installation

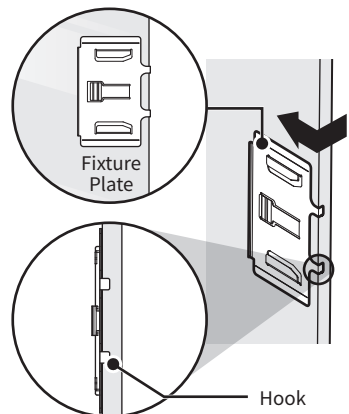
Template for single door jamb preparation.



Installation template

- 1 Mark 3 hole locations including magnet location. (Check handing)
- 2 After confirming the drill location matches the location of the product, drill using a 13mm drill bit.
- 3 Insert battery and check if it operates by pressing [Lock/Unlock] button.
- 4 Double door or frameless glass, use optional strike (S-260H).

Right door handle shown.

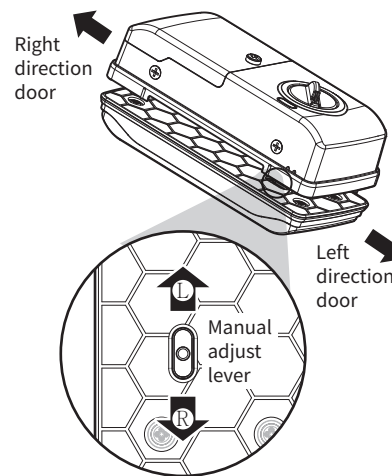


Step 1 How to install the fixture plate

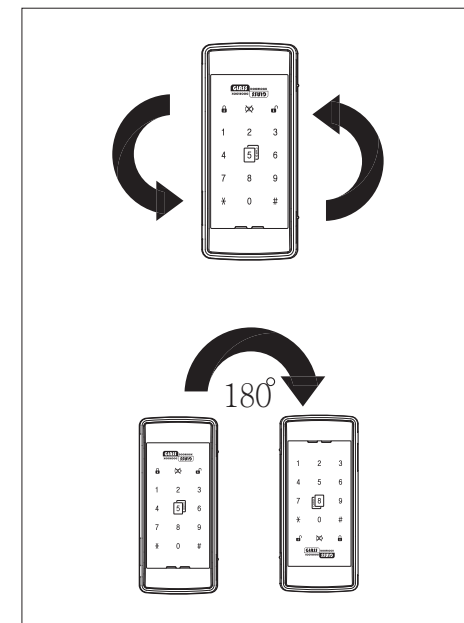
- 1 Remove the double sided tape protection film on the back of the fixture plate.
- 2 Attach the fixture plate to the interior of the glass door.

Step 2 When left/right direction is not converted.

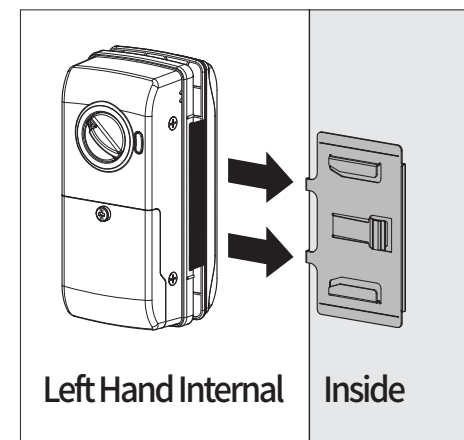
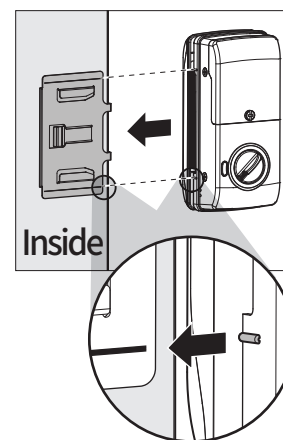
Keypad will adjust automatically to handing of door.



Please use adjustment lever if the keypad doesn't automatically adjust.



Step 3



Slide the main body fully against the two protruding parts and the two fixed plates.

Installation Considerations

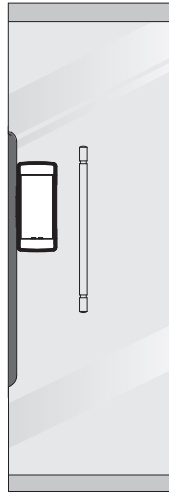
- Glass door gap : 2.5mm~5mm
- 2-door glass door upper and lower deviation : within 2.5mm

2-door glass door before and after deviation : within 2.5mm

- If doors are severely slanted, horizontal glass door and before/after should be within 2mm.
- If the gap of glass door is bent out of shape, automatic locking may be difficult or fail. (Proceed with caution)

Dead bolt for safety glass doors

For details regarding product and installing method, please refer to the website.

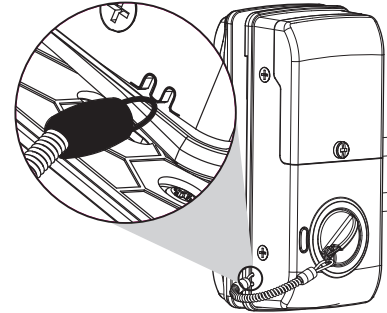


※ It is recommended to install without the safety glass rubber.

How to install thumbturn cord

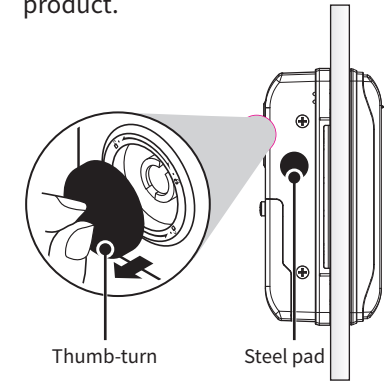
The cord is fitted by default. See below when reinstalling.

Disassemble the back and attach it to the connection area.



How to install a steel pad

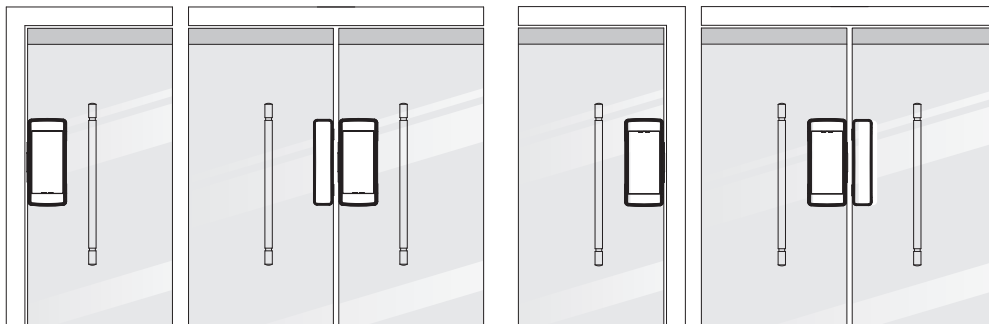
- 1 Remove adhesive protection and attach the steel pad to the side of the product.
- 2 Remove Thumb-turn from the product.



- 3 Remove thumb-turn and attach it to steel pad when going out, and open and close the door to activate the outing mode.

Left/Right direction changing method

Right door handing shown.



1 RH Single 2 RH Double (w/S-260H)

1 LH Single 2 LH Double (w/S-260H)

Australia
Phone: 1800 098 094
Email: auinfo@allegion.com
www.allegion.com.au

South East Asia
Phone: +65 6488 2562
Email: sea.info@allegion.com
www.allegion.com

New Zealand
Phone: 0800 477 869
Email: nzinfo@allegion.com
www.allegion.co.nz

Middle East, India & Africa
Phone: +971 4 818 8999
Email: contactmea@allegion.com
www.allegion.com/mea

