

Sliding & Folding Solutions

S02 Finish glossary

S02 Warranty

Straight sliding top hung

S03 Brio Sprintline 30

S04 Brio Wardrobe Single 50

S05 Brio Wardrobe Double 50

S06 Brio Single Run 60

S07 Brio Quick Run 120

S09 Brio Single Run Exterior 120

S10 Brio Single Run 180

S11 Brio Single Run 350

S12 Brio Simultaneous and Telescopic

S13 Brio Zero Clearance 60

S14 Brio Zero Clearance 180 and 350

S15 Brio Open Round Rail Glass 100

S16 Brio Open Bar Rail Timber 80

S17 Brio Open Round Rail Timber 100

S18 Brio Open Square Rail Timber 150

Straight sliding bottom rolling

S19 Brio Wardrobe Roll 50

S20 Brio Wardrobe Roll Trio 50

S21 Brio Timberoll

S22 Brio Guide channels and accessories

Interior folding

S24 Brio Multifold 30

S25 Brio Pivotfold 35 and 75

S25 Brio Centrefold 35 and 75

S25 Brio Endfold 35 and 75

S26 Brio Interfold 35F and 50F

S27 Brio Interfold 35 and 50

S28 Brio Guide channels, hinges and accessories

Exterior folding

S29 Brio Weatherfold 4s Served 35

S30 Brio Weatherfold 4s Window 35

S31 Brio Weatherfold 4s 50 and 100 - non-mortice hinges

S33 Brio Weatherfold 4s 50 and 100 - square mortice hinges

S35 Brio Weatherfold 4s 150

S36 Brio Weatherfold 4s accessories

Flush bolts and locking solutions

S37 Brio Flush bolts

S38 Brio 286 Dual point lock

Finish glossary

These colours are indicative only, subject to limitations in the printing process.



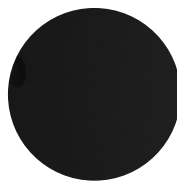
ABZ

Antique Bronze



ANOD

Anodised Aluminium



BLACK

Black Powder Coat



PB

Polished Brass



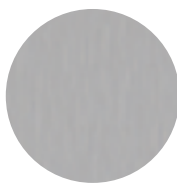
PVD black

PVD black



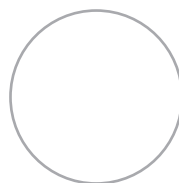
SNP

Satin Nickel Plate



SSS

Satin Stainless Steel



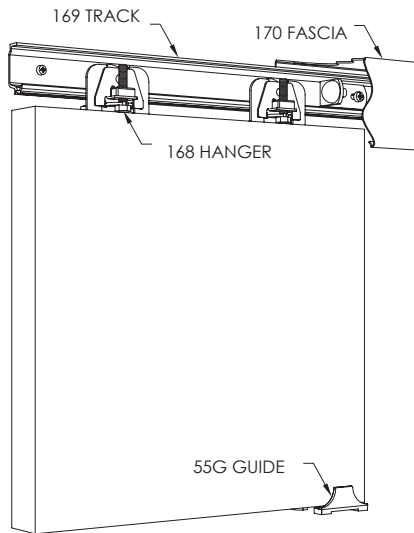
WHITE

White Powder Coat

Warranty

Brio sliding and folding door hardware has a 10 year mechanical warranty.

Brio Sprintline 30



Maximum door weight	30kg
Minimum door thickness	25mm

Sets - includes track and fittings for one door

Description	Code	Price
Kit suitable to hang one door, comprising: 1.6m length of aluminium track, two door hangers, two track mounted door stops, one sawcut guide, one surface mounted guide, all screws and installation instructions.	SL30-16/1	84.00
Kit suitable to hang one door, comprising: 2.4m length of aluminium track, two door hangers, two track mounted door stops, one sawcut guide, one surface mounted guide, all screws and installation instructions.	SL30-24/1	101.00

Fittings pack

Description	Code	Price
Fittings pack with all items needed to hang one door (excluding track), pack comprises two door hangers, two track mounted door stops, one sawcut guide, one surface mounted guide, all screws and installation instructions.	SL30-1PK	50.50

Components

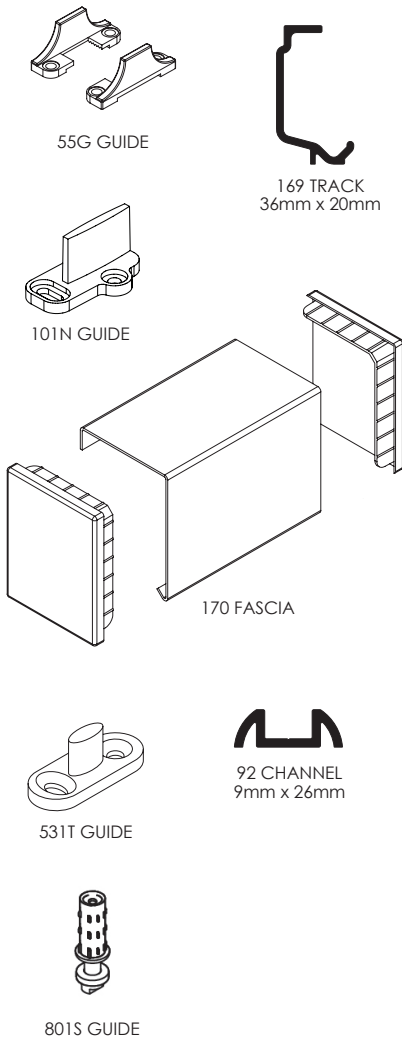
Description	Code	Price
1.6m Sprintline 30 track	169-16	34.50
2.4m Sprintline 30 track	169-24	53.50
Track mounted door stop - steel with rubber buffer	263	11.50
Wall mounted door stop - nylon	28N	8.50
Floor mounted surface guide - nylon	55G	5.60
Sprintline door hanger	168	17.50
Sawcut guide - nylon - floor mounted	101N	6.00

Optional fascia

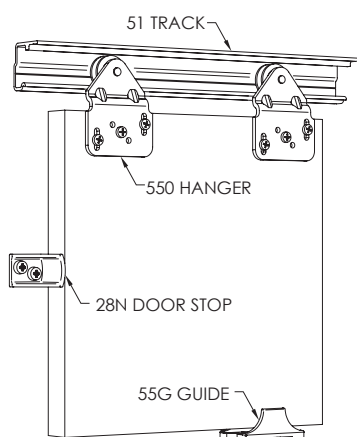
Description	Code	Price
1.8m hook-on aluminium fascia in pearl white finish includes end caps	170-18	122.00
3m hook-on aluminium fascia in pearl white finish includes end caps	170-30	263.00

Alternative door guide systems

Description	Code	Price
Stainless steel sawcut guide	531T	43.00
92 Series spring loaded guide - stainless steel	801S	16.50
4m 92 Series threshold guide channel - aluminium - anodised finish	92-A40	176.00
6m 92 Series threshold guide channel - aluminium - anodised finish	92-A60	237.00



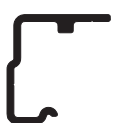
Brio Wardrobe Single 50



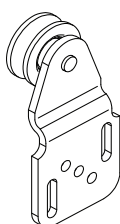
Maximum door weight	50kg
Minimum door thickness	16mm

Sets - includes track and fittings for one door

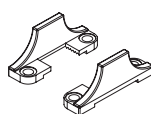
Description	Code	Price
Kit suitable to hang one door, comprising: 1.2m length of aluminium track, two door hangers, two door stops, one sawcut guide, one surface mounted guide, all screws and installation instructions.	WS50-12/1	69.50
Kit suitable to hang one door, comprising: 1.5m length of aluminium track, two door hangers, two door stops, one sawcut guide, one surface mounted guide, all screws and installation instructions.	WS50-15/1	79.50
Kit suitable to hang one door, comprising: 1.8m length of aluminium track, two door hangers, two door stops, one sawcut guide, one surface mounted guide, all screws and installation instructions.	WS50-18/1	94.50



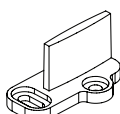
51 TRACK
28mm x 29mm



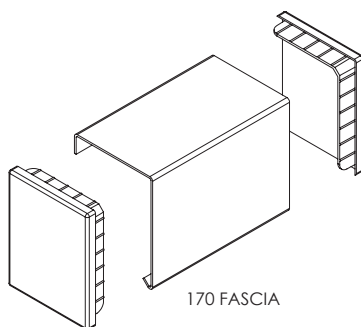
550 HANGER



55G GUIDE



101N GUIDE



170 FASCIA

Fittings pack

Description	Code	Price
Fittings pack with all items needed to hang one door (excluding track), pack comprises of two reversible door hangers, two wall mounted door stops, one sawcut guide, one surface mounted guide, all screws and installation instructions.	WS50-1PK	47.00

Components

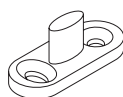
Description	Code	Price
1.2m Wardrobe Single 50 track	51-12	26.50
1.5m Wardrobe Single 50 track	51-15	34.50
1.8m Wardrobe Single 50 track	51-18	48.50
2.4m Wardrobe Single 50 track	51-24	64.50
3m Wardrobe Single 50 track	51-30	81.00
3.6m Wardrobe Single 50 track	51-36	96.50
4.8m Wardrobe Single 50 track	51-48	107.00
Wardrobe Single / Double 50 - Outer hanger	550	14.00
Wardrobe Single / Double 50 - Reversible hanger	552	16.00
Wall mounted door stop - nylon	28N	8.50
Floor mounted surface guide - nylon	55G	5.60
Sawcut guide - nylon - floor mounted	101N	6.00

Optional fascia

Description	Code	Price
1.8m hook-on aluminium fascia in pearl white finish includes end caps	170-18	122.00
3m hook-on aluminium fascia in pearl white finish includes end caps	170-30	263.00

Alternative door guide systems

Description	Code	Price
Stainless steel sawcut guide	531T	43.00
92 Series spring loaded guide - stainless steel	801S	16.50
4m 92 Series threshold guide channel - aluminium - anodised finish	92-A40	176.00
6m 92 Series threshold guide channel - aluminium - anodised finish	92-A60	237.00



531T GUIDE

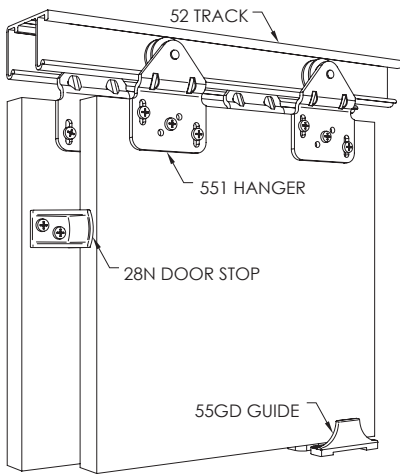


92 CHANNEL
9mm x 26mm



801S GUIDE

Brio Wardrobe Double 50



Maximum door weight	50kg
Minimum door thickness	16mm

Sets - include track and fittings for two or three doors

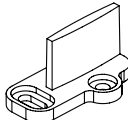
Description	Code	Price
Kit suitable for two doors, comprising: 1.2m length of double run aluminium track, two inner hangers, two outer hangers, two door stops, one double surface mounted guide, two sawcut guides, all screws and installation instructions.	WD50-12/2	116.00
Kit suitable for two doors, comprising: 1.5m length of double run aluminium track, two inner hangers, two outer hangers, two door stops, one double surface mounted guide, two sawcut guides, all screws and installation instructions.	WD50-15/2	123.00
Kit suitable for two doors, comprising: 1.8m length of double run aluminium track, two inner hangers, two outer hangers, two door stops, one double surface mounted guide, two sawcut guides, all screws and installation instructions.	WD50-18/2	137.00
Kit suitable for three doors, comprising: 2.4m length of double run aluminium track, two inner hangers, two outer hangers, two reversible hangers, two door stops, two double surface mounted guides, three sawcut guides, all screws and installation instructions.	WD50-24/3	182.00

Fittings pack

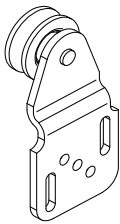
Description	Code	Price
Fittings pack with all items needed to hang two doors (excluding track), pack comprises two inner door hangers, two outer door hangers, one door stop, two sawcut guides, one surface mounted double guide, all screws and installation instructions.	WD50-2PK	70.50



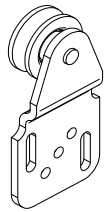
52 TRACK
28mm x 52mm



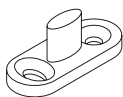
101N GUIDE



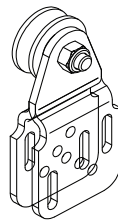
550 HANGER



551 HANGER



531T GUIDE



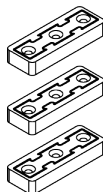
552 HANGER



92 CHANNEL
9mm x 26mm



801S GUIDE



924-DC

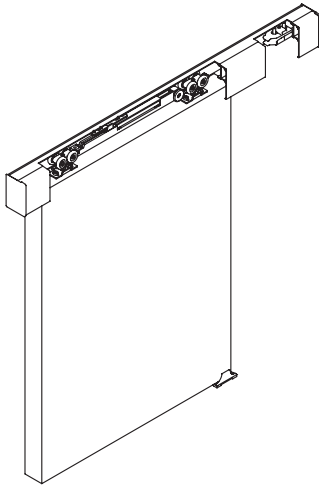
Components

Description	Code	Price
1.2m Wardrobe Double 50 track	52-12	52.00
1.5m Wardrobe Double 50 track	52-15	64.50
1.8m Wardrobe Double 50 track	52-18	78.00
2.4m Wardrobe Double 50 track	52-24	105.00
3m Wardrobe Double 50 track	52-30	132.00
3.6m Wardrobe Double 50 track	52-36	159.00
4.8m Wardrobe Double 50 track	52-48	175.00
Wall mounted nylon door stop	28N	8.50
Floor mounted nylon surface guide for bi-passing doors	55GD	9.70
Wardrobe Single / Double 50 - Outer hanger	550	14.00
Wardrobe Double 50 - Inner hanger	551	14.00
Wardrobe Single / Double 50 - Reversible hanger	552	16.00
Sawcut guide - nylon - floor mounted	101N	6.00

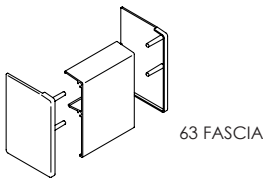
Alternative door guide systems

Description	Code	Price
Stainless steel sawcut guide	531T	43.00
92 Series spring loaded guide	801S	16.50
4m 92 Series threshold guide channel - aluminium - anodised finish	92-A40	176.00
6m 92 Series threshold guide channel - aluminium - anodised finish	92-A60	237.00
Door collector kit	924-DC	24.50

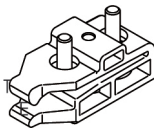
Brio Single Run 60



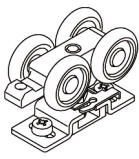
91Z BRACKET



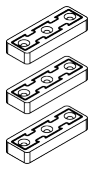
63 FASCIA

60A TRACK
31mm x 30mm

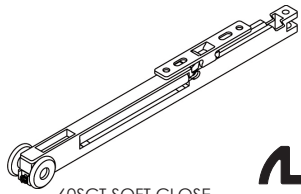
60CS CLIP STOP



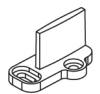
607 HANGER



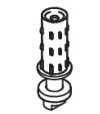
924-DC



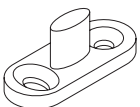
60SCT SOFT CLOSE

92 CHANNEL
9mm x 26mm

101N GUIDE



801S GUIDE



531T GUIDE

Maximum door weight	60kg
Minimum door thickness	19mm

Sets - includes track and fittings for one door

Description	Code	Price
Kit suitable for one door, kit comprises: 2m length of aluminium track, five wall mounting brackets, two door hangers, two track mounted door stops, one surface mounted guide, one sawcut guide, spanner, all screws and installation instructions.	SR60-20/1	193.00
Kit suitable for one door, kit comprises: 3m length of aluminium track, five wall mounting brackets, two door hangers, two track mounted door stops, one surface mounted guide, one sawcut guide, spanner, all screws and installation instructions.	SR60-30/1	289.00

Fittings pack

Description	Code	Price
Fittings pack with all items needed to hang one door (excluding track), pack comprises of two hangers, two door stops, one surface mounted guide, one sawcut guide, spanner, all screws and installation instructions.	SR60-1PK	111.00

Track brackets - for wall fixing track

Description	Code	Price
Single with fasteners	91Z	9.20
Five pack with fasteners	91Z/5	42.00

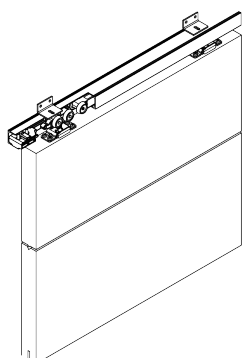
Fascia

Description	Code	Price
2m Fascia and end cap set for Single Run 60 - powder coated white	63-20PWT	131.00
3m Fascia and end cap set for Single Run 60 - powder coated white	63-30PWT	197.00
2m Fascia and end cap set for Single Run 60 - anodised	63-20CA	131.00
3m Fascia and end cap set for Single Run 60 - anodised	63-30CA	197.00

Components

Description	Code	Price
2m aluminium track - mill finish	60A-20	60.00
3m aluminium track - mill finish	60A-30	88.50
4m aluminium track - mill finish	60A-40	114.00
6m aluminium track - mill finish	60A-60	148.00
Single Run 60 Door Hanger	607	39.00
Track mounted retaining clip stop	60CS	18.50
Soft close unit	60SCT	81.00
Sawcut guide - nylon - floor mounted	101N	6.00
Spanner for 605 and 606 hanger	805-SPN	6.90
4m 92 Series threshold guide channel - aluminium - anodised finish	92-A40	176.00
6m 92 Series threshold guide channel - aluminium - anodised finish	92-A60	237.00
Stainless steel sawcut guide	531T	43.00
81 or 92 Series spring loaded guide - stainless steel	801S	16.50
Door collector kit	924-DC	24.50

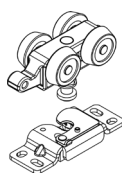
Brio Quick Run 120



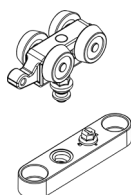
Maximum door weight	120kg
Minimum door thickness (surface mount, recessed mount door hangers)	28mm
Minimum door thickness (zero clearance door hangers)	32mm

Fitting packs

Description	Code	Price
Quick Run 120 1 Door fittings pack – surface mount door hangers Comprises two surface mount door hangers, two clip stops, one saw cut guide	QR120S-C1PK	209.00
Quick Run 120 1 Door fittings pack – recessed mount door hangers Comprises two recessed mount door hangers, two clip stops, one saw cut guide	QR120R-C1PK	232.00
Quick Run 120 1 Door fittings pack – zero clearance door hangers Comprises two zero clearance door hangers, two clip stops, one saw cut guide	QR120Z-C1PK	441.00



No. 57JNP
HANGER



No. 58JNP
HANGER

Kit sets with surface mount door hangers (to hang one door)

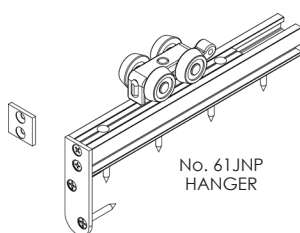
Description	Code	Price
Quick Run 120F 2m kit set with surface mount door hangers and clip stops Comprises 2m 120F track, two surface mount door hangers, two clip stops, one saw cut guide	QR120S-C20F/1	271.00
Quick Run 120F 3m kit set with surface mount door hangers and clip stops Comprises 3m 120F track, two surface mount door hangers, two clip stops, one saw cut guide	QR120S-C30F/1	299.00
Quick Run 120F 2m kit set with surface mount door hanger and soft close Comprises 2m 120F track, two surface mount door hangers, two soft close units, one saw cut guide	QR120S-S20F/1	555.00
Quick Run 120F 3m kit set with surface mount door hangers and soft close Comprises 3m 120F track, two surface mount door hangers, two soft close units, one saw cut guide	QR120S-S30F/1	580.00

Kit sets with recessed mount door hangers (to hang one door)

Description	Code	Price
Quick Run 120F 2m kit set with recessed mount door hangers and clip stops Comprises 2m 120F track, two recessed mount door hangers, two clip stops, one saw cut guide	QR120R-C20F/1	294.00
Quick Run 120F 3m kit set with recessed mount door hangers and clip stops Comprises 3m 120F track, two recessed mount door hangers, two clip stops, one saw cut guide	QR120R-C30F/1	328.00
Quick Run 120F 2m kit set with recessed mount door hangers and soft close Comprises 2m 120F track, two recessed mount door hangers, two soft close units, one saw cut guide	QR120R-S20F/1	575.00
Quick Run 120F 3m kit set with recessed mount door hangers and soft close Comprises 3m 120F track, two recessed mount door hangers, two soft close units, one saw cut guide	QR120R-S30F/1	610.00

Kit sets with zero clearance door hangers (to hang one door)

Description	Code	Price
Quick Run 120F 2m kit set with zero clearance door hangers and clip stops Comprises 2m 120F track, two zero clearance door hangers, two clip stops, one saw cut guide	QR120Z-C20F/1	505.00
Quick Run 120F 3m kit set with zero clearance door hangers and clip stops Comprises 3m 120F track, two zero clearance door hangers, two clip stops, one saw cut guide	QR120Z-C30F/1	530.00
Quick Run 120C 2m kit set with zero clearance door hangers and clip stops Comprises 2m 120C track, two zero clearance door hangers, two clip stops, one saw cut guide	QR120Z-C20C/1	520.00
Quick Run 120C 3m kit set with zero clearance door hangers and clip stops Comprises 3m 120C track, two zero clearance door hangers, two clip stops, one saw cut guide	QR120Z-C30C/1	555.00
Quick Run 120F 2m kit set with zero clearance door hangers and soft close Comprises 2m 120F track, two zero clearance door hangers, two soft close units, one saw cut guide	QR120Z-S20F/1	790.00
Quick Run 120F 3m kit set with zero clearance door hangers and soft close Comprises 3m 120F track, two zero clearance door hangers, two soft close units, one saw cut guide	QR120Z-S30F/1	820.00
Quick Run 120C 2m kit set with zero clearance door hangers and soft close Comprises 2m 120C track, two zero clearance door hangers, two soft close units, one saw cut guide	QR120Z-S20C/1	800.00
Quick Run 120C 3m kit set with zero clearance door hangers and soft close Comprises 3m 120C track, two zero clearance door hangers, two soft close units, one saw cut guide	QR120Z-S30C/1	835.00



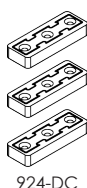
No. 61JNP
HANGER

Door hanger sets

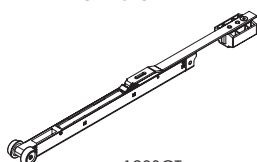
Description	Code	Price
Surface mount door hanger set (pair) with quick fix surface mount top plates	57JNP	147.00
Recessed mount door hanger set (pair) with quick fix recessed mount top plates	58JNP	175.00
Zero clearance door hanger set (pair)	61JNP	175.00

Door stops and accessories

Description	Code	Price
Track mounted door stop for Quick Run 120 / Quick Run Zero Clearance 120 door hangers	120CS	39.50
Soft close kit for Quick Run 120 / Quick Run Zero Clearance 120	120SCT	198.00
Door collector kit	924-DC	24.50

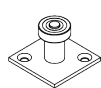


924-DC

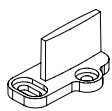


120SCT
SOFT CLOSE

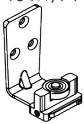
Brio Quick Run 120



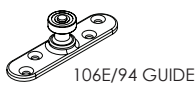
104W/94 GUIDE



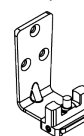
101N GUIDE



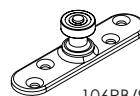
106A/94 GUIDE



106E/94 GUIDE



106AT GUIDE



106RB/94 GUIDE



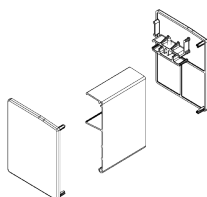
120F TRACK



120C TRACK



120E TRACK



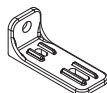
123 FASCIA



91Z BRACKET



1SS/250 BRACKET



5SS/120 BRACKET

Guides

Description	Code	Price
Sawcut guide - nylon - floor mounted	101N	6.00
Stainless steel sawcut guide	531T	43.00
Adjustable guide for multiple panels	106AT	53.50
94 Series guide - stainless steel plate and precision bearing	106E/94	67.00
94 Series guide - large stainless steel mounting plate and precision bearing	106RB/94	88.00
94 Series guide - square mounting plate	104W/94PR	38.00
94 Series guide - stainless steel angle plate with adjustable precision bearing	106A/94	69.50

Standard Track (Type F)

Description	Code	Price
2m aluminium - clear anodised finish	120F-A20	68.00
3m aluminium - clear anodised finish	120F-A30	102.00
4m aluminium - clear anodised finish	120F-A40	136.00
6m aluminium - clear anodised finish	120F-A60	198.00

Tracks suitable for recessing into the ceiling (Type C)

Description	Code	Price
2m aluminium - clear anodised finish	120C-A20	84.50
3m aluminium - clear anodised finish	120C-A30	124.00
4m aluminium - clear anodised finish	120C-A40	164.00
6m aluminium - clear anodised finish	120C-A60	237.00

Tracks for use with 123 fascia (Type E)

Description	Code	Price
2m aluminium - clear anodised finish	120E-A20	84.50
3m aluminium - clear anodised finish	120E-A30	124.00
4m aluminium - clear anodised finish	120E-A40	164.00
6m aluminium - clear anodised finish	120E-A60	237.00

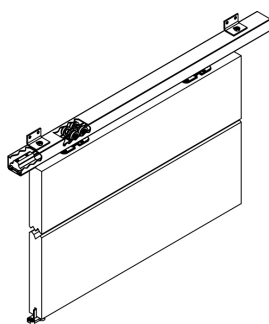
Fascia for 120E track only

Description	Code	Price
2m aluminium - clear anodised finish	123-20CA	112.00
3m aluminium - clear anodised finish	123-30CA	168.00
4m aluminium - clear anodised finish	123-40CA	218.00
6m aluminium - clear anodised finish	123-60CA	324.00

Track brackets - for wall fixing track

Description	Code	Price
Single with fasteners	91Z	9.20
Five pack with fasteners	91Z/5	42.00
Heavy duty bracket - cast stainless steel	1SS/250	53.00
Bracket for hanging two lines of track - cast stainless steel	5SS/120	96.50

Brio Single Run Exterior 120



Maximum door weight	120kg
Minimum door thickness	28mm

Sets - includes track and fittings for one door

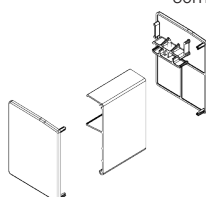
Description	Code	Price
Kit suitable for one door, kit comprises: 2m length of aluminium track, two standard door hangers, two track mounted door stops, one sawcut guide and installation instructions.	SR120SS-20/1	620.00
Kit suitable for one door, kit comprises: 3m length of aluminium track, two standard door hangers, two track mounted door stops, one sawcut guide and installation instructions.	SR120SS-30/1	700.00



120A TRACK
30mm x 41mm

Fittings pack

Description	Code	Price
Fittings pack with all items needed to hang one door (excluding track), pack comprises of two standard door hangers, two door stops, one sawcut guide and installation instructions.	SR120SS-1PK	457.00



123 FASCIA



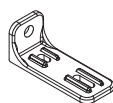
1SS/250 BRACKET

Tracks

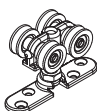
Description	Code	Price
2m aluminium - anodised finish	120A-A20	78.00
3m aluminium - anodised finish	120A-A30	119.00
4m aluminium - anodised finish	120A-A40	140.00
6m aluminium - anodised finish	120A-A60	214.00

Fascia

Description	Code	Price
2m Fascia and end cap set for 120A Track - anodised finish	123-20CA	112.00
3m Fascia and end cap set for 120A Track - anodised finish	123-30CA	168.00
4m Fascia and end cap set for 120A Track - anodised finish	123-40CA	218.00
6m Fascia and end cap set for 120A Track - anodised finish	123-60CA	324.00



5SS/120 BRACKET



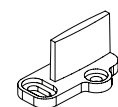
57SS/EN HANGER

Track brackets - for wall fixing track

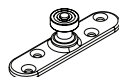
Description	Code	Price
Heavy duty bracket - cast stainless steel	1SS/250	53.00
Bracket for hanging two lines of track - cast stainless steel	5SS/120	96.50

Door hangers (always use two per door)

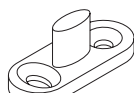
Description	Code	Price
Type 57 - surface mounted pressed top plate with nylon wheels and stainless steel bearings	57SS/EN	212.00



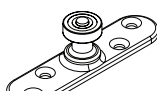
101N GUIDE



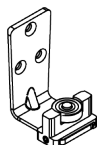
106E/94 GUIDE



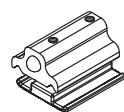
531T GUIDE



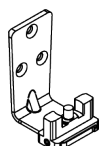
106RB/94 GUIDE



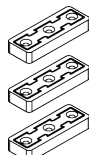
106A/94 GUIDE



120DS DOOR STOP



106AT GUIDE



924-DC

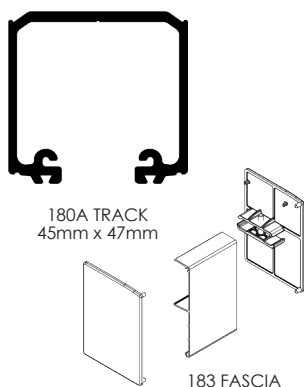
Guides

Description	Code	Price
Sawcut guide - nylon - floor mounted	101N	6.00
Stainless steel sawcut guide	531T	43.00
Adjustable guide for multiple panels	106AT	53.50
94 Series guide - stainless steel plate and precision bearing	106E/94	67.00
94 Series guide - large stainless steel mounting plate and precision bearing	106RB/94	88.00
94 Series guide - stainless steel angle plate with adjustable precision bearing	106A/94	69.50

Door stops and accessories

Description	Code	Price
Track mounted door stop for Single Run 80 or Single Run 120	120DS	55.00
Door collector kit	924-DC	24.50

Brio Single Run 180



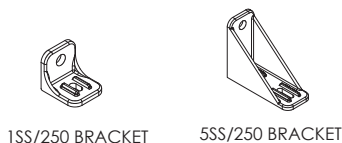
Maximum door weight	180kg
Minimum door thickness	35mm

Tracks

Description	Code	Price
2m aluminium - anodised finish	180A-A20	168.00
2.5m aluminium - anodised finish	180A-A25	223.00
3m aluminium - anodised finish	180A-A30	257.00
4m aluminium - anodised finish	180A-A40	339.00
5m aluminium - anodised finish	180A-A50	418.00
6m aluminium - anodised finish	180A-A60	505.00

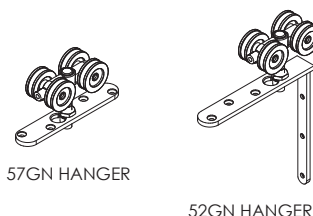
Fascia

Description	Code	Price
2m Fascia and end cap set for 180A Track - anodised finish	183-20CA	185.00
3m Fascia and end cap set for 180A Track - anodised finish	183-30CA	253.00
4m Fascia and end cap set for 180A Track - anodised finish	183-40CA	308.00
6m Fascia and end cap set for 180A Track - anodised finish	183-60CA	425.00



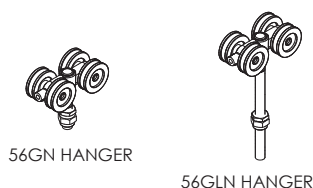
Track brackets - for wall fixing track

Description	Code	Price
Heavy duty bracket - cast stainless steel	1SS/250	53.00
Heavy duty bracket for hanging two lines of track - cast stainless steel	5SS/250	165.00



Door hangers - for timber doors (always use two per door)

Description	Code	Price
Type 52 - corner fixing plate with chrome steel bearings	52GN	270.00
Type 52 - corner fixing plate with stainless steel bearings	52SS/GN	368.00
Type 57 - top fixing plate with chrome steel bearings	57GN	240.00
Type 57 - top fixing plate with stainless steel bearings	57SS/GN	399.00



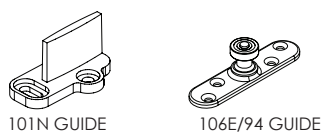
Door hangers - for metal doors (always use two per door)

Description	Code	Price
Type 56 - short bolt fix	56GN	172.00
Type 56L - long bolt fix	56GLN	188.00



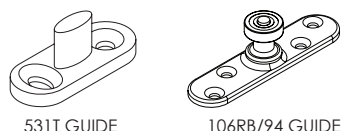
Door stop

Description	Code	Price
Track mounted door stop	180DS	66.50



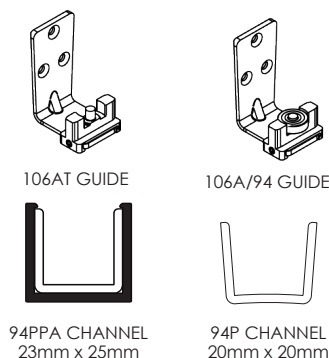
Guides

Description	Code	Price
Stainless steel sawcut guide	531T	43.00
Adjustable guide for multiple panels	106AT	53.50
94 Series guide - stainless steel plate and precision bearing	106E/94	67.00
94 Series guide - large stainless steel mounting plate and precision bearing	106RB/94	88.00
94 Series guide - stainless steel angle plate with adjustable precision bearing	106A/94	69.50

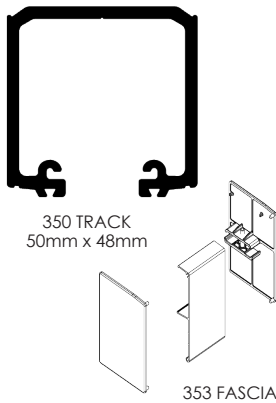


Guide channels

Description	Code	Price
2m 94 Series polypropylene channel - black	94P-20	25.00
2.5m 94 Series polypropylene channel - black	94P-25	30.00
3m 94 Series polypropylene channel - black	94P-30	39.00
4m 94 Series polypropylene channel - black	94P-40	47.00
5m 94 Series polypropylene channel - black	94P-50	55.50
6m 94 Series polypropylene channel - black	94P-60	70.00
2m 94 Series polypropylene channel with aluminium support - anodised finish	94PPA-A20	81.00
2.5m 94 Series polypropylene channel with aluminium support - anodised finish	94PPA-A25	103.00
3m 94 Series polypropylene channel with aluminium support - anodised finish	94PPA-A30	121.00
4m 94 Series polypropylene channel with aluminium support - anodised finish	94PPA-A40	148.00
5m 94 Series polypropylene channel with aluminium support - anodised finish	94PPA-A50	188.00
6m 94 Series polypropylene channel with aluminium support - anodised finish	94PPA-A60	220.00



Brio Single Run 350



350 TRACK
50mm x 48mm

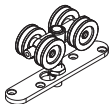
353 FASCIA



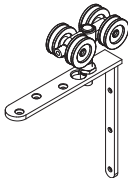
1SS/250 BRACKET



5SS/250 BRACKET



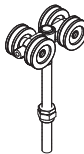
57HN HANGER



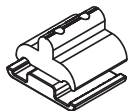
52HN HANGER



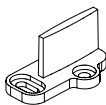
56HN HANGER



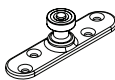
56HLN HANGER



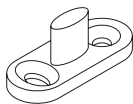
180DS DOOR STOP



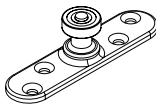
101N GUIDE



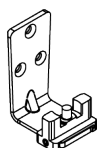
106E/94 GUIDE



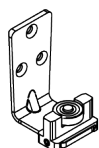
531T GUIDE



106RB/94 GUIDE



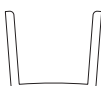
106AT GUIDE



106A/94 GUIDE



94PPA CHANNEL
23mm x 25mm



94P CHANNEL
20mm x 20mm

Maximum door weight	350kg
Minimum door thickness	35mm

Tracks

Description	Code	Price
2m aluminium - anodised finish	350-A20	223.00
2.5m aluminium - anodised finish	350-A25	281.00
3m aluminium - anodised finish	350-A30	339.00
4m aluminium - anodised finish	350-A40	436.00
5m aluminium - anodised finish	350-A50	540.00
6m aluminium - anodised finish	350-A60	655.00

Fascia

Description	Code	Price
2m Fascia and end cap set for 350 Track- anodised finish	353-20CA	191.00
3m Fascia and end cap set for 350 Track- anodised finish	353-30CA	261.00
4m Fascia and end cap set for 350 Track- anodised finish	353-40CA	322.00
6m Fascia and end cap set for 350 Track - anodised finish	353-60CA	447.00

Track Brackets - for wall fixing track

Description	Code	Price
Heavy duty bracket - cast stainless steel	1SS/250	53.00
Heavy duty bracket for hanging two lines of track - cast stainless steel	5SS/250	165.00

Door hangers - for timber doors (always use two per door)

Description	Code	Price
Type 52 - corner fixing plate with chrome steel bearings	52HN	294.00
Type 52 - corner fixing plate with stainless steel bearings	52SS/HN	437.00
Type 57 - top fixing plate with chrome steel bearings	57HN	264.00
Type 57 - top fixing plate with stainless steel bearings	57SS/HN	436.00

Door hangers - for metal doors (always use two per door)

Description	Code	Price
Type 56 - short bolt fix	56HN	193.00
Type 56L - long bolt fix	56HLN	209.00

Door stop

Description	Code	Price
Track mounted door stop	180DS	66.50

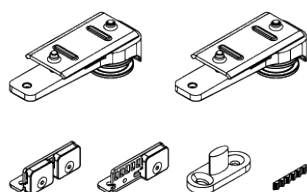
Guides

Description	Code	Price
Stainless steel sawcut guide	531T	43.00
Adjustable guide for multiple panels	106AT	53.50
94 Series guide - stainless steel plate and precision bearing	106E/94	67.00
94 Series guide - large stainless steel mounting plate and precision bearing	106RB/94	88.00
94 Series guide - stainless steel angle plate with adjustable precision bearing	106A/94	69.50

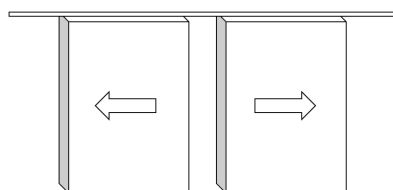
Guide channels

Description	Code	Price
2m 94 Series polypropylene channel - black	94P-20	25.00
2.5m 94 Series polypropylene channel - black	94P-25	30.00
3m 94 Series polypropylene channel - black	94P-30	39.00
4m 94 Series polypropylene channel - black	94P-40	47.00
5m 94 Series polypropylene channel - black	94P-50	55.50
6m 94 Series polypropylene channel - black	94P-60	70.00
2m 94 Series polypropylene channel with aluminium support - anodised finish	94PPA-A20	81.00
2.5m 94 Series polypropylene channel with aluminium support - anodised finish	94PPA-A25	103.00
3m 94 Series polypropylene channel with aluminium support - anodised finish	94PPA-A30	121.00
4m 94 Series polypropylene channel with aluminium support - anodised finish	94PPA-A40	148.00
5m 94 Series polypropylene channel with aluminium support - anodised finish	94PPA-A50	188.00
6m 94 Series polypropylene channel with aluminium support - anodised finish	94PPA-A60	220.00

Brio Simultaneous



Simultaneous
2 Panel Kit

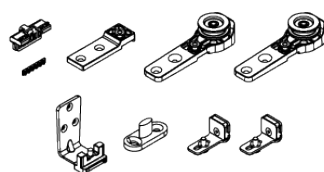


Compatible with the following systems:	Maximum door weight:
Single Run Exterior 120	100kg
Single Run 180	100kg
Single Run 350	100kg

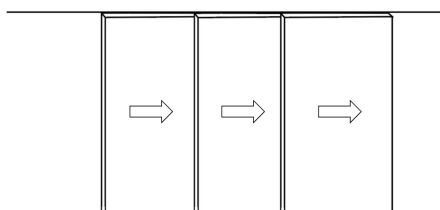
Fittings pack

Description	Code	Price
Simultaneous action kit for two panels	SIM/2	550.00

Brio Telescopic



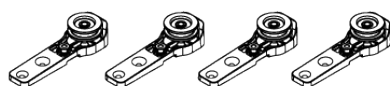
Telescopic
2 Panel Kit



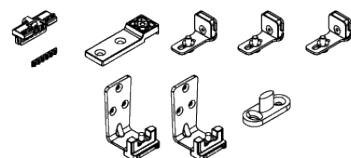
Compatible with the following systems:	Maximum door weight:
Quick Run 120	2 Door: 120kg, 3 Door: 100kg
Single Run Exterior 120	2 Door: 120kg, 3 Door: 100kg
Single Run 180	2 Door: 120kg, 3 Door: 100kg
Single Run 350	2 Door: 120kg, 3 Door: 100kg

Fittings pack

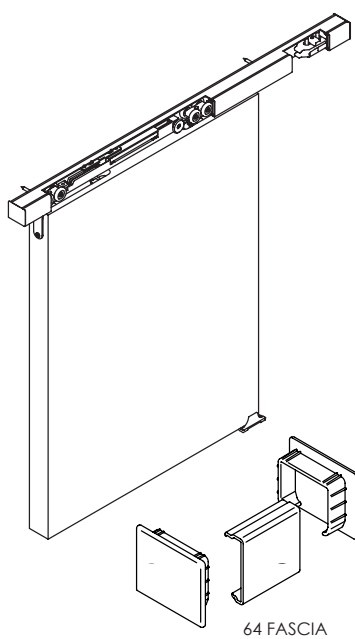
Description	Code	Price
Telescopic kit for two panels	TEL/2	261.00
Telescopic kit for three panels	TEL/3	444.00



Telescopic
3 Panel Kit



Brio Zero Clearance 60



Maximum door weight	60kg
Minimum door thickness	28mm

Sets – include track and fittings for one door

Description	Code	Price
Kit suitable for one door, kit comprises: 2m length of aluminium track, two door hangers, two track mounted door stops, one sawcut guide and installation instructions.	ZC60-20/1	215.00
Kit suitable for one door, kit comprises: 3m length of aluminium track, two door hangers, two track mounted door stops, one sawcut guide and installation instructions.	ZC60-30/1	241.00

Fittings pack

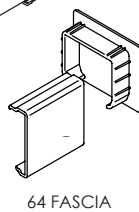
Description	Code	Price
Fittings pack with all items needed to hang one door (excluding track), pack comprises of two door hangers, two door stops, one sawcut guide and installation instructions.	ZC60-1PK	162.00

Tracks

Description	Code	Price
2m aluminium – mill finish	60A-20	60.00
3m aluminium – mill finish	60A-30	88.50
4m aluminium – mill finish	60A-40	114.00
6m aluminium – mill finish	60A-60	148.00



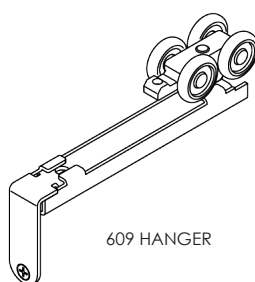
60A TRACK
31mm x 30mm



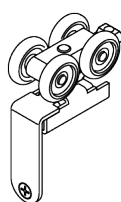
64 FASCIA

Fascia

Description	Code	Price
2m Fascia and end cap set for Zero Clearance 60 – powder coated white	64-20PWT	131.00
3m Fascia and end cap set for Zero Clearance 60 – powder coated white	64-30PWT	197.00
2m Fascia and end cap set for Zero Clearance 60 – anodised	64-20CA	131.00
3m Fascia and end cap set for Zero Clearance 60 – anodised	64-30CA	197.00



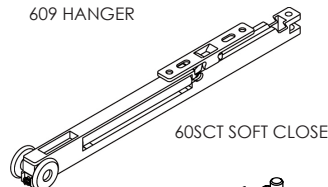
609 HANGER



610 HANGER

Door hangers - for timber doors (always use two per door)

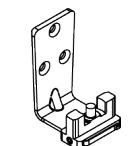
Description	Code	Price
Zero Clearance 60 hanger for use with 60CS clip stop	609	61.00
Zero Clearance 60 hanger for use with 60SCT soft close	610	61.00



60SCT SOFT CLOSE

Door stops and accessories

Description	Code	Price
Track mounted clip stop	60CS	18.50
Soft close unit	60SCT	81.00



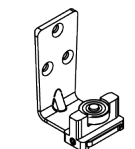
106AT GUIDE



60CS CLIP STOP



106E/94 GUIDE



106A/94 GUIDE



531T GUIDE



101N GUIDE

Guides

Description	Code	Price
Sawcut guide – nylon – floor mounted	101N	6.00
Adjustable guide for multiple panels	106AT	53.50
94 Series guide – stainless steel plate and precision bearing	106E/94	67.00
94 Series guide – large stainless steel mounting plate and precision bearing	106RB/94	88.00
94 Series guide – stainless steel angle plate with adjustable precision bearing	106A/94	69.50

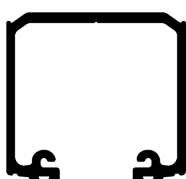
Guide channels

Description	Code	Price
2m 94 Series polypropylene channel with aluminium support – anodised finish	94PPA-A20	81.00
2.5m 94 Series polypropylene channel with aluminium support – anodised finish	94PPA-A25	103.00
3m 94 Series polypropylene channel with aluminium support – anodised finish	94PPA-A30	121.00
4m 94 Series polypropylene channel with aluminium support – anodised finish	94PPA-A40	148.00
5m 94 Series polypropylene channel with aluminium support – anodised finish	94PPA-A50	188.00
6m 94 Series polypropylene channel with aluminium support – anodised finish	94PPA-A60	220.00

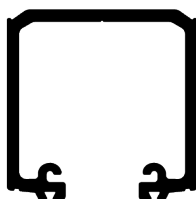


94PPA CHANNEL
23mm x 25mm

Brio Zero Clearance 180 and 350



180A TRACK
45mm x 47mm



350 TRACK
50mm x 48mm

180

Maximum door weight	180kg
Minimum door thickness	40mm

350

Maximum door weight	350kg
Minimum door thickness	40mm

Tracks - aluminium anodised finish

Description	Code	Price
2m aluminium - anodised finish	180A-A20	168.00
2.5m aluminium - anodised finish	180A-A25	223.00
3m aluminium - anodised finish	180A-A30	257.00
4m aluminium - anodised finish	180A-A40	339.00
5m aluminium - anodised finish	180A-A50	418.00
6m aluminium - anodised finish	180A-A60	505.00

Code	Price
350-A20	223.00
350-A25	281.00
350-A30	339.00
350-A40	436.00
350-A50	540.00
350-A60	655.00

Door hangers (always use two per door)

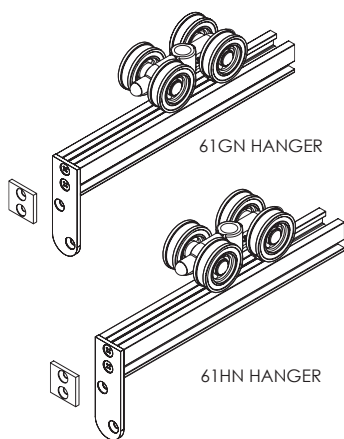
Description	Code	Price
Zero Clearance hanger	61GN	401.00

Code	Price
61HN	423.00

Door stops

Description	Code	Price
Track mounted door stop	180DS	66.50

Code	Price
180DS	66.50



61GN HANGER

61HN HANGER

Guides

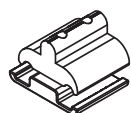
Description	Code	Price
Stainless steel sawcut guide	531T	43.00
Adjustable guide for multiple panels	106AT	53.50
94 Series guide - stainless steel plate and precision bearing	106E/94	67.00
94 Series guide - large stainless steel mounting plate and precision bearing	106RB/94	88.00
94 Series guide - stainless steel angle plate with adjustable precision bearing	106A/94	69.50

Guide channels

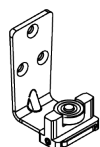
Description	Code	Price
2m 94 Series polypropylene channel - black	94P-20	25.00
2.5m 94 Series polypropylene channel - black	94P-25	30.00
3m 94 Series polypropylene channel - black	94P-30	39.00
4m 94 Series polypropylene channel - black	94P-40	47.00
5m 94 Series polypropylene channel - black	94P-50	55.50
6m 94 Series polypropylene channel - black	94P-60	70.00
2m 94 Series polypropylene channel with aluminium support - anodised finish	94PPA-A20	81.00
2.5m 94 Series polypropylene channel with aluminium support - anodised finish	94PPA-A25	103.00
3m 94 Series polypropylene channel with aluminium support - anodised finish	94PPA-A30	121.00
4m 94 Series polypropylene channel with aluminium support - anodised finish	94PPA-A40	148.00
5m 94 Series polypropylene channel with aluminium support - anodised finish	94PPA-A50	188.00
6m 94 Series polypropylene channel with aluminium support - anodised finish	94PPA-A60	220.00



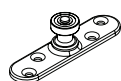
531T GUIDE



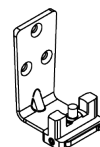
180DS DOOR STOP



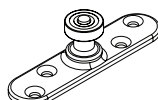
106A/94 GUIDE



106E/94 GUIDE



106AT GUIDE



106RB/94 GUIDE

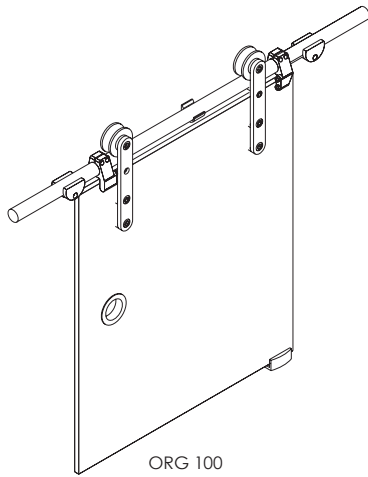


94PPA CHANNEL
23mm x 25mm



94P CHANNEL
20mm x 20mm

Brio Open Round Rail Glass 100



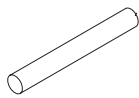
Maximum door weight	100kg
Maximum door height	3m
Glass thickness	8, 10 or 12mm

Tracks

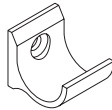
Description	Code	Price
2m Round rail with end caps - stainless steel	100OR-20	322.00
2.5m Round rail with end caps - stainless steel	100OR-25	402.00
3m Round rail with end caps - stainless steel	100OR-30	486.00
4m Round rail with end caps - stainless steel	100OR-40	645.00
2m Round rail with end caps - PVD black	100OR-20PR	436.00
2.5m Round rail with end caps - PVD black	100OR-25PR	545.00
3m Round rail with end caps - PVD black	100OR-30PR	655.00

Additional wall mounting brackets

Description	Code	Price
None required for 2m track, one for 2.5m track, two for 3m track and four for 4m track		
Support bracket for Open Round Rail Glass 100 system - stainless steel	100-RB	42.00
Support bracket for Open Round Rail Glass 100 system - PVD black	100-RBPR	60.50



100OR RAIL

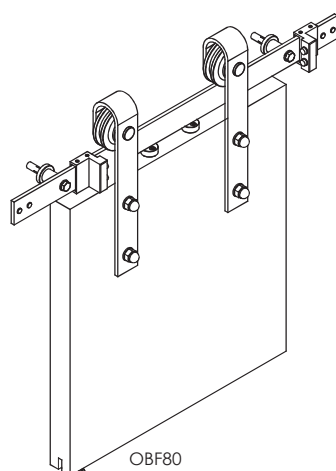


100-RB BRACKET

Fittings packs

Description	Code	Price
Pack includes two door hangers, two doorstops, one guide, brackets and fixings		
Open Round Rail Glass 100 - fittings pack - stainless steel	ORG100	915.00
Open Round Rail Glass 100 - fittings pack - PVD black	ORG100PR	1,240.00

Brio Open Bar Rail Timber 80



Maximum door weight	80kg
Maximum door width	1.1m
Door thickness	35-44mm

Sets - includes track and fittings for one door

Description	Code	Price
Open Bar Rail 80 kit - 2m powder coated black	OBF80-20PB	444.00
Open Bar Rail 80 kit - 2.5m powder coated black	OBF80-25PB	555.00
Open Bar Rail 80 kit - 2m stainless steel	OBF80-20	655.00
Open Bar Rail 80 kit - 2.5m stainless steel	OBF80-25	815.00
Open Bar Rail 80 - 2m antique bronze	OBF80-20ABZ	655.00
Open Bar Rail 80 - 2.5m antique bronze	OBF80-25ABZ	815.00

Rail joiners

Description	Code	Price
Open Bar Rail 80 joining bracket - powder coated black	80B-JBPB	17.00
Open Bar Rail 80 joining bracket - stainless steel	80B-JB	25.00
Open Bar Rail 80 joining bracket - antique bronze	80B-JBABZ	25.00

Wall bracket spacer discs - use five for 2m rail, six for 2.5m rail

Description	Code	Price
Open Bar Rail 80 14mm spacer disc (use behind wall mounting brackets) - powder coated black	OBF80-PACKERPBK	6.60
Open Bar Rail 80 14mm spacer disc (use behind wall mounting brackets) - stainless steel	OBF80-PACKERSSS	10.50
Open Bar Rail 80 14mm spacer disc (use behind wall mounting brackets) - antique bronze	OBF80-PACKERABZ	10.50

Guides

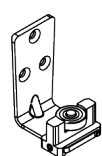
Description	Code	Price
Stainless steel sawcut guide - stainless steel	531T	43.00
Stainless steel sawcut guide - PVD black finish	531TPR	57.00
Adjustable guide for multiple panels	106AT	53.50
94 Series guide - stainless steel plate and precision bearing	106E/94	67.00
94 Series guide - large stainless steel mounting plate and precision bearing	106RB/94	88.00
94 Series guide - stainless steel angle plate with adjustable precision bearing	106A/94	69.50

Guide channels

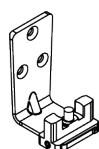
Description	Code	Price
2m 94 Series polypropylene channel - black	94P-20	25.00
2.5m 94 Series polypropylene channel - black	94P-25	30.00
3m 94 Series polypropylene channel - black	94P-30	39.00
4m 94 Series polypropylene channel - black	94P-40	47.00
5m 94 Series polypropylene channel - black	94P-50	55.50
6m 94 Series polypropylene channel - black	94P-60	70.00
2m 94 Series polypropylene channel with aluminium support - anodised finish	94PPA-A20	81.00
2.5m 94 Series polypropylene channel with aluminium support - anodised finish	94PPA-A25	103.00
3m 94 Series polypropylene channel with aluminium support - anodised finish	94PPA-A30	121.00
4m 94 Series polypropylene channel with aluminium support - anodised finish	94PPA-A40	148.00
5m 94 Series polypropylene channel with aluminium support - anodised finish	94PPA-A50	188.00
6m 94 Series polypropylene channel with aluminium support - anodised finish	94PPA-A60	220.00

Accessories

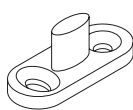
Description	Code	Price
Soft Close Kit - includes two soft close units for soft-close in both opening and closing directions	OBF80-SCT	210.00



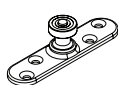
106A/94 GUIDE



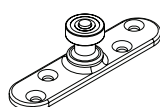
106AT GUIDE



531T GUIDE



106E/94 GUIDE



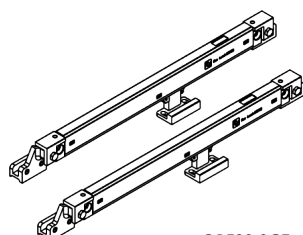
106RB/94 GUIDE



94PPA CHANNEL
23mm x 25mm

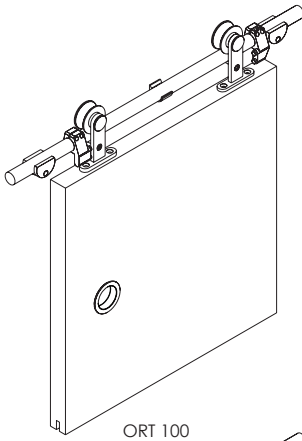


94P CHANNEL
20mm x 20mm

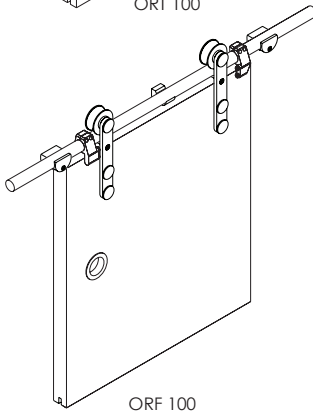


OBF80-SCT
SOFT CLOSE KIT

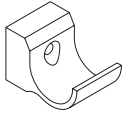
Brio Open Round Rail Timber 100



ORT 100



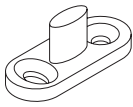
ORF 100



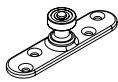
100F-RB BRACKET



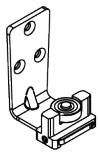
100-RB BRACKET



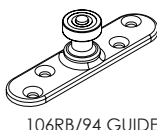
531T GUIDE



106E/94 GUIDE



106A/94 GUIDE



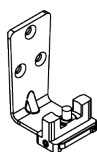
106RB/94 GUIDE



94PPA CHANNEL
23mm x 25mm



94P CHANNEL
20mm x 20mm



106AT GUIDE

Maximum door weight	100kg
Minimum door thickness	35 - 40mm

Tracks

Description	Code	Price
2m Round rail with end caps - stainless steel	100OR-20	322.00
2.5m Round rail with end caps - stainless steel	100OR-25	402.00
3m Round rail with end caps - stainless steel	100OR-30	486.00
4m Round rail with end caps - stainless steel	100OR-40	645.00
2m Round rail with end caps - PVD black	100OR-20PR	436.00
2.5m Round rail with end caps - PVD black	100OR-25PR	545.00
3m Round rail with end caps - PVD black	100OR-30PR	655.00

Fittings packs

Description	Code	Price
Pack includes two door hangers, two doorstops, one guide, one flush pull, brackets and fixings		
Open Round Rail Timber 100 - Top Fix - fittings pack - stainless steel	ORT100	745.00
Open Round Rail Timber 100 - Top Fix - fittings pack - PVD black	ORT100PR	1,000.00
Open Round Rail Timber 100 - Face Fix - fittings pack - stainless steel	ORF100	820.00
Open Round Rail Timber 100 - Face Fix - fittings pack - PVD black	ORF100PR	1,110.00

Additional wall mounting brackets

Description	Code	Price
None required for 2m track, one for 2.5m track, two for 3m track and four for 4m track		
Support bracket for round rail (top fix system) - stainless steel	100-RB	42.00
Support bracket for round rail (top fix system) - PVD black	100-RBPR	60.50
Support bracket for round rail (face fix system) - stainless steel	100F-RB	55.00
Support bracket for round rail (face fix system) - PVD black	100F-RBPR	73.50

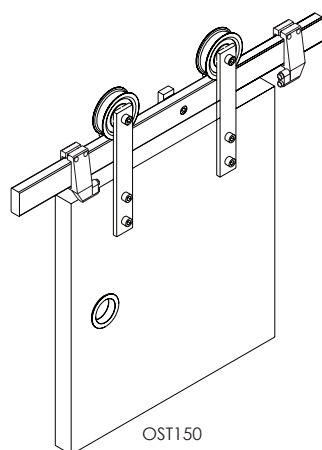
Guides

Description	Code	Price
Stainless steel sawcut guide	531T	43.00
Stainless steel sawcut guide - PVD black finish	531TPR	57.00
Adjustable guide for multiple panels	106AT	53.50
94 Series guide - stainless steel plate and precision bearing	106E/94	67.00
94 Series guide - large stainless steel mounting plate and precision bearing	106RB/94	88.00
94 Series guide - stainless steel angle plate with adjustable precision bearing	106A/94	69.50

Guide channels

Description	Code	Price
2m 94 Series polypropylene channel - black	94P-20	25.00
2.5m 94 Series polypropylene channel - black	94P-25	30.00
3m 94 Series polypropylene channel - black	94P-30	39.00
4m 94 Series polypropylene channel - black	94P-40	47.00
5m 94 Series polypropylene channel - black	94P-50	55.50
6m 94 Series polypropylene channel - black	94P-60	70.00
2m 94 Series polypropylene channel with aluminium support - anodised finish	94PPA-A20	81.00
2.5m 94 Series polypropylene channel with aluminium support - anodised finish	94PPA-A25	103.00
3m 94 Series polypropylene channel with aluminium support - anodised finish	94PPA-A30	121.00
4m 94 Series polypropylene channel with aluminium support - anodised finish	94PPA-A40	148.00
5m 94 Series polypropylene channel with aluminium support - anodised finish	94PPA-A50	188.00
6m 94 Series polypropylene channel with aluminium support - anodised finish	94PPA-A60	220.00

Brio Open Square Rail Timber 150



Maximum door weight	150kg
Minimum door thickness	35-44mm

Tracks

Description	Code	Price
2m Square rail with end caps - stainless steel	150SR-20	965.00
2.5m Square rail with end caps - stainless steel	150SR-25	1,070.00
3m Square rail with end caps - stainless steel	150SR-30	1,340.00
4m Square rail with end caps - stainless steel	150SR-40	1,720.00
2m Square rail with end caps - PVD black	150SR-20PR	1,370.00
2.5m Square rail with end caps - PVD black	150SR-25PR	1,730.00
3m Square rail with end caps - PVD black	150SR-30PR	1,820.00

Fittings packs

Description	Code	Price
Pack includes two door hangers, two doorstops, one guide, one flush pull, brackets and fixings		
Open Square Rail 150 fittings pack - stainless steel	OST150	1,280.00
Open Square Rail 150 fittings pack - PVD black	OST150PR	1,740.00

Additional wall mounting brackets

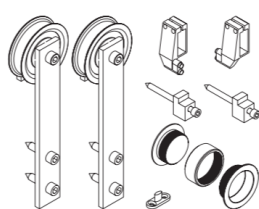
Description	Code	Price
None required for 2m track, one for 2.5m track, two for 3m track and four for 4m track		
Wall fixing bracket for square rail - stainless steel	150-SB	120.00
Wall fixing bracket for square rail - PVD black	150-SBPR	160.00

Guides

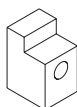
Description	Code	Price
Stainless steel sawcut guide - stainless steel	531T	43.00
Stainless steel sawcut guide - PVD black	531TPR	57.00
Adjustable guide for multiple panels	106AT	53.50
94 Series guide - stainless steel plate and precision bearing	106E/94	67.00
94 Series guide - large stainless steel mounting plate and precision bearing	106RB/94	88.00
94 Series guide - stainless steel angle plate with adjustable precision bearing	106A/94	69.50

Guide channels

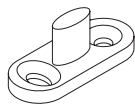
Description	Code	Price
2m 94 Series polypropylene channel - black	94P-20	25.00
2.5m 94 Series polypropylene channel - black	94P-25	30.00
3m 94 Series polypropylene channel - black	94P-30	39.00
4m 94 Series polypropylene channel - black	94P-40	47.00
5m 94 Series polypropylene channel - black	94P-50	55.50
6m 94 Series polypropylene channel - black	94P-60	70.00
2m 94 Series polypropylene channel with aluminium support - anodised finish	94PPA-A20	81.00
2.5m 94 Series polypropylene channel with aluminium support - anodised finish	94PPA-A25	103.00
3m 94 Series polypropylene channel with aluminium support - anodised finish	94PPA-A30	121.00
4m 94 Series polypropylene channel with aluminium support - anodised finish	94PPA-A40	148.00
5m 94 Series polypropylene channel with aluminium support - anodised finish	94PPA-A50	188.00
6m 94 Series polypropylene channel with aluminium support - anodised finish	94PPA-A60	220.00



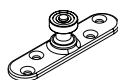
OST150 FITTINGS PACK



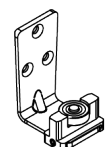
150-SB BRACKET



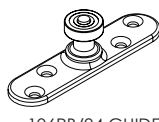
531T GUIDE



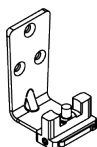
106E/94 GUIDE



106A/94 GUIDE

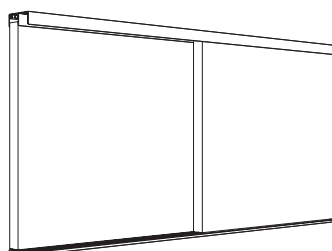


106RB/94 GUIDE

94PPA CHANNEL
23mm x 25mm94P CHANNEL
20mm x 20mm

106AT GUIDE

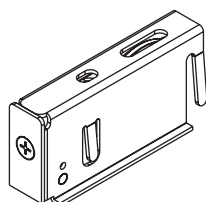
Brio Wardrobe Roll 50



Maximum door weight	50kg
Door thickness	30-40mm

Kit sets

Description	Finishes			Price
	Black Anodised	Clear Anodised	White	
1.2m Double kit suitable for two doors	WR50-12/2BA	WR50-12/2CA	WR50-12/2PWT	177.00
				239.00
1.5m Double kit suitable for two doors	WR50-15/2BA	WR50-15/2CA	WR50-15/2PWT	190.00
				257.00
1.8m Double kit suitable for two doors	WR50-18/2BA	WR50-18/2CA	WR50-18/2PWT	210.00
				284.00
2.4m Double kit suitable for three doors	WR50-24/3BA	WR50-24/3CA	WR50-24/3PWT	249.00
				336.00



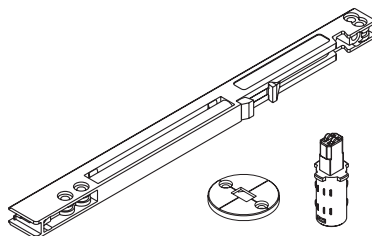
50WR ROLLER



50G GUIDE DISC



53C SILL COVER CLIP



50SCL SOFT CLOSE KIT

Kit sets - including soft close

Description	Finishes			Price
	Black Anodised	Clear Anodised	White	
1.2m Double kit suitable for two doors	WR50L-12/2BA	WR50L-12/2CA	WR50L-12/2PWT	280.00
				378.00
1.5m Double kit suitable for two doors	WR50L-15/2BA	WR50L-15/2CA	WR50L-15/2PWT	294.00
				397.00
1.8m Double kit suitable for two doors	WR50L-18/2BA	WR50L-18/2CA	WR50L-18/2PWT	311.00
				420.00
2.4m Double kit suitable for three doors	WR50L-24/3BA	WR50L-24/3CA	WR50L-24/3PWT	401.00
				541.00

Soft close kits include 1x soft close unit per door

Fittings pack

Description	Code	Price
Fittings pack containing two adjustable rollers, two guides to hang one door and eight sill cover clips	WR50-1PK	40.50

Components and accessories

Description	Code	Price
Guide Disc	50G	2.40
Wardrobe Roll 50 Bottom Roller	50WR	16.50
Sill Cover Clip - 8 pack	53C/8	26.50
Soft close kit (for one door, soft closing in one direction) up to 20kg door	50SCL	53.50

Extrusions



55 HEAD EXTRUSION



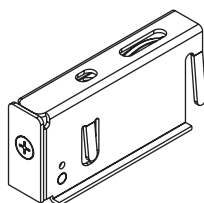
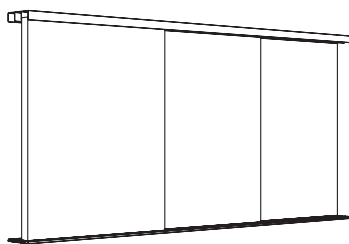
53 SILL EXTRUSION



56 SILL COVER

Description	Finishes			Price
	Black Anodised	Clear Anodised	White	
3.8m Double sill extrusion		53-A38	53-38PWT	101.00
3.8m Double head extrusion		55-A38	55-38PWT	148.00
3.8m Sill cover extrusion		56-A38	56-38PWT	21.00
5m Double sill extrusion	53-BA50	53-A50	53-50PWT	133.00
				180.00
5m Double head extrusion	55-BA50	55-A50	55-50PWT	195.00
				263.00
5m Sill cover extrusion	56-BA50	56-A50	56-50PWT	28.00
				38.00

Brio Wardrobe Roll Trio 50



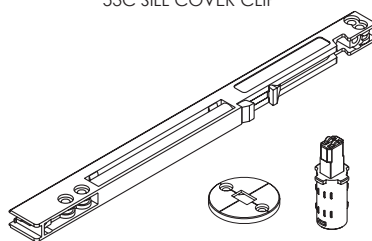
50WR ROLLER



50G GUIDE



53C SILL COVER CLIP



50SCL SOFT CLOSE KIT



58 HEAD EXTRUSION



57 SILL EXTRUSION



56 SILL COVER

Maximum door weight	50kg
Door thickness	30-40mm

Kit sets

Description	Finishes			Price
	Black Anodised	Clear Anodised	White	
1.8m Trio kit suitable for three doors	WT50-18/3BA	WT50-18/3CA	WT50-18/3PWT	385.00
				520.00
2.1m Trio kit suitable for three doors	WT50-21/3BA	WT50-21/3CA	WT50-21/3PWT	411.00
				555.00
2.4m Trio kit suitable for three doors	WT50-24/3BA	WT50-24/3CA	WT50-24/3PWT	438.00
				591.00
2.7m Trio kit suitable for three doors	WT50-27/3BA	WT50-27/3CA	WT50-27/3PWT	468.00
				632.00

Kit sets - including soft close

Description	Finishes			Price
	Black Anodised	Clear Anodised	White	
1.8m Trio kit with soft close suitable for three doors	WT50L-18/3BA	WT50L-18/3CA	WT50L-18/3PWT	545.00
				736.00
2.1m Trio kit with soft close suitable for three doors	WT50L-21/3BA	WT50L-21/3CA	WT50L-21/3PWT	570.00
				770.00
2.4m Trio kit with soft close suitable for three doors	WT50L-24/3BA	WT50L-24/3CA	WT50L-24/3PWT	600.00
				810.00
2.7m Trio kit with soft close suitable for three doors	WT50L-27/3BA	WT50L-27/3CA	WT50L-27/3PWT	625.00
				844.00

Soft close kits include 1x soft close unit per door

Fittings pack

Description	Code	Price
Fittings pack containing two adjustable rollers, two guides to hang one door and eight sill cover clips	WR50-1PK	40.50

Components and accessories

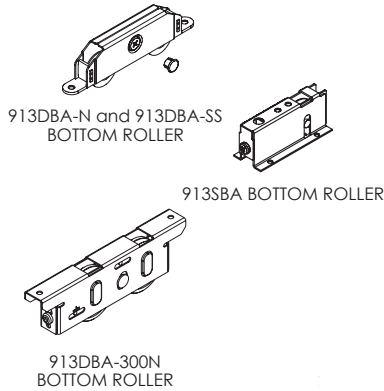
Description	Code	Price
Guide Disc	50G	2.40
Wardrobe Roll 50 Trio roller	50WR	16.50
Sill cover clip - 8 pack	53C/8	26.50
Soft close kit (for one door, soft closing in one direction) up to 20kg door	50SCL	53.50

Extrusions

Description	Finishes			Price
	Black Anodised	Clear Anodised	White	
5m Triple sill extrusion	57-BA50	57-A50	57-50PWT	283.00
				382.00
5m Triple head extrusion	58-BA50	58-A50	58-50PWT	295.00
				398.00
5m Sill cover extrusion	56-BA50	56-A50	56-50PWT	28.00
				38.00

Brio Timberoll

Maximum door weight	100kg / 170kg / 200kg / 300kg
Minimum door thickness	40mm



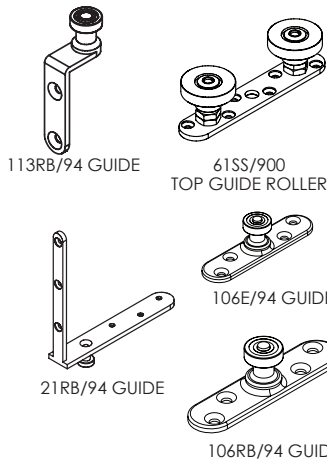
Rollers

Description	Code	Price
Timberoll 100 double wheel - nylon self levelling roller with vertical adjustment	913DBA-N	77.00
Timberoll 170 single wheel - stainless steel roller with vertical adjustment	913SBA	82.00
Timberoll 200 double wheel - stainless steel self levelling double roller with vertical adjustment	913DBA-SS	136.00
Timberoll 300N double wheel - nylon self levelling double roller with vertical adjustment	913DBA-300N	211.00

Surface mounted rails - suitable for Timberoll 100, 170, 200 and 300N rollers

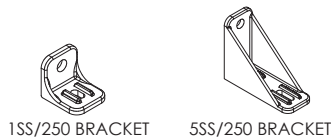
Description	Code	Price
2m 913 Series rail - aluminium - anodised - drilled and countersunk	913A-A20	60.50
3m 913 Series rail - aluminium - anodised - drilled and countersunk	913A-A30	91.00
4m 913 Series rail - aluminium - anodised - drilled and countersunk	913A-A40	115.00
6m 913 Series rail - aluminium - anodised - drilled and countersunk	913A-A60	173.00
2m 913 Series rail - brass - drilled and countersunk	913B-20	190.00
3m 913 Series rail - brass - drilled and countersunk	913B-30	251.00
4m 913 Series rail - brass - drilled and countersunk	913B-40	371.00
6m 913 Series rail - brass - drilled and countersunk	913B-60	487.00

Guides



Description	Code	Price
900 Series anti-rattle adjustable nylon roller with stainless steel top plate	61SS/900	240.00
94 Series guide - stainless steel plate and precision bearing - small plate	106E/94	67.00
94 Series guide - stainless steel plate and precision bearing - large plate	106RB/94	88.00
Corner plate fixing - stainless steel bearing - small cast stainless steel plate	113RB/94	65.50
Corner plate fixing - stainless steel bearing - large cast stainless steel plate	21RB/94	127.00

Wall mounting brackets for 900 Series channel



Description	Code	Price
Wall fixed - single line - cast stainless steel	1SS/250	53.00
Wall fixed - double line - cast stainless steel	5SS/250	165.00

Brio Guide channels

For straight sliding doors



92 CHANNEL
9mm x 26mm



94 CHANNEL
20mm x 21mm



94P CHANNEL
20mm x 20mm



94PPA CHANNEL
23mm x 25mm



96W CHANNEL
15mm x 24mm



900 CHANNEL
30mm x 46mm

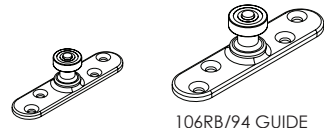
Guide channels

Description	Code	Price
92 Series 4m threshold guide channel - aluminium - anodised finish	92-A40	176.00
92 Series 6m threshold guide channel - aluminium - anodised finish	92-A60	237.00
94 Series 2m aluminium channel - anodised finish	94A-A20	51.00
94 Series 3m aluminium channel - anodised finish	94A-A30	64.50
94 Series 4m aluminium channel - anodised finish	94A-A40	104.00
94 Series 6m aluminium channel - anodised finish	94A-A60	128.00
94 Series 2m polypropylene channel - black	94P-20	25.00
94 Series 2.5m polypropylene channel - black	94P-25	30.00
94 Series 3m polypropylene channel - black	94P-30	39.00
94 Series 4m polypropylene channel - black	94P-40	47.00
94 Series 5m polypropylene channel - black	94P-50	55.50
94 Series 6m polypropylene channel - black	94P-60	70.00
94 Series 2m polypropylene channel with aluminium support - anodised finish	94PPA-A20	81.00
94 Series 2.5m polypropylene channel with aluminium support - anodised finish	94PPA-A25	103.00
94 Series 3m polypropylene channel with aluminium support - anodised finish	94PPA-A30	121.00
94 Series 4m polypropylene channel with aluminium support - anodised finish	94PPA-A40	148.00
94 Series 5m polypropylene channel with aluminium support - anodised finish	94PPA-A50	188.00
94 Series 6m polypropylene channel with aluminium support - anodised finish	94PPA-A60	220.00
96 Series 2m aluminium channel - anodised finish	96W-A20	61.00
96 Series 3m aluminium channel - anodised finish	96W-A30	91.50
96 Series 4m aluminium channel - anodised finish	96W-A40	121.00
96 Series 6m aluminium channel - anodised finish	96W-A60	183.00
900 Series 4m anodised aluminium guide channel	900A-A40	327.00
900 Series 6m anodised aluminium guide channel	900A-A60	488.00

Brio Guides and accessories

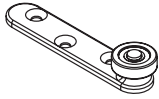
For straight sliding doors

Guides

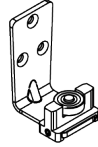


106E/94 GUIDE

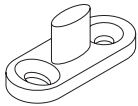
106RB/94 GUIDE



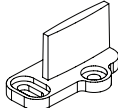
106SSMF GUIDE



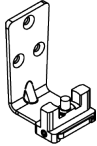
106A/94 GUIDE



531T GUIDE



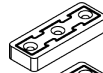
101N GUIDE



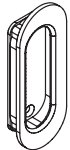
106AT GUIDE



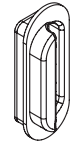
924 INTERLOCKER



924-DC GUIDE



401 FLUSH PULL



401D FLUSH PULL



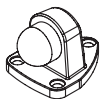
AQ21 FRAME SEAL



PS13B POLYPILE



PS16B POLYPILE



110SC DOOR STOP

Description	Code	Price
Sawcut guide - nylon - floor mounted	101N	6.00
Stainless steel sawcut guide - stainless steel	531T	43.00
Stainless steel sawcut guide - PVD black	531TPR	57.00
92 Series spring loaded guide - stainless steel	801S	16.50
Adjustable guide for multiple panels	106AT	53.50
94 Series guide - stainless steel plate and precision bearing - small mounting plate	106E/94	67.00
94 Series guide - stainless steel plate and precision bearing - large mounting plate	106RB/94	88.00
94 Series guide - stainless steel angle plate with adjustable precision bearing	106A/94	69.50
96 Series guide - stainless steel plate and nylon tyred precision bearing	106SSMF	63.50

Interlockers

Description	Code	Price
924 interlocker - clear anodised 2.4m (pack of two)	924-CA24	263.00
924 interlocker - clear anodised 4.8m	924-CA48	278.00
924 interlocker - black anodised 2.4m (pack of two)	924-BK24	322.00
924 interlocker - black anodised 4.8m	924-BK48	336.00
Door collector kit	924-DC	24.50

Flush pulls

Description	Code	Price
Flush pull - satin nickel (H105mm x W41mm x D11mm)	401SN	57.00
Flush pull with raised finger grip - satin nickel (H105mm x W41mm x D11mm)	401DSN	112.00
58mm Ø stainless steel pull - adjustable for 35-44mm thick doors	535T	127.00

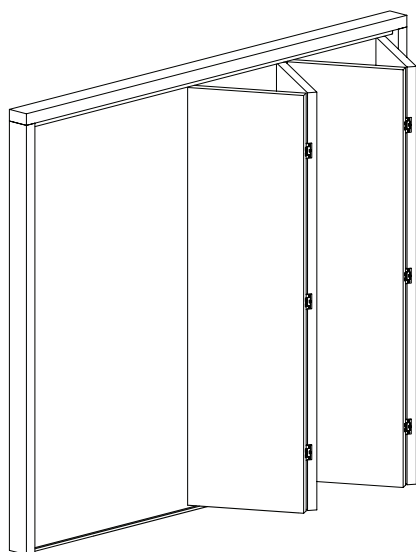
Track and perimeter seals

Description	Code	Price
AQ21 frame seal - black - 1m unit	AQ21BL/1	8.80
AQ21 frame seal - white - 1m unit	AQ21W/1	8.80
13mm Track seal - 1m unit	PS13B/1	3.30
16mm Track seal - 1m unit	PS16B/1	4.40

Floor / wall mounted door stop

Description	Code	Price
Door stop - satin chrome	110SC	23.00

Brio Multifold 30



Maximum door leaf weight	30kg
Maximum door leaf height	2.4m
Maximum door leaf width	650mm
Minimum door leaf thickness	19mm

Sets - include track and fittings

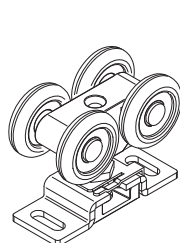
Description	Code	Price
Kit suitable for two door leaves, pack comprises: 1.3m length of track, one pivot set, one door hanger, one door stop, three flush hinges, one spanner, all screws and installation instructions.	MF30-13/2	138.00

Fittings packs

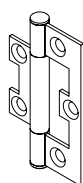
Description	Code	Price
Fittings pack with all items needed to hang two doors. Pack comprises: one pivot set, one door hanger, one door stop, three flush hinges, one spanner, all screws and installation instructions.	MF30-2PACK	124.00
Fittings pack with all items needed to hang four doors (moving in one direction). Pack comprises: one pivot set, two door hangers, one door stop, nine flush hinges, one spanner, all screws and installation instructions.	MF30-4PACK	219.00

Components

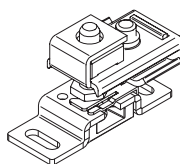
Description	Code	Price
1.3m aluminium track - mill finish	60A-13	44.00
2m aluminium track - mill finish	60A-20	60.00
3m aluminium track - mill finish	60A-30	88.50
4m aluminium track - mill finish	60A-40	114.00
6m aluminium track - mill finish	60A-60	148.00
Door Hanger - nylon body with top fixing plate	607	39.00
Track mounted door stop	60DS	9.40
Top pivot assembly	818	26.50
Bottom pivot	802	30.00
Wall bracket	806	26.00
Floor bracket	805	22.00
Non mortise hinge 65 x 38 x 1.5mm - zinc plated steel with screws	282Z	8.60
Non mortise hinge 65 x 38 x 1.5mm - stainless steel with screws	282SS	14.50
Guide - spring loaded - for use with 92 threshold channel	801S	16.50
Spanner for 607 hanger	805-SPN	6.90
4m 92 Series threshold guide channel - aluminium - anodised finish	92-A40	176.00
6m 92 Series threshold guide channel - aluminium - anodised finish	92-A60	237.00
2m 96 Series aluminium channel - anodised finish	96W-A20	61.00
3m 96 Series aluminium channel - anodised finish	96W-A30	91.50
4m 96 Series aluminium channel - anodised finish	96W-A40	121.00
6m 96 Series aluminium channel - anodised finish	96W-A60	183.00
96 Series guide - stainless steel plate and nylon tyred precision bearing	106SSMF	63.50



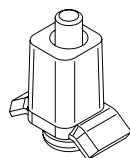
607 HANGER



282 HINGE



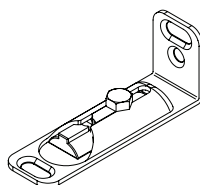
818 TOP PIVOT



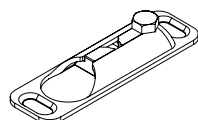
60DS DOOR STOP



802 BOTTOM PIVOT



806 WALL BRACKET



805 FLOOR BRACKET

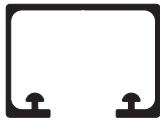


801S GUIDE

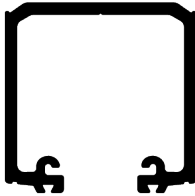


92 CHANNEL
9mm x 26mm

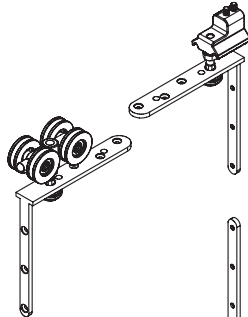
Brio Pivotfold, Centrefold and Endfold



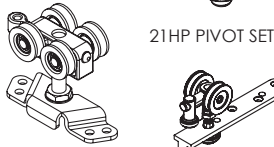
100 TRACK
30mm x 41mm



350 TRACK
50mm x 48mm



21/4 HANGER



21HP PIVOT SET

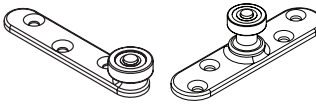


35ENP HANGER



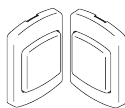
21HN HANGER

61/4 HANGER



106SSMF GUIDE

106RB/94 GUIDE



828

	35	75
Maximum door leaf weight	35kg	75kg
Maximum door leaf height	2.4m	3.3m
Maximum door leaf width	900mm	900mm
Maximum door leaf width (Centrefold)	920mm	1000mm
Door leaf thickness	35-50mm	44-50mm

Tracks

Description	Code	Price	Code	Price
2m aluminium - anodised finish	100-A20	68.00	350-A20	223.00
3m aluminium - anodised finish	100-A30	98.50	350-A30	339.00
4m aluminium - anodised finish	100-A40	131.00	350-A40	436.00
6m aluminium - anodised finish	100-A60	194.00	350-A60	655.00

Pivot sets - Pivotfold only

Description	Code	Price	Code	Price
Top and bottom pivot set - for use with bottom channel			21HP-C	398.00
Top and bottom pivot set - no bottom channel required	35EP	138.00	21HP	398.00

Door hangers - Pivotfold and Endfold

Description	Code	Price	Code	Price
Two wheel end hanger			21HN	271.00
Four wheel end or intermediate hanger	35ENP	78.00	21/4HN	310.00

Door hangers - Centrefold

Description	Code	Price	Code	Price
Four wheel end or intermediate hanger	35ENP	78.00	61/4HN	345.00

Guides - Pivotfold and Endfold

Description	Code	Price	Code	Price
94 Series guide - stainless steel plate and precision bearing	106E/94	67.00	106RB/94	88.00
94 Series guide - stainless steel angle plate and precision bearing	113RB/94	65.50	21RB/94	127.00
96 Series guide - stainless steel plate and nylon tyred precision bearing	106SSMF	63.50		

Guides - Centrefold

Description	Code	Price	Code	Price
94 Series guide - stainless steel plate and precision bearing	106E/94	67.00	106RB/94	88.00
96 Series guide - stainless steel plate and nylon tyred precision bearing	106SSMF	63.50		

Accessories

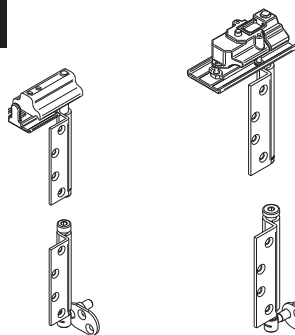
Description	Code	Price
Spanner for 57ENP and 35EP	M78-SPN	7.30
Surface mounted magnetic catch (two piece) - satin nickel	828SN	67.00
Surface mounted magnetic catch (two piece) - black	828PBK	67.00

Brio Interfold 35F and 50F

No bottom guide required - two or four panel units only

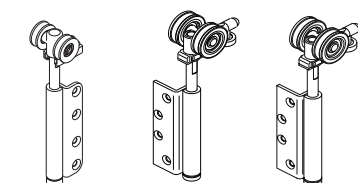


100 TRACK
30mm x 41mm



BWS1F-35H

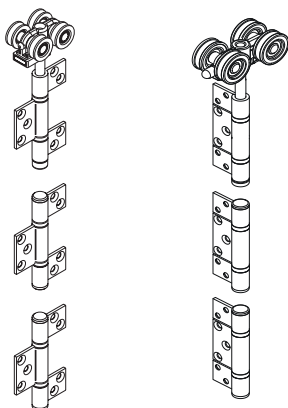
BWS1F-75H



BWS2F-35CM

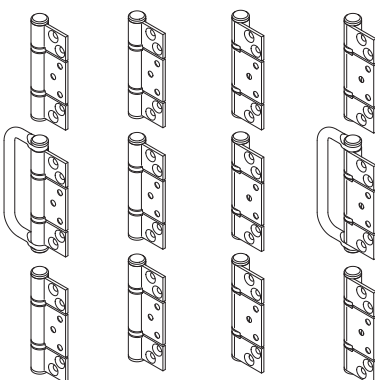
BWS2F-50CH

BWS2F-50CM



BWS4F-35CH

BWS4F-50CH



BW3

BW5

BW6

BW7

35F

Maximum door leaf weight	35kg
Maximum door leaf height	2.6m
Maximum door leaf width	820mm
Minimum door leaf thickness	35mm

50F

Maximum door leaf weight	50kg
Maximum door leaf height	2.6m
Maximum door leaf width	820mm
Minimum door leaf thickness	35mm

Tracks

Description	Code	Price
2m aluminium - anodised finish	100-A20	68.00
3m aluminium - anodised finish	100-A30	98.50
4m aluminium - anodised finish	100-A40	131.00
6m aluminium - anodised finish	100-A60	194.00

Code	Price
180A-A20	168.00
180A-A30	257.00
180A-A40	339.00
180A-A60	505.00

Pivot sets - non-mortice

Description	Code	Price
Sets consists of top pivot and jamb pivot		
Pivot set - satin stainless steel	BWS1F-35HSS	285.00

Code	Price
BWS1F-75HSS	427.00

Jamb pivots - non-mortice (for use with tall doors)

Description	Code	Price
Jamb pivot - satin stainless steel		

Code	Price
BW189HSS	162.00

End door hangers - non-mortice

Description	Code	Price
End hanger only		
End hanger - satin stainless steel	BWS2F-35CHSS	172.00

Code	Price
BWS2F-50CHSS	321.00

End door hangers - morticed

Description	Code	Price
End hanger only		
End hanger - satin stainless steel	BWS2F-35CMSS	186.00

Code	Price
BWS2F-50CMSS	349.00

Intermediate door hanger sets - non-mortice

Description	Code	Price
Sets consist of one hanger and two hinges		
Intermediate hanger set - satin stainless steel	BWS4F-35CHSS	363.00

Code	Price
BWS4F-50CHSS	440.00

Hinge sets - non-mortice

Description	Code	Price
Stainless steel fixed pin ball bearing hinges		
Intermediate hinge handle set - two hinges and one hinge handle - SSS	BW3-35HSS	166.00
Intermediate hinge set - three hinges - satin stainless steel	BW5-35HSS	159.00
Offset hinge set - three offset hinges - satin stainless steel	BW6-35HSS	159.00
Offset hinge set - two hinges and one hinge handle - satin stainless steel	BW7-35HSS	166.00

Code	Price
BW3-100HSS	182.00
BW5-100HSS	177.00
BW6-100HSS	177.00
BW7-100HSS	184.00

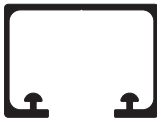
Single hinges - non-mortice

Description	Code	Price
Stainless steel fixed pin ball bearing hinges		
Intermediate hinge - satin stainless steel	125HS	55.50
Intermediate hinge handle - satin stainless steel	126HS	59.50
Offset hinge - satin stainless steel	129HS	55.50
Offset hinge handle - satin stainless steel	1296HS	59.50

Code	Price
BW215HSS	60.50
BW216HSS	79.00
BW219HSS	60.50
BW220HSS	79.00

Brio Interfold 35 and 50

Bottom guide required



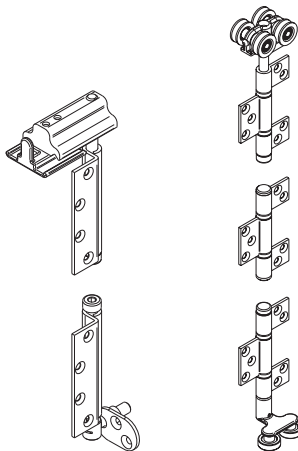
100 TRACK
30mm x 41mm



96W CHANNEL
15mm x 24mm

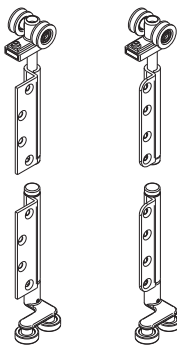


94PPA CHANNEL
23mm x 25mm

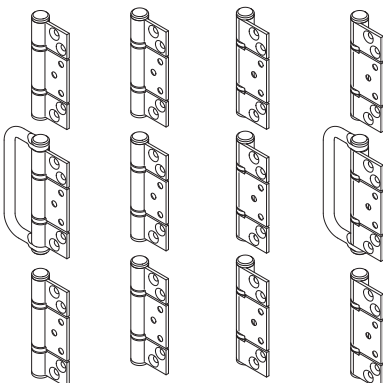


BWS1F-35H

BWS4-35CH



BWS2R-35CH BWSR-35CM



BW3

BW5

BW6

BW7

35

50

Maximum door leaf weight	35kg
Maximum door leaf height	2.6m
Maximum door leaf width	1m
Minimum door leaf thickness	35mm

Maximum door leaf weight	50kg
Maximum door leaf height	3m
Maximum door leaf width	1m
Minimum door leaf thickness	35mm

Tracks

Description	Code	Price
2m aluminium - anodised finish	100-A20	68.00
3m aluminium - anodised finish	100-A30	98.50
4m aluminium - anodised finish	100-A40	131.00
6m aluminium - anodised finish	100-A60	194.00

Code	Price
180A-A20	168.00
180A-A30	257.00
180A-A40	339.00
180A-A60	505.00

Guide channels

Description	Code	Price
2m aluminium channel - anodised finish (50kg inc polypropylene insert)	96W-A20	61.00
3m aluminium channel - anodised finish (50kg inc polypropylene insert)	96W-A30	91.50
4m aluminium channel - anodised finish (50kg inc polypropylene insert)	96W-A40	121.00
6m aluminium channel - anodised finish (50kg inc polypropylene insert)	96W-A60	183.00

Code	Price
94PPA-A20	81.00
94PPA-A30	121.00
94PPA-A40	148.00
94PPA-A60	220.00

Pivot sets - non-mortice

Description	Code	Price
Sets consist of top pivot and jamb pivot		
Pivot set - satin stainless steel	BWS1F-35HSS	285.00

Code	Price
BWS1F-75HSS	427.00

Jamb pivots - non-mortice (for use with tall doors)

Description	Code	Price
Jamb pivot - satin stainless steel		

Code	Price
BW189HSS	162.00

Intermediate door hanger sets - non-mortice

Description	Code	Price
Sets consists of hanger, guide and one hinge		
Intermediate hanger set - satin stainless steel	BWS4-35CHSS	424.00

Code	Price
BWS4-50CHSS	590.00

End door hanger sets - non-mortice

Description	Code	Price
Sets consist of end hanger and guide		
End hanger set - right - satin stainless steel	BWS2R-35CHSS	301.00
End hanger set - left - satin stainless steel	BWS2L-35CHSS	301.00
End hanger set - non handed - satin stainless steel		

Code	Price
BWS2-50CHSS	473.00

End door hanger sets - morticed

Description	Code	Price
Sets consist of end hanger and guide		
End hanger set - right - satin stainless steel	BWS2R-35CMSS	320.00
End hanger set - left - satin stainless steel	BWS2L-35CMSS	320.00
End hanger set - non handed - satin stainless steel		

Code	Price
BWS2-50CMSS	535.00
BWS2-50CMSS	535.00
BWS2-50CMSS	535.00

Hinge sets - non-mortice

Description	Code	Price
Stainless steel fixed pin ball bearing hinges		
Intermediate hinge handle set - two hinges and one hinge handle - satin stainless steel	BW3-35HSS	166.00
Intermediate hinge set - three hinges - satin stainless steel	BW5-35HSS	159.00
Offset hinge set - three offset hinges - satin stainless steel	BW6-35HSS	159.00
Offset hinge set - two hinges and one hinge handle - satin stainless steel	BW7-35HSS	166.00

Code	Price
BW3-100HSS	182.00
BW5-100HSS	177.00
BW6-100HSS	177.00
BW7-100HSS	184.00

Brio Guide channels, hinges and accessories

For folding doors



94 CHANNEL
20mm x 21mm



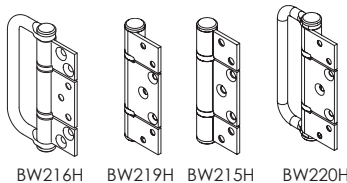
94P CHANNEL
20mm x 20mm



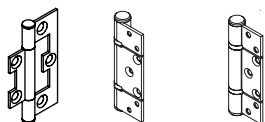
94PPA CHANNEL
23mm x 25mm



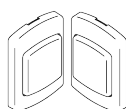
96W CHANNEL
15mm x 24mm



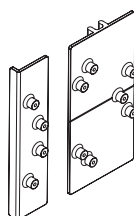
BW216H BW219H BW215H BW220H



282 HINGE 129HS 125HS



828



BW-DJH1

Guide channels

Description	Code	Price
2m 94 Series aluminium channel - anodised finish	94A-A20	51.00
3m 94 Series aluminium channel - anodised finish	94A-A30	64.50
4m 94 Series aluminium channel - anodised finish	94A-A40	104.00
6m 94 Series aluminium channel - anodised finish	94A-A60	128.00
2m 94 Series polypropylene channel - black	94P-20	25.00
2.5m 94 Series polypropylene channel - black	94P-25	30.00
3m 94 Series polypropylene channel - black	94P-30	39.00
4m 94 Series polypropylene channel - black	94P-40	47.00
5m 94 Series polypropylene channel - black	94P-50	55.50
6m 94 Series polypropylene channel - black	94P-60	70.00
2m 94 Series polypropylene channel with aluminium support - anodised finish	94PPA-A20	81.00
2.5m 94 Series polypropylene channel with aluminium support - anodised finish	94PPA-A25	103.00
3m 94 Series polypropylene channel with aluminium support - anodised finish	94PPA-A30	121.00
4m 94 Series polypropylene channel with aluminium support - anodised finish	94PPA-A40	148.00
5m 94 Series polypropylene channel with aluminium support - anodised finish	94PPA-A50	188.00
6m 94 Series polypropylene channel with aluminium support - anodised finish	94PPA-A60	220.00
2m 96 Series aluminium channel - anodised finish	96W-A20	61.00
3m 96 Series aluminium channel - anodised finish	96W-A30	91.50
4m 96 Series aluminium channel - anodised finish	96W-A40	121.00
6m 96 Series aluminium channel - anodised finish	96W-A60	183.00

Hinges - non-mortice

Description	Code	Price
Non mortice hinge 65 x 38 x 1.5mm - zinc plated steel with screws	282Z	8.60
Non mortice hinge 65 x 38 x 1.5mm - stainless steel with screws	282SS	14.50
Non mortice ball bearing hinge 85 x 57 x 2.5mm - satin stainless steel	125HS	55.50
Non mortice ball bearing hinge handle 85 x 57 x 2.5mm - satin stainless steel	126HS	59.50
Non mortice ball bearing offset hinge 85 x 57 x 2.5mm - satin stainless steel	129HS	55.50
Non mortice ball bearing offset hinge handle 85 x 57 x 2.5mm - satin stainless steel	1296HS	59.50
Non mortice ball bearing hinge 100 x 65 x 3mm - satin stainless steel	BW215HSS	60.50
Non mortice ball bearing hinge handle 100 x 65 x 3mm - satin stainless steel	BW216HSS	79.00
Non mortice ball bearing offset hinge 100 x 65 x 3mm - satin stainless steel	BW219HSS	60.50
Non mortice ball bearing offset hinge handle 100 x 65 x 3mm - satin stainless steel	BW220HSS	79.00

Magnetic catches

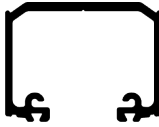
Description	Code	Price
Surface mounted magnetic catch (two piece) - satin nickel	828SN	67.00
Surface mounted magnetic catch (two piece) - black	828PBK	67.00

Accessories

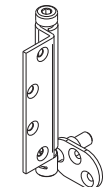
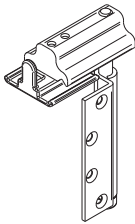
Description	Code	Price
Drilling jig for non-mortice hinges (Interfold 50 / 50F)	BW-DJH1	13.00

Brio Weatherfold 4s Servery 35

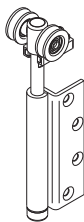
No bottom guide required - two panel or two + two panel layouts only



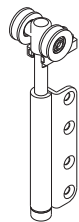
120A TRACK
30mm x 41mm



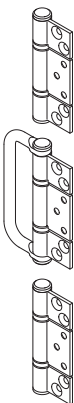
BWS1F-35H



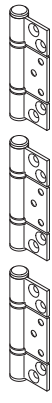
BWS2F-35SH



BWS2F-35SM



BW3-35H



BW5-35H



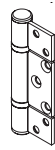
BW6-35H



BW7-35H



129HS



125HS

Maximum door leaf weight	35kg
Maximum door leaf height	1.8m
Maximum door leaf width	650mm
Minimum door leaf thickness	35mm

Tracks

Description	Code	Price
2m aluminium - anodised finish	120A-A20	78.00
3m aluminium - anodised finish	120A-A30	119.00
4m aluminium - anodised finish	120A-A40	140.00
6m aluminium - anodised finish	120A-A60	214.00

Pivot set - non-mortice

Description	Code	Price
Sets consist of top pivot and jamb pivot		
Pivot set - satin stainless steel	BWS1F-35HSS	285.00

End door hanger - non-morticed

Description	Code	Price
End hanger only		
End hanger - satin stainless steel	BWS2F-35SHSS	181.00

End door hanger - morticed (also suitable for rebated doors)

Description	Code	Price
End hanger only		
End hanger - satin stainless steel	BWS2F-35SMSS	189.00

Hinge sets - non-mortice

Description	Code	Price
Consists of three 85 x 57 x 2.5mm stainless steel fixed pin ball bearing hinges per set		
Intermediate hinge set - two hinges and one hinge handle - satin stainless steel	BW3-35HSS	166.00
Intermediate hinge set - three hinges - satin stainless steel	BW5-35HSS	159.00
Offset hinge set - three hinges - satin stainless steel	BW6-35HSS	159.00
Offset hinge set - two hinges and one hinge handle - satin stainless steel	BW7-35HSS	166.00

Single hinges - non-mortice

Description	Code	Price
85 x 57 x 2.5mm stainless steel fixed pin ball bearing hinges		
Intermediate hinge - satin stainless steel	125HS	55.50
Intermediate hinge handle - satin stainless steel	126HS	59.50
Offset hinge - satin stainless steel	129HS	55.50
Offset hinge handle - satin stainless steel	1296HS	59.50

Brio Weatherfold 4s Window 35

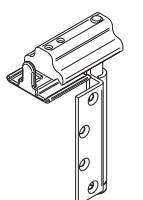
Bottom guide required



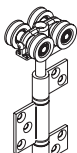
120A TRACK
30mm x 41mm



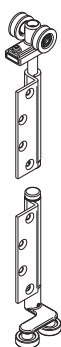
96W CHANNEL
15mm x 24mm



BWS1F-35H



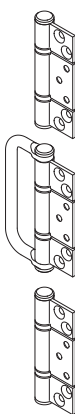
BWS4-35SH



BW2R-35SH



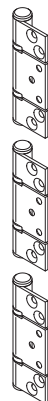
BWSR-35SM



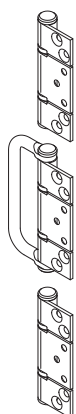
BW3-35H



BW5-35H



BW6-35H



BW7-35H

Maximum door leaf weight	35kg
Maximum door leaf height	1.8m
Maximum door leaf width	1m
Minimum door leaf thickness	35mm

Tracks

Description	Code	Price
2m aluminium - anodised finish	120A-A20	78.00
3m aluminium - anodised finish	120A-A30	119.00
4m aluminium - anodised finish	120A-A40	140.00
6m aluminium - anodised finish	120A-A60	214.00

Guide channels

Description	Code	Price
2m 96 Series aluminium channel - anodised finish	96W-A20	61.00
3m 96 Series aluminium channel - anodised finish	96W-A30	91.50
4m 96 Series aluminium channel - anodised finish	96W-A40	121.00
6m 96 Series aluminium channel - anodised finish	96W-A60	183.00

Pivot set - non-mortice

Description	Code	Price
Sets consist of top pivot and jamb pivot		
Pivot set - satin stainless steel	BWS1F-35HSS	285.00

Intermediate door hanger set - non-mortice

Description	Code	Price
Sets consist of hanger, guide and one hinge		
Intermediate hanger set - satin stainless steel	BWS4-35SHSS	434.00

End door hanger sets - non-mortice

Description	Code	Price
Sets consist of end hanger and guide		
End hanger set - right - satin stainless steel	BWS2R-35SHSS	306.00
End hanger set - left - satin stainless steel	BWS2L-35SHSS	306.00

End door hanger sets - morticed (also suitable for rebated doors)

Description	Code	Price
Sets consist of hanger and guide		
End hanger set - right - satin stainless steel	BWS2R-35SMSS	333.00
End hanger set - left - satin stainless steel	BWS2L-35SMSS	333.00

Hinge sets - non-mortice

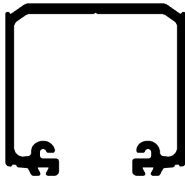
Description	Code	Price
Sets consist of three 85 x 57 x 2.5mm stainless steel fixed pin ball bearing hinges per set		
Intermediate hinge set - two hinges and one hinge handle - satin stainless steel	BW3-35HSS	166.00
Intermediate hinge set - inward opening - three hinges - satin stainless steel	BW5-35HSS	159.00
Offset hinge set - three hinges - satin stainless steel	BW6-35HSS	159.00
Offset hinge set - two hinges and one hinge handle - satin stainless steel	BW7-35HSS	166.00

Single hinges - non-mortice

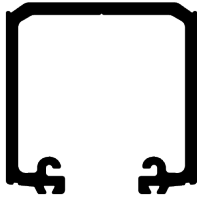
Description	Code	Price
85 x 57 x 2.5mm stainless steel fixed pin ball bearing hinges		
Intermediate hinge - satin stainless steel	125HS	55.50
Intermediate hinge handle - satin stainless steel	126HS	59.50
Offset hinge - satin stainless steel	129HS	55.50
Offset hinge handle - satin stainless steel	1296HS	59.50

Brio Weatherfold 4s 50 and 100

For timber and aluminium doors - non-mortice



180A TRACK
45mm x 47mm



350 TRACK
50mm x 48mm

Maximum leaf weight	50kg
Maximum leaf height	3m
Maximum leaf width	1m
Leaf thickness	35-68mm

100kg
3.3m
1m
35-68mm

Tracks

Description	Code	Price
2m aluminium - anodised finish	180A-A20	168.00
2.5m aluminium - anodised finish	180A-A25	223.00
3m aluminium - anodised finish	180A-A30	257.00
4m aluminium - anodised finish	180A-A40	339.00
5m aluminium - anodised finish	180A-A50	418.00
6m aluminium - anodised finish	180A-A60	505.00

Code	Price
350-A20	223.00
350-A25	281.00
350-A30	339.00
350-A40	436.00
350-A50	540.00
350-A60	655.00

Pivot sets - non-mortice

Description	Code	Price
Sets consist of top and bottom pivots		
Pivot set - satin stainless steel	BWS1-100HSS	427.00
Pivot set - PVD black	BWS1-100HPR	470.00

Code	Price
BWS1-100HSS	427.00
BWS1-100HPR	470.00

Jamb pivots - non-mortice

Description	Code	Price
Jamb pivot - satin stainless steel	BW189HSS	162.00
Jamb pivot - PVD black	BW189HPR	177.00

Code	Price
BW189HSS	162.00
BW189HPR	177.00

Intermediate door hanger sets - non-mortice

Description	Code	Price
Sets consist of hanger, guide and one hinge		
Intermediate hanger set - satin stainless steel	BWS4-50SHSS	640.00
Intermediate hanger set - PVD black	BWS4-50SHPR	700.00

Code	Price
BWS4-100SHSS	730.00
BWS4-100SHPR	795.00

End door hanger sets - for rebated doors

Description	Code	Price
Sets consist of top hanger and bottom guide		
End hanger set - satin stainless steel	BWS2-50SHSS	570.00
End hanger set - PVD black	BWS2-50SHPR	625.00

Code	Price
BWS2-100SHSS	655.00
BWS2-100SHPR	725.00

End door hanger sets - for rebated doors

Description	Code	Price
Sets consist of top hanger and bottom guide		
End hanger set for rebated doors - satin stainless steel	BWS2-50SRSS	570.00
End hanger set for rebated doors - PVD black	BWS2-50SRPR	625.00

Code	Price
BWS2-100SRSS	655.00
BWS2-100SRPR	725.00

End door hanger sets - face mounted

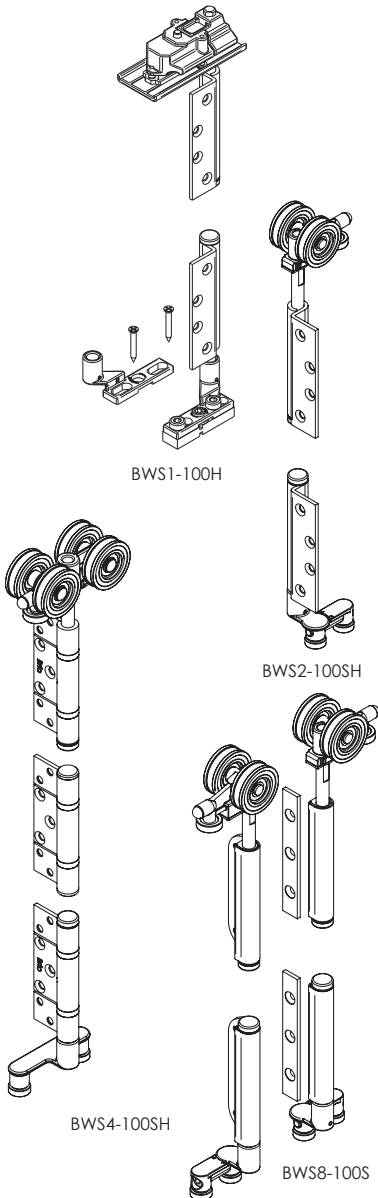
Description	Code	Price
Sets consist of top hanger and bottom guide		
End hanger set - satin stainless steel	BWS2-50SFSS	555.00

Code	Price
BWS2-100SFSS	640.00

Meeting door hanger sets - for rebated doors

Description	Code	Price
Sets consists of two hangers and two guides - one set for the rebated door and one set for surface mounting		
Meeting rebated door set - satin stainless steel	BWS8-50SSS	1,110.00

Code	Price
BWS8-100SSS	1,280.00



BWS1-100H

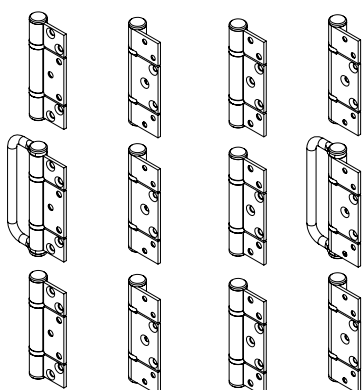
BWS2-100SH

BWS4-100SH

BWS8-100S

Brio Weatherfold 4s 50 and 100

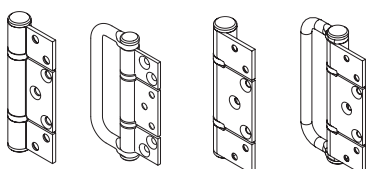
For timber and aluminium doors - non-mortice



BW3-100H BW6-100H BW5-100H BW7-100H

Hinge sets - 50 / 100kg non-mortice

Description	Code	Price
100 x 65 x 3mm stainless steel fixed pin ball bearing hinges		
Hinge set - two hinges and one hinge handle - satin stainless steel	BW3-100HSS	182.00
Hinge set - three hinges no hinge handle - satin stainless steel	BW5-100HSS	177.00
Offset hinge set - three hinges no hinge handle - satin stainless steel	BW6-100HSS	177.00
Offset hinge set - two hinges and one hinge handle - satin stainless steel	BW7-100HSS	184.00
Hinge set - two hinges and one hinge handle - PVD black	BW3-100HPR	202.00
Hinge set - three hinges no hinge handle - PVD black	BW5-100HPR	197.00
Offset hinge set - three hinges no hinge handle - PVD black	BW6-100HPR	197.00
Offset hinge set - two hinges and one hinge handle - PVD black	BW7-100HPR	202.00



BW215H BW216H BW219H BW220H

Single hinges - 50 / 100kg non-mortice

Description	Code	Price
100 x 65 x 3mm stainless steel fixed pin ball bearing hinges		
Intermediate hinge - satin stainless steel	BW215HSS	60.50
Intermediate hinge handle - satin stainless steel	BW216HSS	79.00
Offset hinge - satin stainless steel	BW219HSS	60.50
Offset hinge handle - satin stainless steel	BW220HSS	79.00
Intermediate hinge - PVD black	BW215HPR	65.50
Intermediate hinge handle - PVD black	BW216HPR	86.50
Offset hinge - PVD black	BW219HPR	65.50
Offset hinge handle - PVD black	BW220HPR	86.50

Guide channels



94 CHANNEL
20mm x 21mm



94P CHANNEL
20mm x 20mm

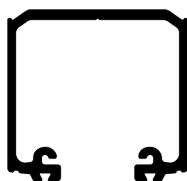


94PPA CHANNEL
23mm x 25mm

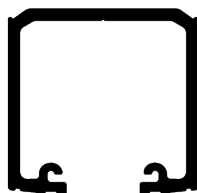
Description	Code	Price
2m 94 series aluminium channel - anodised finish	94A-A20	51.00
3m 94 series aluminium channel - anodised finish	94A-A30	64.50
4m 94 series aluminium channel - anodised finish	94A-A40	104.00
6m 94 series aluminium channel - anodised finish	94A-A60	128.00
2m 94 series polypropylene channel - black	94P-20	25.00
2.5m 94 series polypropylene channel - black	94P-25	30.00
3m 94 series polypropylene channel - black	94P-30	39.00
4m 94 series polypropylene channel - black	94P-40	47.00
5m 94 series polypropylene channel - black	94P-50	55.50
6m 94 series polypropylene channel - black	94P-60	70.00
2m 94 series polypropylene channel with aluminium support - anodised finish	94PPA-A20	81.00
2.5m 94 series polypropylene channel with aluminium support - anodised finish	94PPA-A25	103.00
3m 94 series polypropylene channel with aluminium support - anodised finish	94PPA-A30	121.00
4m 94 series polypropylene channel with aluminium support - anodised finish	94PPA-A40	148.00
5m 94 series polypropylene channel with aluminium support - anodised finish	94PPA-A50	188.00
6m 94 series polypropylene channel with aluminium support - anodised finish	94PPA-A60	220.00

Brio Weatherfold 4s 50 and 100

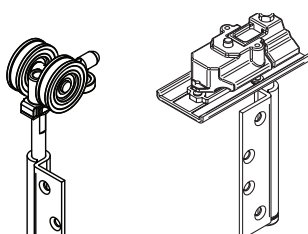
For timber doors – square mortice



180A TRACK
45mm x 47mm

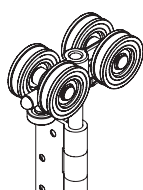
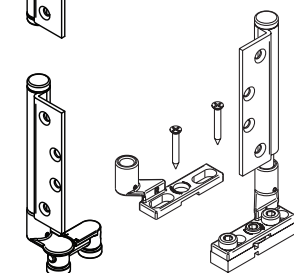


350 TRACK
50mm x 48mm



BWS2-100SM

BWS1-100M



BWS4-100SM

Maximum door leaf weight	50kg
Maximum door leaf height	3m
Maximum door leaf width	1m
Door leaf thickness	35-68mm

100kg
3.3m
1m
35-68mm

Tracks

Description	Code	Price
2m aluminium - anodised finish	180A-A20	168.00
2.5m aluminium - anodised finish	180A-A25	223.00
3m aluminium - anodised finish	180A-A30	257.00
4m aluminium - anodised finish	180A-A40	339.00
5m aluminium - anodised finish	180A-A50	418.00
6m aluminium - anodised finish	180A-A60	505.00

Code	Price
350-A20	223.00
350-A25	281.00
350-A30	339.00
350-A40	436.00
350-A50	540.00
350-A60	655.00

Pivot sets - square mortice

Description	Code	Price
Sets consist of top and bottom pivots		
Pivot set - satin stainless steel	BWS1-100MSS	450.00
Pivot set - polished brass	BWS1-100MPB	525.00

Code	Price
BWS1-100MSS	450.00
BWS1-100MPB	525.00

Jamb pivots - square mortice

Description	Code	Price
Jamb pivot - satin stainless steel	BW189MSS	171.00
Jamb pivot - polished brass	BW189MPB	186.00

Code	Price
BW189MSS	171.00
BW189MPB	186.00

Intermediate door hanger sets - square mortice

Description	Code	Price
Sets consist of hanger, guide and one hinge		
Intermediate hanger set - satin stainless steel	BWS4-50SMSS	705.00
Intermediate hanger set - polished brass	BWS4-50SMPB	875.00

Code	Price
BWS4-100SMSS	765.00
BWS4-100SMPB	915.00

End door hanger sets - square mortice

Description	Code	Price
Sets consist of top hanger and bottom guide		
End hanger set - stainless steel	BWS2-50SMSS	595.00
End hanger set - polished brass	BWS2-50SMPB	705.00

Code	Price
BWS2-100SMSS	730.00
BWS2-100SMPB	860.00

End door hanger sets - for rebated doors

Description	Code	Price
Sets consist of top hanger and bottom guide		
End hanger set for rebated doors - satin stainless steel	BWS2-50SRSS	570.00
End hanger set for rebated doors - polished brass	BWS2-50SRPB	645.00

Code	Price
BWS2-100SRSS	655.00
BWS2-100SRPB	765.00

End door hanger sets - face mounted

Description	Code	Price
Sets consist of top hanger and bottom guide		
End hanger set - satin stainless steel	BWS2-50SFSS	555.00
End hanger set - polished brass	BWS2-50SFPB	640.00

Code	Price
BWS2-100SFSS	640.00
BWS2-100SFPB	770.00

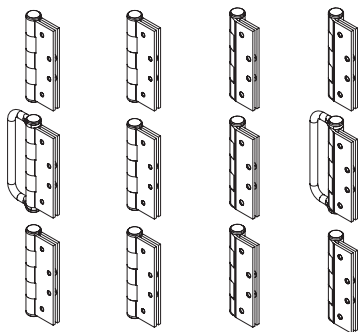
Meeting door hanger sets - for rebated doors

Description	Code	Price
Sets consists of two hangers and two guides - one set for the rebated door and one set for surface mounting		
Meeting rebated door set - satin stainless steel	BWS8-50SSS	1,110.00
Meeting rebated door set - polished brass	BWS8-50SPB	1,160.00

Code	Price
BWS8-100SSS	1,280.00
BWS8-100SPB	1,460.00

Brio Weatherfold 4s 50 and 100

For timber doors - square mortice

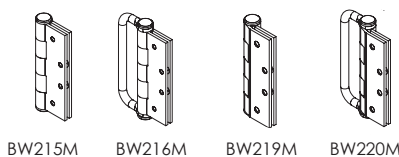


BW3-100M BW5-100M BW6-100M BW7-100M

Hinge sets - 50 / 100kg - square mortice

Description	Code	Price
100 x 65 x 3mm stainless steel fixed pin hinges		
Intermediate hinge handle set - two hinges and one hinge handle - satin stainless steel	BW3-100MSS	207.00
Intermediate hinge set - three hinges - satin stainless steel	BW5-100MSS	190.00
Offset hinge set - three offset hinges - satin stainless steel	BW6-100MSS	186.00
Offset hinge set - two hinges and one hinge handle - satin stainless steel	BW7-100MSS	207.00
Intermediate hinge set - two hinges and one hinge handle - polished brass	BW3-100MPB	238.00
Intermediate hinge set - three hinges - polished brass	BW5-100MPB	238.00
Offset hinge set - three hinges - polished brass	BW6-100MPB	226.00
Offset hinge handle set - two hinges and one hinge handle - polished brass	BW7-100MPB	238.00

Single hinges - 50 / 100kg - square mortice



BW215M BW216M BW219M BW220M

Description	Code	Price
100 x 65 x 3mm stainless steel fixed pin hinges		
Intermediate hinge - satin stainless steel	BW215MSS	70.50
Hinge handle - satin stainless steel	BW216MSS	78.00
Offset hinge - satin stainless steel	BW219MSS	74.50
Offset hinge handle - satin stainless steel	BW220MSS	93.00
Intermediate hinge only - polished brass	BW215MPB	82.00
Hinge handle - polished brass	BW216MPB	97.00
Offset hinge - polished brass	BW219MPB	82.00
Offset hinge handle - polished brass	BW220MPB	110.00



94P CHANNEL
20mm x 20mm



94 CHANNEL
20mm x 21mm



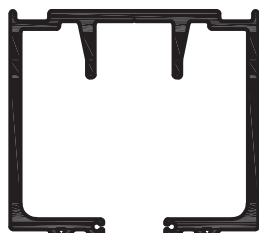
94PPA CHANNEL
23mm x 25mm

Guide channels

Description	Code	Price
2m 94 Series aluminium channel - anodised finish	94A-A20	51.00
3m 94 Series aluminium channel - anodised finish	94A-A30	64.50
4m 94 Series aluminium channel - anodised finish	94A-A40	104.00
6m 94 Series aluminium channel - anodised finish	94A-A60	128.00
2m 94 Series polypropylene channel - black	94P-20	25.00
2.5m 94 Series polypropylene channel - black	94P-25	30.00
3m 94 Series polypropylene channel - black	94P-30	39.00
4m 94 Series polypropylene channel - black	94P-40	47.00
5m 94 Series polypropylene channel - black	94P-50	55.50
6m 94 Series polypropylene channel - black	94P-60	70.00
2m 94 Series polypropylene channel with aluminium support - anodised finish	94PPA-A20	81.00
2.5m 94 Series polypropylene channel with aluminium support - anodised finish	94PPA-A25	103.00
3m 94 Series polypropylene channel with aluminium support - anodised finish	94PPA-A30	121.00
4m 94 Series polypropylene channel with aluminium support - anodised finish	94PPA-A40	148.00
5m 94 Series polypropylene channel with aluminium support - anodised finish	94PPA-A50	188.00
6m 94 Series polypropylene channel with aluminium support - anodised finish	94PPA-A60	220.00

Brio Weatherfold 4s 150

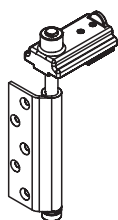
For timber and aluminium doors - non-mortice



700
87mm x 96mm



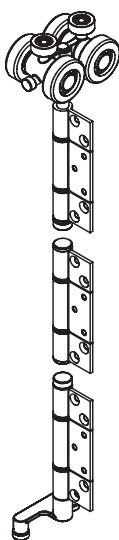
98PPA
30mm x 25mm



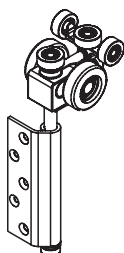
BWS1-150H



BW789H



BWS4-150SH



BWS2-150SH

Maximum leaf weight	150kg
Maximum leaf height	4m
Maximum leaf width	1.2m
Leaf thickness	44-68mm

Tracks

Description	Code	Price
4m aluminium - anodised finish	700-CA40	2,240.00
6m aluminium - anodised finish	700-CA60	3,330.00

Guide channels

Description	Code	Price
4m 98 Series polypropylene channel with aluminium support - anodised finish	98PPA-A40	500.00
6m 98 Series polypropylene channel with aluminium support - anodised finish	98PPA-A60	515.00

Pivot set - non-mortice

Description	Code	Price
Sets consist of top and bottom pivots		
Pivot set - satin stainless steel	BWS1-150HSS	1,020.00

Jamb pivot

Description	Code	Price
Jamb pivot - satin stainless steel	BW789HSS	334.00

End door hanger set - non-mortice

Description	Code	Price
Sets consist of top hanger and bottom guide		
End hanger - satin stainless steel	BWS2-150HSS	1,210.00

Intermediate door hanger set - non-mortice

Description	Code	Price
Sets consist of hanger, guide and one hinge		
Intermediate hanger - satin stainless steel	BWS4-150HSS	1,720.00

Joining rod

Description	Code	Price
Track jointing rod - pair	700TJR	49.50

Hinge sets - non-mortice

Description	Code	Price
150 x 90 x 4mm stainless steel fixed pin ball bearing hinges		
Intermediate hinge set - two hinges with one hinge handle - satin stainless steel	BW3-150HSS	770.00
Intermediate hinge set - three hinges - satin stainless steel	BW5-150HSS	535.00
Offset hinge set - three hinges - satin stainless steel	BW6-150HSS	545.00
Offset hinge set - two hinges with one hinge handle - satin stainless steel	BW7-150HSS	780.00

Single hinges - non-mortice

Description	Code	Price
150 x 90 x 4mm Stainless steel fixed pin ball bearing hinges		
150 x 90 x 4mm Intermediate hinge only - satin stainless steel	BW705HSS	177.00
150 x 90 x 4mm Offset hinge only - satin stainless steel	BW709HSS	182.00

Brio Weatherfold 4s accessories



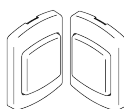
PS13B POLYPILE



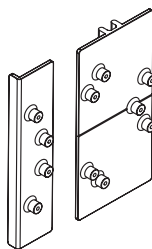
AQ21 FRAMESEAL



AQ63



828



BW-DJH1

Track, frame and perimeter seals

Description	Code	Price
13mm Track seal - 1m unit	PS13B/1	3.30
AQ21 frame seal - black - 1m unit	AQ21BL/1	8.80
AQ21 frame seal - white - 1m unit	AQ21W/1	8.80
AQ48 door seal - black - 1m unit	AQ48BL/1	8.80
AQ48 door seal - white - 1m unit	AQ48W/1	8.80
AQ63 door seal - black - 1m unit	AQ63BL/1	8.80
AQ63 door seal - white - 1m unit	AQ63W/1	8.80

Magnetic catches

Description	Code	Price
Surface mounted magnetic catch (2 piece) - satin nickel	828SN	67.00
Surface mounted magnetic catch (2 piece) - black	828PBK	67.00

Accessories

Description	Code	Price
Drilling jig for non-mortice hinges	BW-DJH1	13.00

Brio Flush bolts



456

456 - Square top flush bolts

Description	Code	Price
190mm 456 Flush bolt - satin nickel	456SN	220.00
450mm 456 Flush bolt - satin nickel	456LSN	349.00
600mm 456 Flush bolt - satin nickel	456LXSN-600	750.00
190mm 456 Flush bolt - polished brass	456PVDB	253.00



456E

456E - Square top lockable flush bolt

Description	Code	Price
190mm 456 Lockable flush bolt - satin nickel	456ESN-1	310.00



456N

456N - Square top necked flush bolt

Description	Code	Price
190mm 456 Necked flush bolt - satin nickel	456NSN	275.00



456R

456R - Round top standard flush bolts

Description	Code	Price
190mm 456R Flush bolt - satin nickel	456RSN	220.00
450mm 456R Flush bolt - satin nickel	456RLSN	349.00
190mm 456R Flush bolt - polished brass	456RPVDB	253.00
450mm 456R Flush bolt - polished brass	456RLPVDB	399.00
190mm 456R Flush bolt - PVD black	456RPVDR	241.00



456RE

456RE - Round top lockable flush bolt

Description	Code	Price
190mm 456R Lockable flush bolt - satin nickel	456RESN-1	310.00



456RN

456RN - Round top necked flush bolt

Description	Code	Price
190mm 456R Necked flush bolt - satin nickel	456RNSN	275.00



360

360 - Flush bolts

Description	Code	Price
110mm 360 Flush bolt - satin nickel	360SN	137.00
300mm 360 Flush bolt - satin nickel	360LSN	251.00
110mm 360 Flush bolt - polished brass	360PVDB	137.00
300mm 360 Flush bolt - polished brass	360LPVDB	251.00



360E

360E - Lockable flush bolts

Description	Code	Price
110mm 360 Lockable flush bolt - satin nickel	360ESN-1	186.00
110mm 360 Lockable flush bolt - polished brass	360EPVDB-1	186.00



360N

360N - Necked flush bolts

Description	Code	Price
110mm 360 Necked flush bolt - satin nickel	360NSN	165.00
110mm 360 Necked flush bolt - polished brass	360NPVDB	165.00

Flush bolt accessories



456 ROUTER

Description	Code	Price
Router bit for 456 flush bolt	ROUTER	381.00
Router bit for 360 flush bolt	ROUTER360	240.00
Replacement keeper for 360 and 456 flush bolts	456RKS	39.50

Brio 286 Dual Point Lock

Compatible with non-mortice Brio Weatherfold 4s, 50 and 100 door systems

Lock body

Description	Code	Price
286 Dual point lock body for timber doors, 35mm backset	286T-35	138.00
286 Dual point lock body for timber doors, 45mm backset	286T-45	138.00
286 Dual point lock body for aluminium doors	286A	115.00

Rod kits

Description	Code	Price
Kit consists of top and bottom rods, fixing cleats, hinge blocks (where necessary) and cover strip		
Timber door intermediate panel rod kit for panel heights between 1.3m and 2.5m (includes three hinge blocks)	286-25HS	481.00
Timber door intermediate panel rod kit for panel heights between 2.5m and 3.5m (includes four hinge blocks)	286-35HS	565.00
Timber door end panel rod kit for panel heights between 1.3m and 2.5m	286-25XS	360.00
Timber door end panel rod kit for panel heights between 2.5m and 3.5m	286-35XS	400.00
Aluminium door rod kit for panel heights between 1.3m and 2.5m	286-25D	417.00
Aluminium door rod kit for panel heights between 2.5m and 3.5m	286-35D	498.00

Rod kit accessories

Description	Code	Price
Additional hinge block for 286-25HS or 286-35HS	286-HBHS	86.50

Bifold lock furniture

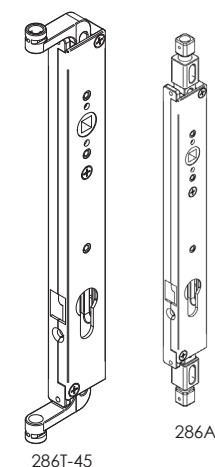
Description	Code	Price
286 bifold lock operator, non locking – satin stainless steel	286NSS	160.00
286 bifold lock operator, non locking – satin nickel	286NSN	107.00
286 bifold lock operator, non locking – black	286NPBK	94.00
286 bifold lock operator, locking with euro cylinder, two keys and short key – satin stainless steel	286L-40SS	200.00
286 bifold lock operator, locking with euro cylinder, two keys and short key – satin nickel	286L-40SN	148.00
286 bifold lock operator, locking with euro cylinder, two keys and short key – black	286L-40PBK	121.00

Lever furniture

Description	Code	Price
Furniture sets supplied with fixing screws and spindle, suitable for 44mm to 57mm door thickness		
288 lever furniture set – satin stainless steel	288-85SS	215.00
288 lever furniture set – satin nickel	288-85SN	175.00
288 lever furniture set – satin black	288-85PBK	148.00
288M magnetic lever furniture set (low profile exterior, standard interior), inc. magnets – satin nickel	288M-85SN	202.00
288M magnetic lever furniture set (low profile exterior, standard interior), inc. magnets – black	288M-85PBK	175.00

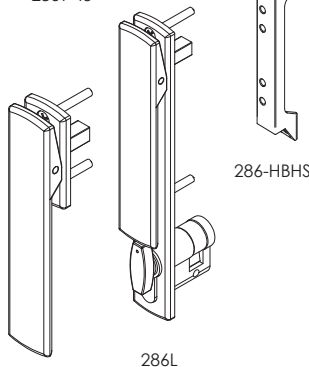
Magnetic catches

Description	Code	Price
Surface mounted magnetic catch (2 piece) – satin nickel	828SN	67.00
Surface mounted magnetic catch (2 piece) – black	828PBK	67.00



286T-45

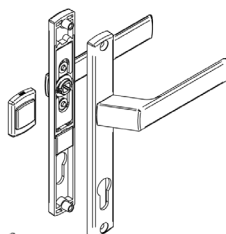
286A



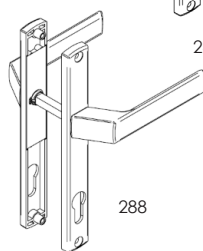
286-HBHS

286L

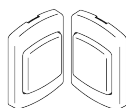
286N



288M



288



828SN