

# Sliding & Folding

S02 Finish glossary

S02 Warranty

## **Straight sliding top hung**

S03 Brio Sprintline 30

S04 Brio Wardrobe Single 50

S05 Brio Wardrobe Double 50

S06 Brio Single Run 60

S07 Brio Quick Run 120

S09 Brio Single Run Exterior 120

S10 Brio Pro Run 200

S11 Brio Pro Run 400

S12 Brio Zero Clearance 60

S13 Brio Open Round Rail Glass 100

S14 Brio Open Bar Rail Timber 80

S15 Brio Open Round Rail Timber 100

S16 Brio Open Square Rail Timber 150

## **Straight sliding bottom rolling**

S17 Brio Wardrobe Roll 50

S18 Brio Wardrobe Roll Trio 50

S19 Brio Timberoll

S20 Brio Guide channels and accessories

## **Interior folding**

S22 Brio Multifold 30

S23 Brio Pivotfold 35 and 75

S23 Brio Centrefold 35 and 75

S23 Brio Endfold 35 and 75

S24 Brio Guide channels, hinges and accessories

## **Exterior folding**

S25 Brio Weatherfold 4s Servery 35

S26 Brio Weatherfold 4s Window 35

S27 Brio Weatherfold 4s 50 and 100 - non-mortice hinges

S29 Brio Weatherfold 4s 50 and 100 - square mortice hinges

S31 Brio Weatherfold 4s 150

S32 Brio Weatherfold 4s accessories

## **Flush bolts and locking solutions**

S33 Brio Flush bolts

S34 Brio 286 Dual point lock

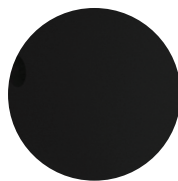
# Finish glossary

These colours are indicative only, subject to limitations in the printing process.



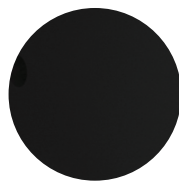
**ABZ**

Antique Bronze



**BLACK**

Black Powder Coat



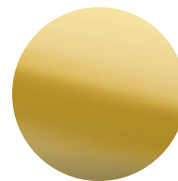
**BA**

Black Anodised



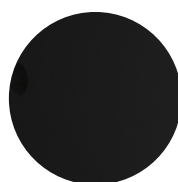
**CA**

Clear Anodised



**PB**

Polished Brass



**PVD-B**

Physical Vapour  
Deposition - Black



**SNP**

Satin Nickel Plate



**SSS**

Satin Stainless Steel



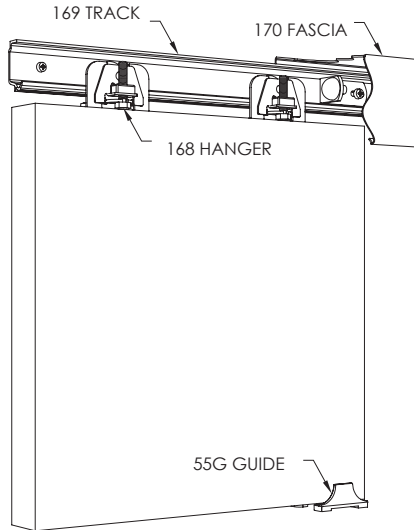
**WHITE**

White Powder Coat

# Warranty

Brio sliding and folding door hardware has a 10 year mechanical warranty.

# Brio Sprintline 30



Maximum door weight	30kg
Minimum door thickness	25mm

Sets - includes track and fittings for one door

Description	Code	Price
Kit suitable to hang one door, comprising: 1.6m length of aluminium track, two door hangers, two track mounted door stops, one sawcut guide, one surface mounted guide, all screws and installation instructions.	SL30-16/1	92.50
Kit suitable to hang one door, comprising: 2.4m length of aluminium track, two door hangers, two track mounted door stops, one sawcut guide, one surface mounted guide, all screws and installation instructions.	SL30-24/1	112.00

Fittings pack

Description	Code	Price
Fittings pack with all items needed to hang one door (excluding track), pack comprises two door hangers, two track mounted door stops, one sawcut guide, one surface mounted guide, all screws and installation instructions.	SL30-1PK	56.00

Components

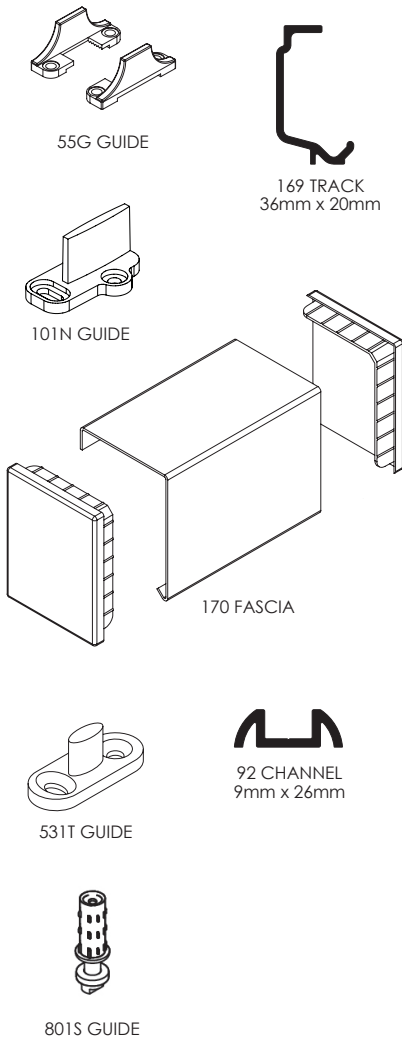
Description	Code	Price
1.6m Sprintline 30 track	169-16	38.00
2.4m Sprintline 30 track	169-24	59.00
Track mounted door stop - steel with rubber buffer	263	13.00
Wall mounted door stop - nylon	28N	9.40
Floor mounted surface guide - nylon	55G	6.20
Sprintline door hanger	168	19.50
Sawcut guide - nylon - floor mounted	101N	6.50

Optional fascia

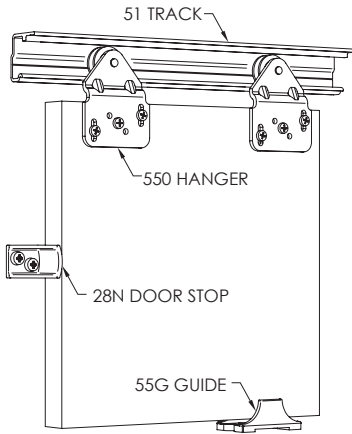
Description	Code	Price
1.8m hook-on aluminium fascia in pearl white finish includes end caps	170-18	134.00
3m hook-on aluminium fascia in pearl white finish includes end caps	170-30	290.00

Alternative door guide systems

Description	Code	Price
Stainless steel sawcut guide	531T	46.00
92 Series spring loaded guide - stainless steel	801S	17.50
4m 92 Series threshold guide channel - aluminium - anodised finish	92-A40	195.00
6m 92 Series threshold guide channel - aluminium - anodised finish	92-A60	262.00



# Brio Wardrobe Single 50



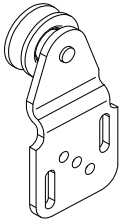
Maximum door weight	50kg
Minimum door thickness	16mm

Sets - includes track and fittings for one door

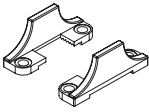
Description	Code	Price
Kit suitable to hang one door, comprising: 1.2m length of aluminium track, two door hangers, two door stops, one sawcut guide, one surface mounted guide, all screws and installation instructions.	WS50-12/1	76.50
Kit suitable to hang one door, comprising: 1.5m length of aluminium track, two door hangers, two door stops, one sawcut guide, one surface mounted guide, all screws and installation instructions.	WS50-15/1	87.50
Kit suitable to hang one door, comprising: 1.8m length of aluminium track, two door hangers, two door stops, one sawcut guide, one surface mounted guide, all screws and installation instructions.	WS50-18/1	104.00



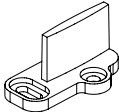
51 TRACK  
28mm x 29mm



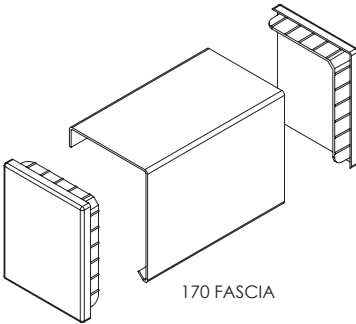
550 HANGER



55G GUIDE



101N GUIDE



170 FASCIA

## Fittings pack

Description	Code	Price
Fittings pack with all items needed to hang one door (excluding track), pack comprises of two reversible door hangers, two wall mounted door stops, one sawcut guide, one surface mounted guide, all screws and installation instructions.	WS50-1PK	51.50

## Components

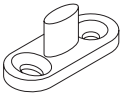
Description	Code	Price
1.2m Wardrobe Single 50 track	51-12	29.00
1.5m Wardrobe Single 50 track	51-15	38.00
1.8m Wardrobe Single 50 track	51-18	53.50
2.4m Wardrobe Single 50 track	51-24	71.00
3m Wardrobe Single 50 track	51-30	89.00
3.6m Wardrobe Single 50 track	51-36	107.00
4.8m Wardrobe Single 50 track	51-48	118.00
Wardrobe Single / Double 50 - Outer hanger	550	15.50
Wardrobe Single / Double 50 - Reversible hanger	552	17.50
Wall mounted door stop - nylon	28N	9.40
Floor mounted surface guide - nylon	55G	6.20
Sawcut guide - nylon - floor mounted	101N	6.50

## Optional fascia

Description	Code	Price
1.8m hook-on aluminium fascia in pearl white finish includes end caps	170-18	134.00
3m hook-on aluminium fascia in pearl white finish includes end caps	170-30	290.00

## Alternative door guide systems

Description	Code	Price
Stainless steel sawcut guide	531T	46.00
92 Series spring loaded guide - stainless steel	801S	17.50
4m 92 Series threshold guide channel - aluminium - anodised finish	92-A40	195.00
6m 92 Series threshold guide channel - aluminium - anodised finish	92-A60	262.00



531T GUIDE

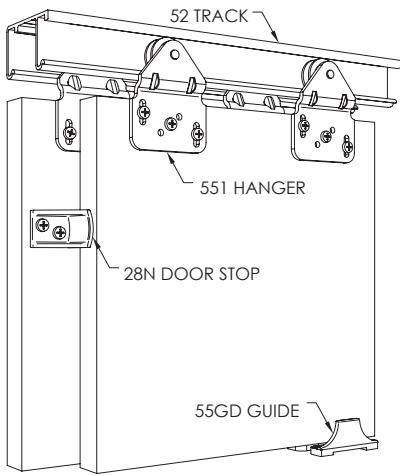


92 CHANNEL  
9mm x 26mm



801S GUIDE

# Brio Wardrobe Double 50



Maximum door weight	50kg
Minimum door thickness	16mm

Sets - include track and fittings for two or three doors

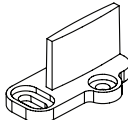
Description	Code	Price
Kit suitable for two doors, comprising: 1.2m length of double run aluminium track, two inner hangers, two outer hangers, two door stops, one double surface mounted guide, two sawcut guides, all screws and installation instructions.	WD50-12/2	128.00
Kit suitable for two doors, comprising: 1.5m length of double run aluminium track, two inner hangers, two outer hangers, two door stops, one double surface mounted guide, two sawcut guides, all screws and installation instructions.	WD50-15/2	136.00
Kit suitable for two doors, comprising: 1.8m length of double run aluminium track, two inner hangers, two outer hangers, two door stops, one double surface mounted guide, two sawcut guides, all screws and installation instructions.	WD50-18/2	151.00
Kit suitable for three doors, comprising: 2.4m length of double run aluminium track, two inner hangers, two outer hangers, two reversible hangers, two door stops, two double surface mounted guides, three sawcut guides, all screws and installation instructions.	WD50-24/3	201.00

## Fittings pack

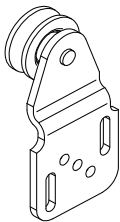
Description	Code	Price
Fittings pack with all items needed to hang two doors (excluding track), pack comprises two inner door hangers, two outer door hangers, one door stop, two sawcut guides, one surface mounted double guide, all screws and installation instructions.	WD50-2PK	78.00



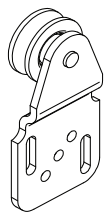
52 TRACK  
28mm x 52mm



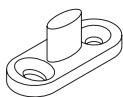
101N GUIDE



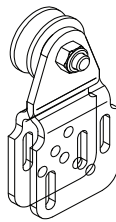
550 HANGER



551 HANGER



531T GUIDE



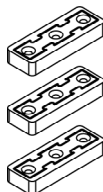
552 HANGER



92 CHANNEL  
9mm x 26mm



801S GUIDE



924-DC

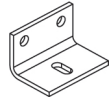
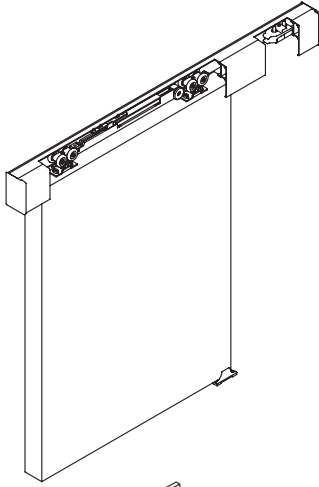
## Components

Description	Code	Price
1.2m Wardrobe Double 50 track	52-12	57.50
1.5m Wardrobe Double 50 track	52-15	71.00
1.8m Wardrobe Double 50 track	52-18	86.00
2.4m Wardrobe Double 50 track	52-24	116.00
3m Wardrobe Double 50 track	52-30	145.00
3.6m Wardrobe Double 50 track	52-36	175.00
4.8m Wardrobe Double 50 track	52-48	194.00
Wall mounted nylon door stop	28N	9.40
Floor mounted nylon surface guide for bi-passing doors	55GD	11.00
Wardrobe Single / Double 50 - Outer hanger	550	15.50
Wardrobe Double 50 - Inner hanger	551	15.50
Wardrobe Single / Double 50 - Reversible hanger	552	17.50
Sawcut guide - nylon - floor mounted	101N	6.50

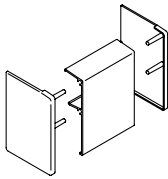
## Alternative door guide systems

Description	Code	Price
Stainless steel sawcut guide	531T	46.00
92 Series spring loaded guide	801S	17.50
4m 92 Series threshold guide channel - aluminium - anodised finish	92-A40	195.00
6m 92 Series threshold guide channel - aluminium - anodised finish	92-A60	262.00
Door collector kit	924-DC	26.00

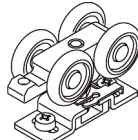
# Brio Single Run 60



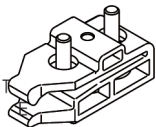
91Z BRACKET



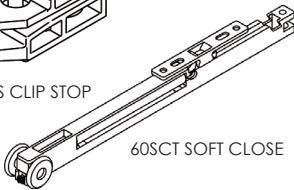
63 FASCIA

60A TRACK  
31mm x 30mm

607 HANGER



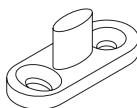
60CS CLIP STOP



60SCT SOFT CLOSE



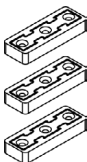
101N GUIDE

92 CHANNEL  
9mm x 26mm

531T GUIDE



801S GUIDE



924-DC

Maximum door weight	60kg
Minimum door thickness	19mm

## Sets - includes track and fittings for one door

Description	Code	Price
Kit suitable for one door, kit comprises: 2m length of aluminium track, five wall mounting brackets, two door hangers, two track mounted door stops, one surface mounted guide, one sawcut guide, spanner, all screws and installation instructions.	SR60-20/1	207.00
Kit suitable for one door, kit comprises: 3m length of aluminium track, five wall mounting brackets, two door hangers, two track mounted door stops, one surface mounted guide, one sawcut guide, spanner, all screws and installation instructions.	SR60-30/1	310.00

## Fittings pack

Description	Code	Price
Fittings pack with all items needed to hang one door (excluding track), pack comprises of two hangers, two door stops, one surface mounted guide, one sawcut guide, spanner, all screws and installation instructions.	SR60-1PK	119.00

## Track brackets - for wall fixing track

Description	Code	Price
Single with fasteners	91Z	9.80
Five pack with fasteners	91Z/5	45.00

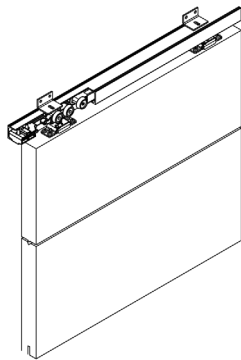
## Fascia

Description	Code	Price
2m Fascia and end cap set for Single Run 60 - powder coated white	63-20PWT	140.00
3m Fascia and end cap set for Single Run 60 - powder coated white	63-30PWT	211.00
2m Fascia and end cap set for Single Run 60 - anodised	63-20CA	140.00
3m Fascia and end cap set for Single Run 60 - anodised	63-30CA	211.00

## Components

Description	Code	Price
2m aluminium track - mill finish	60A-20	64.00
3m aluminium track - mill finish	60A-30	95.00
4m aluminium track - mill finish	60A-40	122.00
6m aluminium track - mill finish	60A-60	159.00
Single Run 60 Door Hanger	607	42.00
Track mounted retaining clip stop	60CS	20.00
Soft close unit	60SCT	86.50
Sawcut guide - nylon - floor mounted	101N	6.50
Spanner for 605 and 606 hanger	805-SPN	7.40
4m 92 Series threshold guide channel - aluminium - anodised finish	92-A40	195.00
6m 92 Series threshold guide channel - aluminium - anodised finish	92-A60	262.00
Stainless steel sawcut guide	531T	46.00
81 or 92 Series spring loaded guide - stainless steel	801S	17.50
Door collector kit	924-DC	26.00

# Brio Quick Run 120

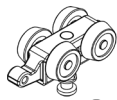


Maximum door weight	120kg
Minimum door thickness (surface mount, recessed mount door hangers)	28mm
Minimum door thickness (zero clearance door hangers)	32mm

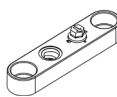
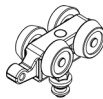
## Fitting packs

Description	Code	Price
Quick Run 120 1 Door fittings pack – surface mount door hangers Comprises two surface mount door hangers, two clip stops, one saw cut guide	QR120S-C1PK	223.00
Quick Run 120 1 Door fittings pack – recessed mount door hangers Comprises two recessed mount door hangers, two clip stops, one saw cut guide	QR120R-C1PK	248.00
Quick Run 120 1 Door fittings pack – zero clearance door hangers Comprises two zero clearance door hangers, two clip stops, one saw cut guide	QR120Z-C1PK	473.00

## Kit sets with surface mount door hangers (to hang one door)



No. 57JNP  
HANGER



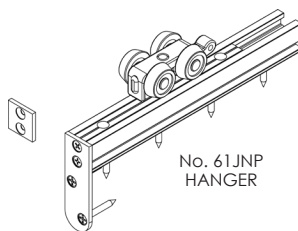
No. 58JNP  
HANGER

Description	Code	Price
Quick Run 120F 2m kit set with surface mount door hangers and clip stops Comprises 2m 120F track, two surface mount door hangers, two clip stops, one saw cut guide	QR120S-C20F/1	290.00
Quick Run 120F 3m kit set with surface mount door hangers and clip stops Comprises 3m 120F track, two surface mount door hangers, two clip stops, one saw cut guide	QR120S-C30F/1	320.00
Quick Run 120F 2m kit set with surface mount door hanger and soft close Comprises 2m 120F track, two surface mount door hangers, two soft close units, one saw cut guide	QR120S-S20F/1	595.00
Quick Run 120F 3m kit set with surface mount door hangers and soft close Comprises 3m 120F track, two surface mount door hangers, two soft close units, one saw cut guide	QR120S-S30F/1	620.00

## Kit sets with recessed mount door hangers (to hang one door)

Description	Code	Price
Quick Run 120F 2m kit set with recessed mount door hangers and clip stops Comprises 2m 120F track, two recessed mount door hangers, two clip stops, one saw cut guide	QR120R-C20F/1	315.00
Quick Run 120F 3m kit set with recessed mount door hangers and clip stops Comprises 3m 120F track, two recessed mount door hangers, two clip stops, one saw cut guide	QR120R-C30F/1	352.00
Quick Run 120F 2m kit set with recessed mount door hangers and soft close Comprises 2m 120F track, two recessed mount door hangers, two soft close units, one saw cut guide	QR120R-S20F/1	615.00
Quick Run 120F 3m kit set with recessed mount door hangers and soft close Comprises 3m 120F track, two recessed mount door hangers, two soft close units, one saw cut guide	QR120R-S30F/1	650.00

## Kit sets with zero clearance door hangers (to hang one door)



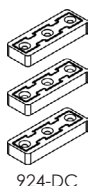
No. 61JNP  
HANGER

Description	Code	Price
Quick Run 120F 2m kit set with zero clearance door hangers and clip stops Comprises 2m 120F track, two zero clearance door hangers, two clip stops, one saw cut guide	QR120Z-C20F/1	545.00
Quick Run 120F 3m kit set with zero clearance door hangers and clip stops Comprises 3m 120F track, two zero clearance door hangers, two clip stops, one saw cut guide	QR120Z-C30F/1	570.00
Quick Run 120C 2m kit set with zero clearance door hangers and clip stops Comprises 2m 120C track, two zero clearance door hangers, two clip stops, one saw cut guide	QR120Z-C20C/1	560.00
Quick Run 120C 3m kit set with zero clearance door hangers and clip stops Comprises 3m 120C track, two zero clearance door hangers, two clip stops, one saw cut guide	QR120Z-C30C/1	595.00
Quick Run 120F 2m kit set with zero clearance door hangers and soft close Comprises 2m 120F track, two zero clearance door hangers, two soft close units, one saw cut guide	QR120Z-S20F/1	845.00
Quick Run 120F 3m kit set with zero clearance door hangers and soft close Comprises 3m 120F track, two zero clearance door hangers, two soft close units, one saw cut guide	QR120Z-S30F/1	875.00
Quick Run 120C 2m kit set with zero clearance door hangers and soft close Comprises 2m 120C track, two zero clearance door hangers, two soft close units, one saw cut guide	QR120Z-S20C/1	855.00
Quick Run 120C 3m kit set with zero clearance door hangers and soft close Comprises 3m 120C track, two zero clearance door hangers, two soft close units, one saw cut guide	QR120Z-S30C/1	895.00

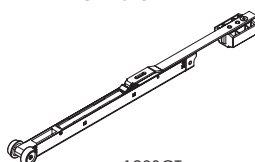
## Door hanger sets

Description	Code	Price
Surface mount door hanger set (pair) with quick fix surface mount top plates	57JNP	158.00
Recessed mount door hanger set (pair) with quick fix recessed mount top plates	58JNP	188.00
Zero clearance door hanger set (pair)	61JNP	194.00

## Door stops and accessories



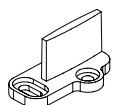
924-DC



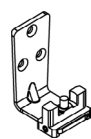
120SCT  
SOFT CLOSE

Description	Code	Price
Track mounted door stop for Quick Run 120 / Quick Run Zero Clearance 120 door hangers	120CS	42.50
Soft close kit for Quick Run 120 / Quick Run Zero Clearance 120	120SCT	212.00
Door collector kit	924-DC	26.00

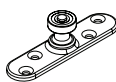
# Brio Quick Run 120



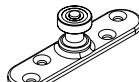
101N GUIDE



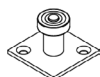
106AT GUIDE



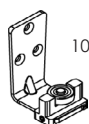
106E/94 GUIDE



106RB/94 GUIDE



104W/94 GUIDE



106A/94 GUIDE



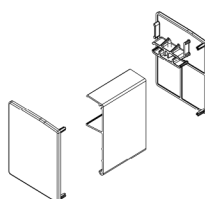
120F TRACK



120C TRACK



120E TRACK



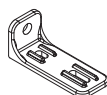
123 FASCIA



91Z BRACKET



1SS/250 BRACKET



5SS/120 BRACKET

## Guides

Description	Code	Price
Sawcut guide - nylon - floor mounted	101N	6.50
Stainless steel sawcut guide	531T	46.00
Adjustable guide for multiple panels	106AT	57.50
94 Series guide - stainless steel plate and precision bearing	106E/94	72.00
94 Series guide - large stainless steel mounting plate and precision bearing	106RB/94	94.50
94 Series guide - square mounting plate	104W/94PR	40.50
94 Series guide - stainless steel angle plate with adjustable precision bearing	106A/94	74.50

## Standard track (Type F)

Description	Code	Price
2m aluminium - clear anodised finish	120F-A20	73.00
3m aluminium - clear anodised finish	120F-A30	110.00
4m aluminium - clear anodised finish	120F-A40	146.00
6m aluminium - clear anodised finish	120F-A60	212.00

## Tracks suitable for recessing into the ceiling (Type C)

Description	Code	Price
2m aluminium - clear anodised finish	120C-A20	90.50
3m aluminium - clear anodised finish	120C-A30	133.00
4m aluminium - clear anodised finish	120C-A40	175.00
6m aluminium - clear anodised finish	120C-A60	254.00

## Tracks for use with 123 fascia (Type E)

Description	Code	Price
2m aluminium - clear anodised finish	120E-A20	90.50
3m aluminium - clear anodised finish	120E-A30	133.00
4m aluminium - clear anodised finish	120E-A40	175.00
6m aluminium - clear anodised finish	120E-A60	254.00

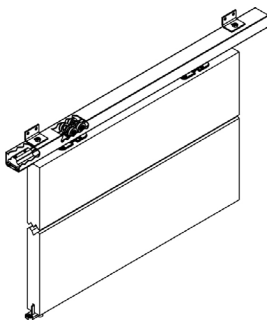
## Fascia for 120E track only

Description	Code	Price
2m aluminium - clear anodised finish	123-20CA	120.00
3m aluminium - clear anodised finish	123-30CA	180.00
4m aluminium - clear anodised finish	123-40CA	234.00
6m aluminium - clear anodised finish	123-60CA	347.00

## Track brackets - for wall fixing track

Description	Code	Price
Single with fasteners	91Z	9.80
Five pack with fasteners	91Z/5	45.00
Heavy duty bracket - cast stainless steel	1SS/250	57.00
Bracket for hanging two lines of track - cast stainless steel	5SS/120	104.00

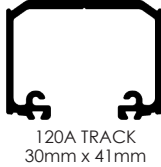
# Brio Single Run Exterior 120



Maximum door weight	120kg
Minimum door thickness	28mm

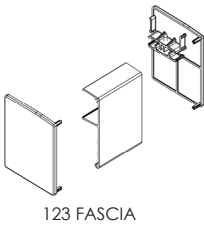
Sets - includes track and fittings for one door

Description	Code	Price
Kit suitable for one door, kit comprises: 2m length of aluminium track, two standard door hangers, two track mounted door stops, one sawcut guide and installation instructions.	SR120SS-20/1	665.00
Kit suitable for one door, kit comprises: 3m length of aluminium track, two standard door hangers, two track mounted door stops, one sawcut guide and installation instructions.	SR120SS-30/1	750.00



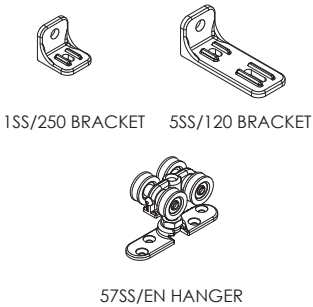
## Fittings pack

Description	Code	Price
Fittings pack with all items needed to hang one door (excluding track), pack comprises of two standard door hangers, two door stops, one sawcut guide and installation instructions.	SR120SS-1PK	490.00



## Tracks

Description	Code	Price
2m aluminium - anodised finish	120A-A20	83.50
3m aluminium - anodised finish	120A-A30	127.00
4m aluminium - anodised finish	120A-A40	150.00
6m aluminium - anodised finish	120A-A60	230.00

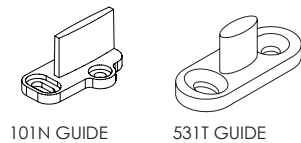


## Fascia

Description	Code	Price
2m Fascia and end cap set for 120A Track - anodised finish	123-20CA	120.00
3m Fascia and end cap set for 120A Track - anodised finish	123-30CA	180.00
4m Fascia and end cap set for 120A Track - anodised finish	123-40CA	234.00
6m Fascia and end cap set for 120A Track - anodised finish	123-60CA	347.00

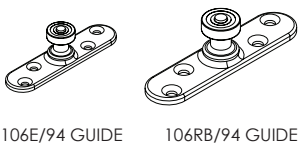
## Track brackets - for wall fixing track

Description	Code	Price
Heavy duty bracket - cast stainless steel	1SS/250	57.00
Bracket for hanging two lines of track - cast stainless steel	5SS/120	104.00



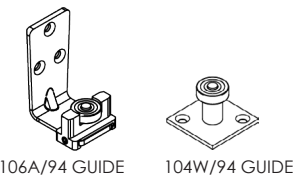
## Door hangers (always use two per door)

Description	Code	Price
Type 57 - surface mounted pressed top plate with nylon wheels and stainless steel bearings	57SS/EN	228.00



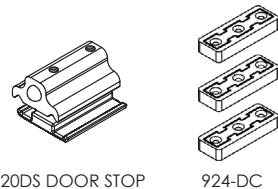
## Guides

Description	Code	Price
Sawcut guide - nylon - floor mounted	101N	6.50
Stainless steel sawcut guide	531T	46.00
Adjustable guide for multiple panels	106AT	57.50
94 Series guide - stainless steel plate and precision bearing	106E/94	72.00
94 Series guide - large stainless steel mounting plate and precision bearing	106RB/94	94.50
94 Series guide - stainless steel angle plate with adjustable precision bearing	106A/94	74.50
94 Series guide - square mounting plate	104W/94PR	40.50

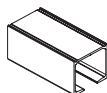


## Door stops and accessories

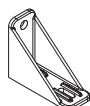
Description	Code	Price
Track mounted door stop for Single Run 80 or Single Run 120	120DS	59.00
Door collector kit	924-DC	26.00



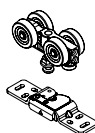
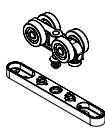
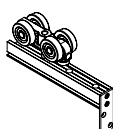
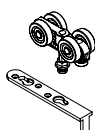
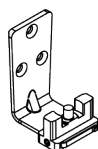
# Brio Pro Run 200

200F  
TRACK

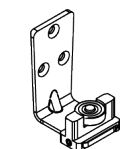
1SS/250 BRACKET



5SS/250 BRACKET

57SS/M  
HANGER58SS/M  
HANGER61SS/M  
HANGER52SS/M  
HANGER56SS/ML  
HANGER57SS/MN  
HANGER200-DS  
DOOR STOP200-SC  
SOFT CLOSE

106AT GUIDE



106A/94 GUIDE

94PPA CHANNEL  
23mm x 25mm

Maximum door weight	200kg
Minimum door thickness	40mm

## Tracks

Description	Code	Price
2m aluminium Pro Run 200 track type F - anodised finish	200F-A20	180.00
3m aluminium Pro Run 200 track type F - anodised finish	200F-A30	276.00
4m aluminium Pro Run 200 track type F - anodised finish	200F-A40	363.00
6m aluminium Pro Run 200 track type F - anodised finish	200F-A60	545.00

## Track brackets - for wall fixing track

Description	Code	Price
Heavy duty bracket - cast stainless steel	1SS/250	57.00
Heavy duty bracket for hanging two lines of track - cast stainless steel	5SS/250	176.00

## Door hangers - pair

Description	Code	Price
Timber and metal panels - surface mount (quick fix)	57SS/M	570.00
Timber and metal panels - recessed mount	58SS/M	675.00
Timber and metal panels - zero clearance	61SS/M	675.00
Timber panels - angle frame	52SS/M	675.00
Metal panel - long bolt	56SS/ML	570.00
Timber and metal panels - surface mount	57SS/MN	570.00

## Door stop

Description	Code	Price
Dampener stop for panel weight up to 200kg	200-DS	72.00

## Soft close

Description	Code	Price
Soft close for panel weight up to 200kg	200-SC	225.00

## Guides

Description	Code	Price
Adjustable guide for multiple panels	106AT	57.50
Adjustable guide for aluminium panels	105AA	40.50
94 Series guide - small mounting plate	104W/94PR	40.50
94 Series guide - large stainless steel mounting plate and precision bearing	106RB/94	94.50
94 Series guide - stainless steel angle plate with adjustable precision bearing	106A/94	74.50
94 Series guide - corner fix	21RB/94	136.00

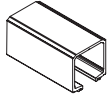
## Guide channels

Description	Code	Price
2m 94 Series polypropylene channel with aluminium support - anodised finish	94PPA-A20	89.00
3m 94 Series polypropylene channel with aluminium support - anodised finish	94PPA-A30	133.00
4m 94 Series polypropylene channel with aluminium support - anodised finish	94PPA-A40	164.00
6m 94 Series polypropylene channel with aluminium support - anodised finish	94PPA-A60	243.00

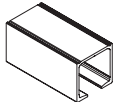
# Brio Pro Run 400

Maximum door weight	400kg
Minimum door thickness	40mm

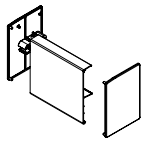
## Tracks (Type E)



400E TRACK



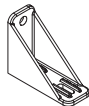
400F TRACK



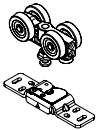
403E FASCIA



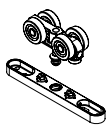
1SS/250 BRACKET



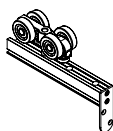
5SS/250 BRACKET



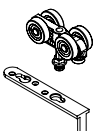
57SS/M HANGER



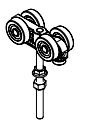
58SS/M HANGER



61SS/M HANGER



52SS/M HANGER



56SS/ML HANGER



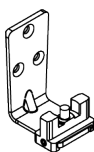
57SS/MN HANGER



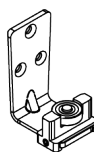
400-DS DOOR STOP



300-SC SOFT CLOSE



106AT GUIDE



106A/94 GUIDE



94PPA CHANNEL  
23mm x 25mm

Description	Code	Price
2m aluminium Pro Run 400 track type E – anodised finish	400E-A20	239.00
3m aluminium Pro Run 400 track type E – anodised finish	400E-A30	363.00
4m aluminium Pro Run 400 track type E – anodised finish	400E-A40	467.00
6m aluminium Pro Run 400 track type E – anodised finish	400E-A60	700.00

## Tracks (Type F)

Description	Code	Price
2m aluminium Pro Run 400 track type F – anodised finish	400F-A20	239.00
3m aluminium Pro Run 400 track type F – anodised finish	400F-A30	363.00
4m aluminium Pro Run 400 track type F – anodised finish	400F-A40	467.00
6m aluminium Pro Run 400 track type F – anodised finish	400F-A60	700.00

## Fascia

Description	Code	Price
2m aluminium – anodised finish with end caps	403E-20CA	205.00
3m aluminium – anodised finish with end caps	403E-30CA	280.00
4m aluminium – anodised finish with end caps	403E-40CA	344.00
4m aluminium – anodised finish with end caps	403E-60CA	479.00

Fascia only compatible with E type tracks

## Track brackets - for wall fixing track

Description	Code	Price
Heavy duty bracket – cast stainless steel	1SS/250	57.00
Heavy duty bracket for hanging two lines of track – cast stainless steel	5SS/250	176.00

## Door hangers - pair

Description	Code	Price
Timber and metal panels – surface mount	57SS/M	570.00
Timber and metal panels – recessed mount	58SS/M	675.00
Timber and metal panels – zero clearance	61SS/M	675.00
Timber panels – angle frame	52SS/M	675.00
Metal panel – long bolt	56SS/ML	570.00
Timber and metal panels – surface mount	57SS/MN	570.00

## Door stop

Description	Code	Price
Dampener stop for panel weight from 201kg to 400 kg	400-DS	72.00

## Soft close

Description	Code	Price
Soft close for panel weight from 201kg to 300 kg	300-SC	290.00

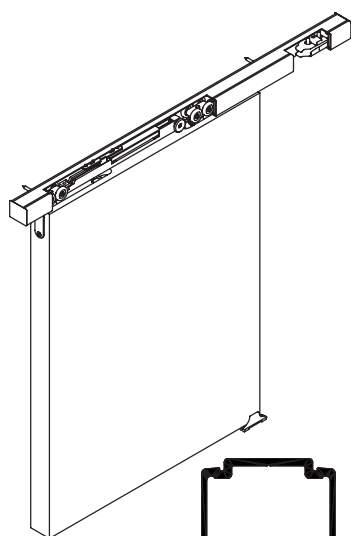
## Guides

Description	Code	Price
Adjustable guide for multiple panels	106AT	57.50
Adjustable guide for aluminium panels	105AA	40.50
94 Series guide – small mounting plate	104W/94PR	40.50
94 Series guide – large stainless steel mounting plate and precision bearing	106RB/94	94.50
94 Series guide – stainless steel angle plate with adjustable precision bearing	106A/94	74.50
94 Series guide – corner fix	21RB/94	136.00

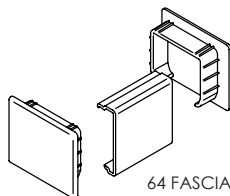
## Guide channels

Description	Code	Price
2m 94 Series polypropylene channel with aluminium support – anodised finish	94PPA-A20	89.00
3m 94 Series polypropylene channel with aluminium support – anodised finish	94PPA-A30	133.00
4m 94 Series polypropylene channel with aluminium support – anodised finish	94PPA-A40	164.00
6m 94 Series polypropylene channel with aluminium support – anodised finish	94PPA-A60	243.00

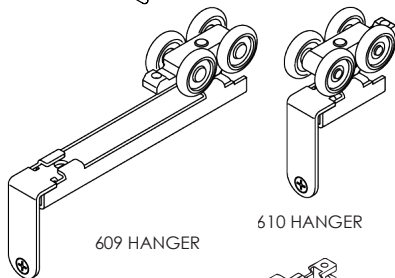
# Brio Zero Clearance 60



60A TRACK  
31mm x 30mm

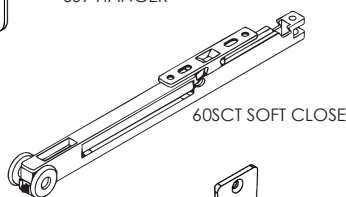


64 FASCIA



609 HANGER

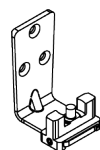
610 HANGER



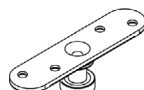
60SCT SOFT CLOSE



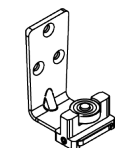
101N GUIDE



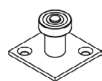
106AT GUIDE



106E/94 GUIDE



106A/94 GUIDE



104W/94 GUIDE



94PPA CHANNEL  
23mm x 25mm

Maximum door weight	60kg
Minimum door thickness	28mm

Sets – include track and fittings for one door

Description	Code	Price
Kit suitable for one door, kit comprises: 2m length of aluminium track, two door hangers, two track mounted door stops, one sawcut guide and installation instructions.	ZC60-20/1	238.00
Kit suitable for one door, kit comprises: 3m length of aluminium track, two door hangers, two track mounted door stops, one sawcut guide and installation instructions.	ZC60-30/1	266.00

Fittings pack

Description	Code	Price
Fittings pack with all items needed to hang one door (excluding track), pack comprises of two door hangers, two door stops, one sawcut guide and installation instructions.	ZC60-1PK	178.00

Tracks

Description	Code	Price
2m aluminium – mill finish	60A-20	66.00
3m aluminium – mill finish	60A-30	98.00
4m aluminium – mill finish	60A-40	126.00
6m aluminium – mill finish	60A-60	164.00

Fascia

Description	Code	Price
2m Fascia and end cap set for Zero Clearance 60 – powder coated white	64-20PWT	144.00
3m Fascia and end cap set for Zero Clearance 60 – powder coated white	64-30PWT	217.00
2m Fascia and end cap set for Zero Clearance 60 – anodised	64-20CA	144.00
3m Fascia and end cap set for Zero Clearance 60 – anodised	64-30CA	217.00

Door hangers - for timber doors (always use two per door)

Description	Code	Price
Zero Clearance 60 hanger for use with 60CS clip stop	609	67.00
Zero Clearance 60 hanger for use with 60SCT soft close	610	67.00

Door stops and accessories

Description	Code	Price
Track mounted clip stop	60CS	20.00
Soft close unit	60SCT	86.50

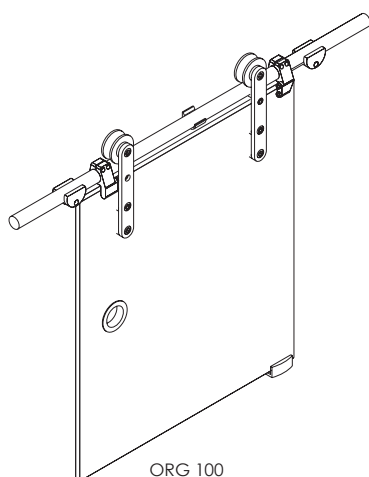
Guides

Description	Code	Price
Sawcut guide – nylon – floor mounted	101N	6.50
Adjustable guide for multiple panels	106AT	57.50
94 Series guide – stainless steel plate and precision bearing	106E/94	72.00
94 Series guide – large stainless steel mounting plate and precision bearing	106RB/94	94.50
94 Series guide – stainless steel angle plate with adjustable precision bearing	106A/94	74.50
94 Series guide – square mounting plate	104W/94PR	40.50

Guide channels

Description	Code	Price
2m 94 Series polypropylene channel with aluminium support – anodised finish	94PPA-A20	89.00
2.5m 94 Series polypropylene channel with aluminium support – anodised finish	94PPA-A25	114.00
3m 94 Series polypropylene channel with aluminium support – anodised finish	94PPA-A30	133.00
4m 94 Series polypropylene channel with aluminium support – anodised finish	94PPA-A40	164.00
5m 94 Series polypropylene channel with aluminium support – anodised finish	94PPA-A50	207.00
6m 94 Series polypropylene channel with aluminium support – anodised finish	94PPA-A60	243.00

# Brio Open Round Rail Glass 100



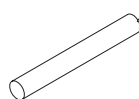
Maximum door weight	100kg
Maximum door height	3m
Glass thickness	8, 10 or 12mm

## Tracks

Description	Code	Price
2m Round rail with end caps - stainless steel	100OR-20	340.00
2.5m Round rail with end caps - stainless steel	100OR-25	424.00
3m Round rail with end caps - stainless steel	100OR-30	515.00
4m Round rail with end caps - stainless steel	100OR-40	680.00
2m Round rail with end caps - PVD black	100OR-20PR	460.00
2.5m Round rail with end caps - PVD black	100OR-25PR	575.00
3m Round rail with end caps - PVD black	100OR-30PR	690.00

## Additional wall mounting brackets

Description	Code	Price
<b>None required for 2m track, one for 2.5m track, two for 3m track and four for 4m track</b>		
Support bracket for Open Round Rail Glass 100 system - stainless steel	100-RB	44.50
Support bracket for Open Round Rail Glass 100 system - PVD black	100-RBPR	64.00



100OR RAIL

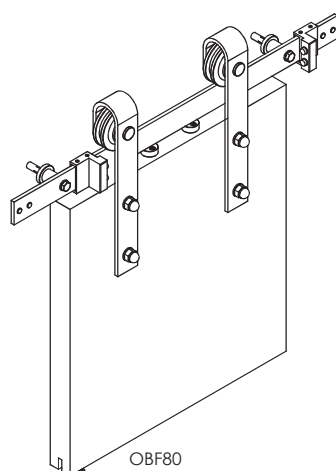


100-RB BRACKET

## Fittings packs

Description	Code	Price
<b>Pack includes two door hangers, two doorstops, one guide, brackets and fixings</b>		
Open Round Rail Glass 100 - fittings pack - stainless steel	ORG100	970.00
Open Round Rail Glass 100 - fittings pack - PVD black	ORG100PR	1,310.00

# Brio Open Bar Rail Timber 80



Maximum door weight	80kg
Maximum door width	1.1m
Door thickness	35-44mm

Sets - includes track and fittings for one door

Description	Code	Price
Open Bar Rail 80 kit - 2m powder coated black	OBF80-20PB	469.00
Open Bar Rail 80 kit - 2.5m powder coated black	OBF80-25PB	585.00
Open Bar Rail 80 kit - 2m stainless steel	OBF80-20	690.00
Open Bar Rail 80 kit - 2.5m stainless steel	OBF80-25	860.00

## Rail joiners

Description	Code	Price
Open Bar Rail 80 joining bracket - powder coated black	80B-JBPB	18.00
Open Bar Rail 80 joining bracket - stainless steel	80B-JB	26.50

## Wall bracket spacer discs

Description	Code	Price
<b>Use five for 2m rail, 6 for 2.5 rail</b>		
Open Bar Rail 80 14mm spacer disc (use behind wall mounting brackets) - powder coated black	OBF80-PACKERPBK	7.00
Open Bar Rail 80 14mm spacer disc (use behind wall mounting brackets) - stainless steel	OBF80-PACKERSS	11.50

## Guides

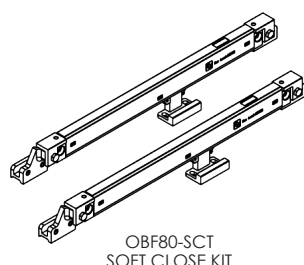
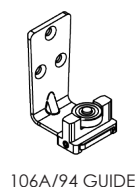
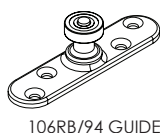
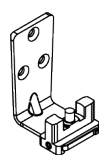
Description	Code	Price
Stainless steel sawcut guide - stainless steel	531T	46.00
Stainless steel sawcut guide - PVD black finish	531TPR	61.00
Adjustable guide for multiple panels	106AT	57.50
94 Series guide - stainless steel plate and precision bearing	106E/94	72.00
94 Series guide - large stainless steel mounting plate and precision bearing	106RB/94	94.50
94 Series guide - stainless steel angle plate with adjustable precision bearing	106A/94	74.50
94 Series guide - square mounting plate	104W/94PR	40.50

## Guide channels

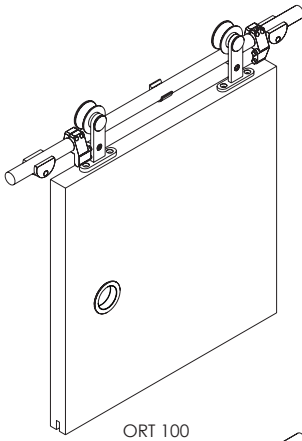
Description	Code	Price
2m 94 Series polypropylene channel - black	94P-20	27.50
2.5m 94 Series polypropylene channel - black	94P-25	33.50
3m 94 Series polypropylene channel - black	94P-30	43.50
4m 94 Series polypropylene channel - black	94P-40	51.50
5m 94 Series polypropylene channel - black	94P-50	61.50
6m 94 Series polypropylene channel - black	94P-60	77.50
2m 94 Series polypropylene channel with aluminium support - anodised finish	94PPA-A20	89.00
2.5m 94 Series polypropylene channel with aluminium support - anodised finish	94PPA-A25	114.00
3m 94 Series polypropylene channel with aluminium support - anodised finish	94PPA-A30	133.00
4m 94 Series polypropylene channel with aluminium support - anodised finish	94PPA-A40	164.00
5m 94 Series polypropylene channel with aluminium support - anodised finish	94PPA-A50	207.00
6m 94 Series polypropylene channel with aluminium support - anodised finish	94PPA-A60	243.00

## Accessories

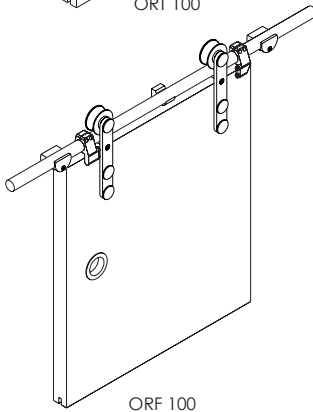
Description	Code	Price
Soft Close Kit - includes two soft close units for soft-close in both opening and closing directions	OBF80-SCT	221.00



# Brio Open Round Rail Timber 100



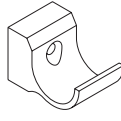
ORT 100



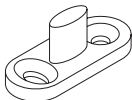
ORF 100



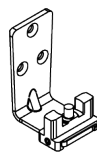
100-RB BRACKET



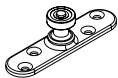
100F-RB BRACKET



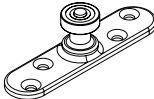
531T GUIDE



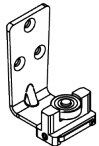
106AT GUIDE



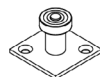
106E/94 GUIDE



106RB/94 GUIDE



106A/94 GUIDE



104W/94 GUIDE



94P CHANNEL  
20mm x 20mm



94PPA CHANNEL  
23mm x 25mm

Maximum door weight	100kg
Minimum door thickness	35-40mm

## Tracks

Description	Code	Price
2m Round rail with end caps - stainless steel	100OR-20	340.00
2.5m Round rail with end caps - stainless steel	100OR-25	424.00
3m Round rail with end caps - stainless steel	100OR-30	515.00
4m Round rail with end caps - stainless steel	100OR-40	680.00
2m Round rail with end caps - PVD black	100OR-20PR	460.00
2.5m Round rail with end caps - PVD black	100OR-25PR	575.00
3m Round rail with end caps - PVD black	100OR-30PR	690.00

## Fittings packs

Description	Code	Price
<b>Pack includes two door hangers, two doorstops, one guide, one flush pull, brackets and fixings</b>		
Open Round Rail Timber 100 - Top Fix - fittings pack - stainless steel	ORT100	790.00
Open Round Rail Timber 100 - Top Fix - fittings pack - PVD black	ORT100PR	1,060.00
Open Round Rail Timber 100 - Face Fix - fittings pack - stainless steel	ORF100	865.00
Open Round Rail Timber 100 - Face Fix - fittings pack - PVD black	ORF100PR	1,170.00

## Additional wall mounting brackets

Description	Code	Price
<b>None required for 2m track, one for 2.5m track, two for 3m track and four for 4m track</b>		
Support bracket for round rail (top fix system) - stainless steel	100-RB	44.50
Support bracket for round rail (top fix system) - PVD black	100-RBPR	64.00
Support bracket for round rail (face fix system) - stainless steel	100F-RB	58.00
Support bracket for round rail (face fix system) - PVD black	100F-RBPR	78.00

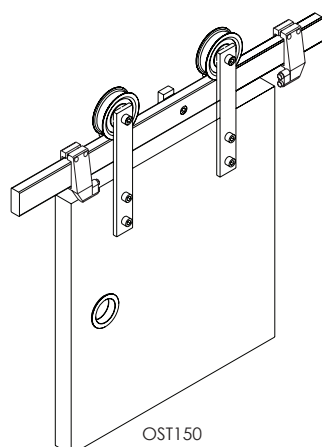
## Guides

Description	Code	Price
Stainless steel sawcut guide	531T	46.00
Stainless steel sawcut guide - PVD black finish	531TPR	61.00
Adjustable guide for multiple panels	106AT	57.50
94 Series guide - stainless steel plate and precision bearing	106E/94	72.00
94 Series guide - large stainless steel mounting plate and precision bearing	106RB/94	94.50
94 Series guide - stainless steel angle plate with adjustable precision bearing	106A/94	74.50
94 Series guide - square mounting plate	104W/94PR	40.50

## Guide channels

Description	Code	Price
2m 94 Series polypropylene channel - black	94P-20	27.50
2.5m 94 Series polypropylene channel - black	94P-25	33.50
3m 94 Series polypropylene channel - black	94P-30	43.50
4m 94 Series polypropylene channel - black	94P-40	51.50
5m 94 Series polypropylene channel - black	94P-50	61.50
6m 94 Series polypropylene channel - black	94P-60	77.50
2m 94 Series polypropylene channel with aluminium support - anodised finish	94PPA-A20	89.00
2.5m 94 Series polypropylene channel with aluminium support - anodised finish	94PPA-A25	114.00
3m 94 Series polypropylene channel with aluminium support - anodised finish	94PPA-A30	133.00
4m 94 Series polypropylene channel with aluminium support - anodised finish	94PPA-A40	164.00
5m 94 Series polypropylene channel with aluminium support - anodised finish	94PPA-A50	207.00
6m 94 Series polypropylene channel with aluminium support - anodised finish	94PPA-A60	243.00

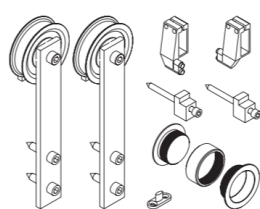
# Brio Open Square Rail Timber 150



Maximum door weight	150kg
Minimum door thickness	35-44mm

## Tracks

Description	Code	Price
2m Square rail with end caps - stainless steel	150SR-20	1,020.00
2.5m Square rail with end caps - stainless steel	150SR-25	1,130.00
3m Square rail with end caps - stainless steel	150SR-30	1,410.00
4m Square rail with end caps - stainless steel	150SR-40	1,810.00
2m Square rail with end caps - PVD black	150SR-20PR	1,440.00
2.5m Square rail with end caps - PVD black	150SR-25PR	1,820.00
3m Square rail with end caps - PVD black	150SR-30PR	1,930.00

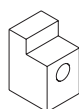


## Fittings packs

Description	Code	Price
<b>Pack includes two door hangers, two doorstops, one guide, one flush pull, brackets and fixings</b>		
Open Square Rail 150 fittings pack - stainless steel	OST150	1,350.00
Open Square Rail 150 fittings pack - PVD black	OST150PR	1,830.00

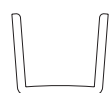
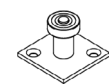
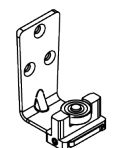
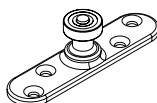
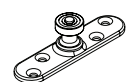
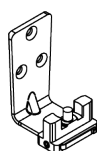
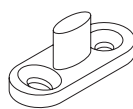
## Additional wall mounting brackets

Description	Code	Price
<b>None required for 2m track, one for 2.5m track, two for 3m track and four for 4m track</b>		
Wall fixing bracket for square rail - stainless steel	150-SB	127.00
Wall fixing bracket for square rail - PVD black	150-SBPR	169.00



## Guides

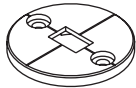
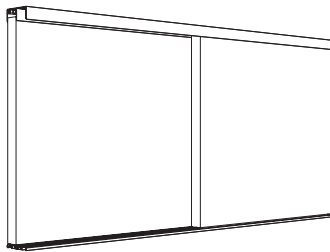
Description	Code	Price
Stainless steel sawcut guide - stainless steel	531T	46.00
Stainless steel sawcut guide - PVD black	531TPR	61.00
Adjustable guide for multiple panels	106AT	57.50
94 Series guide - stainless steel plate and precision bearing	106E/94	72.00
94 Series guide - large stainless steel mounting plate and precision bearing	106RB/94	94.50
94 Series guide - stainless steel angle plate with adjustable precision bearing	106A/94	74.50
94 Series guide - square mounting plate	104W/94PR	40.50



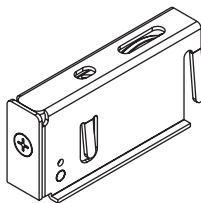
## Guide channels

Description	Code	Price
2m 94 Series polypropylene channel - black	94P-20	27.50
2.5m 94 Series polypropylene channel - black	94P-25	33.50
3m 94 Series polypropylene channel - black	94P-30	43.50
4m 94 Series polypropylene channel - black	94P-40	51.50
5m 94 Series polypropylene channel - black	94P-50	61.50
6m 94 Series polypropylene channel - black	94P-60	77.50
2m 94 Series polypropylene channel with aluminium support - anodised finish	94PPA-A20	89.00
2.5m 94 Series polypropylene channel with aluminium support - anodised finish	94PPA-A25	114.00
3m 94 Series polypropylene channel with aluminium support - anodised finish	94PPA-A30	133.00
4m 94 Series polypropylene channel with aluminium support - anodised finish	94PPA-A40	164.00
5m 94 Series polypropylene channel with aluminium support - anodised finish	94PPA-A50	207.00
6m 94 Series polypropylene channel with aluminium support - anodised finish	94PPA-A60	243.00

# Brio Wardrobe Roll 50



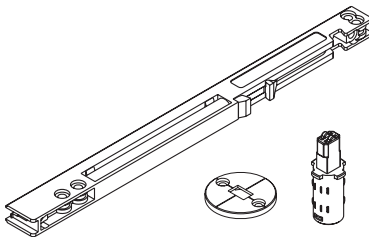
50G GUIDE DISC



50WR ROLLER



53C SILL COVER CLIP



50SCL SOFT CLOSE KIT



53 SILL EXTRUSION



55 HEAD EXTRUSION



56 SILL COVER

Maximum door weight	50kg
Door thickness	30-40mm

## Kit sets

Description	Finishes			Price
	Black Anodised	Clear Anodised	White	
1.2m Double kit suitable for two doors		WR50-12/2CA	WR50-12/2PWT	177.00
	WR50-12/2BA			240.00
1.5m Double kit suitable for two doors		WR50-15/2CA	WR50-15/2PWT	190.00
	WR50-15/2BA			256.00
1.8m Double kit suitable for two doors		WR50-18/2CA	WR50-18/2PWT	208.00
	WR50-18/2BA			281.00
2.4m Double kit suitable for three doors		WR50-24/3CA	WR50-24/3PWT	246.00
	WR50-24/3BA			332.00

## Kit sets - including soft close

Description	Finishes			Price
	Black Anodised	Clear Anodised	White	
1.2m Double kit suitable for two doors		WR50L-12/2CA	WR50L-12/2PWT	287.00
	WR50L-12/2BA			387.00
1.5m Double kit suitable for two doors		WR50L-15/2CA	WR50L-15/2PWT	301.00
	WR50L-15/2BA			407.00
1.8m Double kit suitable for two doors		WR50L-18/2CA	WR50L-18/2PWT	319.00
	WR50L-18/2BA			430.00
2.4m Double kit suitable for three doors		WR50L-24/3CA	WR50L-24/3PWT	411.00
	WR50L-24/3BA			555.00

Soft close kits include 1x soft close unit per door

## Fittings pack

Description	Code	Price
Fittings pack containing two adjustable rollers, two guides to hang one door and eight sill cover clips	WR50-1PK	41.50

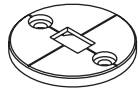
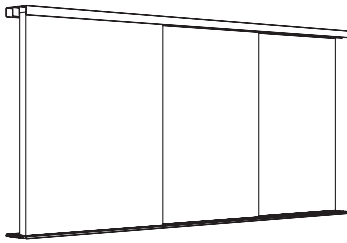
## Components and accessories

Description	Code	Price
Guide Disc	50G	2.60
Wardrobe Roll 50 Bottom Roller	50WR	17.50
Sill Cover Clip - 8 pack	53C/8	27.00
Soft close kit (for one door, soft closing in one direction) up to 20kg door	50SCL	55.00

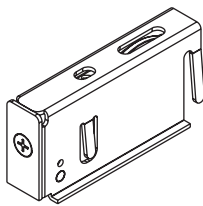
## Extrusions

Description	Finishes			Price
	Black Anodised	Clear Anodised	White	
3.8m Double sill extrusion		53-A38	53-38PWT	109.00
3.8m Double head extrusion		55-A38	55-38PWT	159.00
3.8m Sill cover extrusion		56-A38	56-38PWT	22.50
5m Double sill extrusion		53-A50	53-50PWT	142.00
	53-BA50			193.00
5m Double head extrusion		55-A50	55-50PWT	209.00
	55-BA50			282.00
5m Sill cover extrusion		56-A50	56-50PWT	30.00
	56-BA50			41.00

# Brio Wardrobe Roll Trio 50



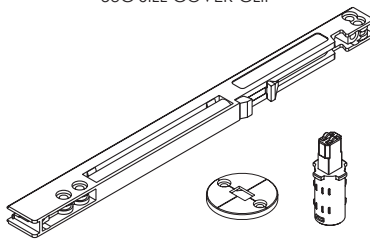
50G GUIDE DISC



50WR ROLLER



53C SILL COVER CLIP



50SCL SOFT CLOSE KIT



57 SILL EXTRUSION



58 HEAD EXTRUSION



56 SILL COVER

Maximum door weight	50kg
Door thickness	30-40mm

## Kit sets

Description	Finishes			Price
	Black Anodised	Clear Anodised	White	
1.8m Trio kit suitable for three doors	WT50-18/3BA	WT50-18/3CA	WT50-18/3PWT	395.00
				535.00
2.1m Trio kit suitable for three doors	WT50-21/3BA	WT50-21/3CA	WT50-21/3PWT	421.00
				570.00
2.4m Trio kit suitable for three doors	WT50-24/3BA	WT50-24/3CA	WT50-24/3PWT	449.00
				605.00
2.7m Trio kit suitable for three doors	WT50-27/3BA	WT50-27/3CA	WT50-27/3PWT	480.00
				645.00

## Kit sets - including soft close

Description	Finishes			Price
	Black Anodised	Clear Anodised	White	
1.8m Trio kit with soft close suitable for three doors	WT50L-18/3BA	WT50L-18/3CA	WT50L-18/3PWT	560.00
				755.00
2.1m Trio kit with soft close suitable for three doors	WT50L-21/3BA	WT50L-21/3CA	WT50L-21/3PWT	585.00
				790.00
2.4m Trio kit with soft close suitable for three doors	WT50L-24/3BA	WT50L-24/3CA	WT50L-24/3PWT	615.00
				830.00
2.7m Trio kit with soft close suitable for three doors	WT50L-27/3BA	WT50L-27/3CA	WT50L-27/3PWT	640.00
				865.00

Soft close kits include 1x soft close unit per door

## Fittings pack

Description	Code	Price
Fittings pack containing two adjustable rollers, two guides to hang one door and eight sill cover clips	WR50-1PK	41.50

## Components and accessories

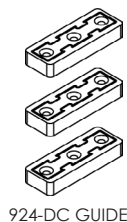
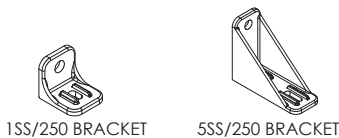
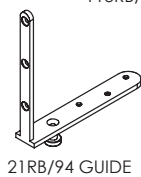
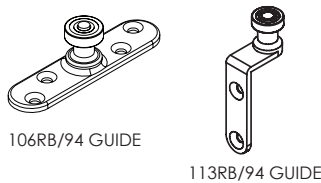
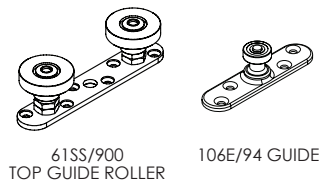
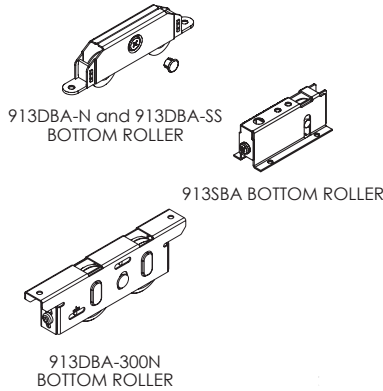
Description	Code	Price
Guide Disc	50G	2.60
Wardrobe Roll 50 Trio roller	50WR	17.50
Sill cover clip - 8 pack	53C/8	27.00
Soft close kit (for one door, soft closing in one direction) up to 20kg door	50SCL	55.00

## Extrusions

Description	Finishes			Price
	Black Anodised	Clear Anodised	White	
5m Triple sill extrusion	57-BA50	57-A50	57-50PWT	303.00
				410.00
5m Triple head extrusion	58-BA50	58-A50	58-50PWT	316.00
				425.00
5m Sill cover extrusion	56-BA50	56-A50	56-50PWT	30.00
				41.00

# Brio Timberoll

Maximum door weight	100kg / 170kg / 200kg / 300kg
Minimum door thickness	40mm



## Rollers

Description	Code	Price
Timberoll 100 double wheel - nylon self levelling roller with vertical adjustment	913DBA-N	85.00
Timberoll 170 single wheel - stainless steel roller with vertical adjustment	913SBA	90.00
Timberoll 200 double wheel - stainless steel self levelling double roller with vertical adjustment	913DBA-SS	150.00
Timberoll 300N double wheel - nylon self levelling double roller with vertical adjustment	913DBA-300N	232.00

## Surface mounted rails - suitable for Timberoll 100, 170, 200 and 300N rollers

Description	Code	Price
2m 913 Series rail - aluminium - anodised - drilled and countersunk	913A-A20	66.50
3m 913 Series rail - aluminium - anodised - drilled and countersunk	913A-A30	100.00
4m 913 Series rail - aluminium - anodised - drilled and countersunk	913A-A40	127.00
6m 913 Series rail - aluminium - anodised - drilled and countersunk	913A-A60	192.00
2m 913 Series rail - brass - drilled and countersunk	913B-20	210.00
3m 913 Series rail - brass - drilled and countersunk	913B-30	277.00
4m 913 Series rail - brass - drilled and countersunk	913B-40	410.00
6m 913 Series rail - brass - drilled and countersunk	913B-60	540.00

## Guides

Description	Code	Price
900 Series anti-rattle adjustable nylon roller with stainless steel top plate	61SS/900	265.00
94 Series guide - stainless steel plate and precision bearing - small plate	106E/94	72.00
94 Series guide - stainless steel plate and precision bearing - large plate	106RB/94	94.50
Corner plate fixing - stainless steel bearing - small cast stainless steel plate	113RB/94	70.00
Corner plate fixing - stainless steel bearing - large cast stainless steel plate	21RB/94	136.00

## Wall mounting brackets for 900 Series channel

Description	Code	Price
Wall fixed - single line - cast stainless steel	1SS/250	57.00
Wall fixed - double line - cast stainless steel	5SS/250	176.00

## Interlockers

Description	Code	Price
924 interlocker - clear anodised 2.4m (pack of two)	924-CA24	290.00
924 interlocker - clear anodised 4.8m	924-CA48	307.00
924 interlocker - black anodised 2.4m (pack of two)	924-BK24	354.00
924 interlocker - black anodised 4.8m	924-BK48	371.00
Door collector kit	924-DC	26.00

# Brio Guide channels

For straight sliding doors



92 CHANNEL  
9mm x 26mm



94 CHANNEL  
20mm x 21mm



94P CHANNEL  
20mm x 20mm



94PPA CHANNEL  
23mm x 25mm



96W CHANNEL  
15mm x 24mm



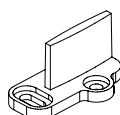
900 CHANNEL  
30mm x 46mm

## Guide channels

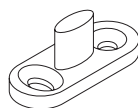
Description	Code	Price
92 Series 4m threshold guide channel - aluminium - anodised finish	92-A40	195.00
92 Series 6m threshold guide channel - aluminium - anodised finish	92-A60	262.00
94 Series 2m aluminium channel - anodised finish	94A-A20	56.50
94 Series 3m aluminium channel - anodised finish	94A-A30	71.00
94 Series 4m aluminium channel - anodised finish	94A-A40	115.00
94 Series 6m aluminium channel - anodised finish	94A-A60	141.00
94 Series 2m polypropylene channel - black	94P-20	27.50
94 Series 2.5m polypropylene channel - black	94P-25	33.50
94 Series 3m polypropylene channel - black	94P-30	43.50
94 Series 4m polypropylene channel - black	94P-40	51.50
94 Series 5m polypropylene channel - black	94P-50	61.50
94 Series 6m polypropylene channel - black	94P-60	77.50
94 Series 2m polypropylene channel with aluminium support - anodised finish	94PPA-A20	89.00
94 Series 2.5m polypropylene channel with aluminium support - anodised finish	94PPA-A25	114.00
94 Series 3m polypropylene channel with aluminium support - anodised finish	94PPA-A30	133.00
94 Series 4m polypropylene channel with aluminium support - anodised finish	94PPA-A40	164.00
94 Series 5m polypropylene channel with aluminium support - anodised finish	94PPA-A50	207.00
94 Series 6m polypropylene channel with aluminium support - anodised finish	94PPA-A60	243.00
96 Series 2m aluminium channel - anodised finish	96W-A20	67.00
96 Series 3m aluminium channel - anodised finish	96W-A30	101.00
96 Series 4m aluminium channel - anodised finish	96W-A40	133.00
96 Series 6m aluminium channel - anodised finish	96W-A60	202.00
900 Series 4m anodised aluminium guide channel	900A-A40	362.00
900 Series 6m anodised aluminium guide channel	900A-A60	540.00

# Brio Guides and accessories

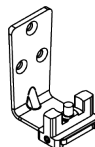
For straight sliding doors



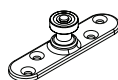
101N GUIDE



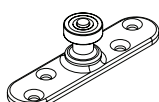
531T GUIDE



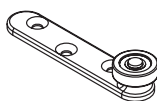
106AT GUIDE



106E/94 GUIDE



106RB/94 GUIDE



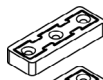
106SSMF GUIDE



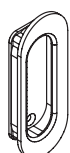
104W/94 GUIDE



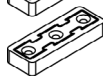
924 INTERLOCKER



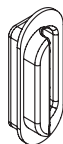
924-DC GUIDE



401 FLUSH PULL



924-DC GUIDE



401D FLUSH PULL



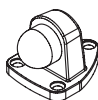
AQ21 FRAME SEAL



PS13B  
POLYPILE



PS16B  
POLYPILE



110SC DOOR STOP

## Guides

Description	Code	Price
Sawcut guide - nylon - floor mounted	101N	6.50
Stainless steel sawcut guide - stainless steel	531T	46.00
Stainless steel sawcut guide - PVD black	531TPR	61.00
92 Series spring loaded guide - stainless steel	801S	17.50
Adjustable guide for multiple panels	106AT	57.50
94 Series guide - stainless steel plate and precision bearing - small mounting plate	106E/94	72.00
94 Series guide - stainless steel plate and precision bearing - large mounting plate	106RB/94	94.50
94 Series guide - stainless steel angle plate with adjustable precision bearing	106A/94	74.50
96 Series guide - stainless steel plate and nylon tyred precision bearing	106SSMF	68.00
94 Series guide - square mounting plate	104W/94PR	40.50

## Interlockers

Description	Code	Price
924 interlocker - clear anodised 2.4m (pack of two)	924-CA24	290.00
924 interlocker - clear anodised 4.8m	924-CA48	307.00
924 interlocker - black anodised 2.4m (pack of two)	924-BK24	354.00
924 interlocker - black anodised 4.8m	924-BK48	371.00
Door collector kit	924-DC	26.00

## Flush pulls

Description	Code	Price
Flush pull - satin nickel (H105mm x W41mm x D11mm)	401SN	63.00
Flush pull with raised finger grip - satin nickel (H105mm x W41mm x D11mm)	401DSN	124.00
58mm Ø stainless steel pull - adjustable for 35-44mm thick doors	535T	140.00

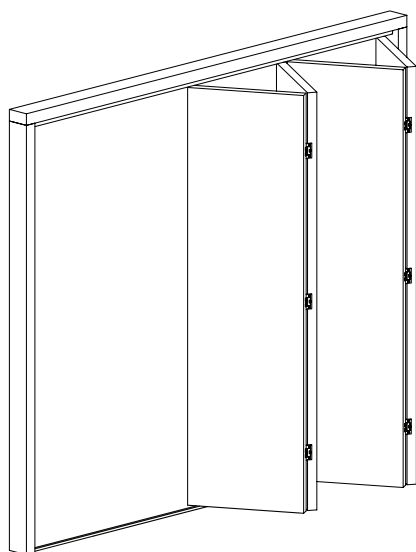
## Track and perimeter seals

Description	Code	Price
AQ21 frame seal - black - 1m unit	AQ21BL/1	9.70
AQ21 frame seal - white - 1m unit	AQ21W/1	9.70
13mm Track seal - 1m unit	PS13B/1	3.60
16mm Track seal - 1m unit	PS16B/1	4.80

## Floor / wall mounted door stop

Description	Code	Price
Door stop - satin chrome	110SC	25.00

# Brio Multifold 30



Maximum door leaf weight	30kg
Maximum door leaf height	2.4m
Maximum door leaf width	650mm
Minimum door leaf thickness	19mm

Sets - include track and fittings

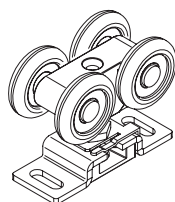
Description	Code	Price
Kit suitable for two door leaves, pack comprises: 1.3m length of track, one pivot set, one door hanger, one door stop, three flush hinges, one spanner, all screws and installation instructions.	MF30-13/2	152.00

Fittings packs

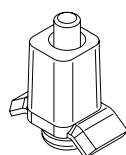
Description	Code	Price
Fittings pack with all items needed to hang two doors. Pack comprises: one pivot set, one door hanger, one door stop, three flush hinges, one spanner, all screws and installation instructions.	MF30-2PACK	137.00
Fittings pack with all items needed to hang four doors (moving in one direction). Pack comprises: one pivot set, two door hangers, one door stop, nine flush hinges, one spanner, all screws and installation instructions.	MF30-4PACK	242.00

Components

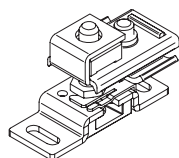
Description	Code	Price
1.3m aluminium track - mill finish	60A-13	47.00
2m aluminium track - mill finish	60A-20	64.00
3m aluminium track - mill finish	60A-30	95.00
4m aluminium track - mill finish	60A-40	122.00
6m aluminium track - mill finish	60A-60	159.00
Door Hanger - nylon body with top fixing plate	607	42.00
Track mounted door stop	60DS	10.00
Top pivot assembly	818	29.00
Bottom pivot	802	33.50
Wall bracket	806	28.50
Non mortice hinge 65 x 38 x 1.5mm - zinc plated steel with screws	282Z	9.50
Non mortice hinge 65 x 38 x 1.5mm - stainless steel with screws	282SS	16.00
Guide - spring loaded - for use with 92 threshold channel	801S	17.50
Spanner for 607 hanger	805-SPN	7.40
4m 92 Series threshold guide channel - aluminium - anodised finish	92-A40	195.00
6m 92 Series threshold guide channel - aluminium - anodised finish	92-A60	262.00
2m 96 Series aluminium channel - anodised finish	96W-A20	67.00
3m 96 Series aluminium channel - anodised finish	96W-A30	101.00
4m 96 Series aluminium channel - anodised finish	96W-A40	133.00
6m 96 Series aluminium channel - anodised finish	96W-A60	202.00
96 Series guide - stainless steel plate and nylon tyred precision bearing	106SSMF	68.00



607 HANGER



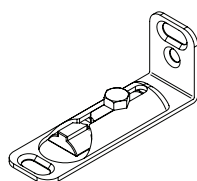
60DS DOOR STOP



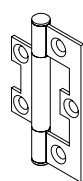
818 TOP PIVOT



802 BOTTOM PIVOT



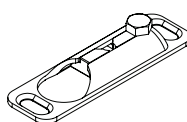
806 WALL BRACKET



282 HINGE



801S GUIDE

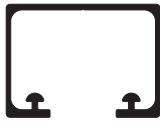


805 FLOOR BRACKET

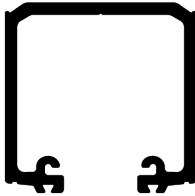


92 CHANNEL  
9mm x 26mm

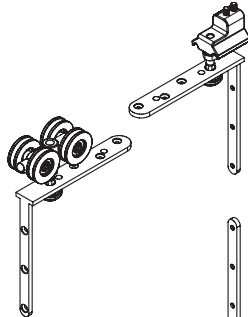
# Brio Pivotfold, Centrefold and Endfold



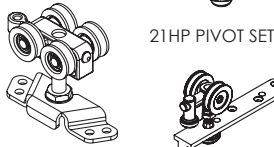
100 TRACK  
30mm x 41mm



350 TRACK  
50mm x 48mm



21/4 HANGER



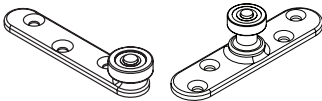
21HP PIVOT SET

35ENP HANGER



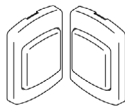
21HN HANGER

61/4 HANGER



106SSMF GUIDE

106RB/94 GUIDE



828

	35	75
Maximum door leaf weight	35kg	75kg
Maximum door leaf height	2.4m	3.3m
Maximum door leaf width	900mm	900mm
Maximum door leaf width (Centrefold)	920mm	1000mm
Door leaf thickness	35-50mm	44-50mm

## Tracks

Description	Code	Price	Code	Price
2m aluminium - anodised finish	100-A20	75.00	350-A20	246.00
3m aluminium - anodised finish	100-A30	109.00	350-A30	374.00
4m aluminium - anodised finish	100-A40	144.00	350-A40	481.00
6m aluminium - anodised finish	100-A60	214.00	350-A60	720.00

## Pivot sets - Pivotfold only

Description	Code	Price	Code	Price
Top and bottom pivot set - for use with bottom channel			21HP-C	439.00
Top and bottom pivot set - no bottom channel required	35EP	152.00	21HP	439.00

## Door hangers - Pivotfold and Endfold

Description	Code	Price	Code	Price
Two wheel end hanger			21HN	299.00
Four wheel end or intermediate hanger	35ENP	86.00	21/4HN	342.00

## Door hangers - Centrefold

Description	Code	Price	Code	Price
Four wheel end or intermediate hanger	35ENP	86.00	61/4HN	381.00

## Guides - Pivotfold and Endfold

Description	Code	Price	Code	Price
94 Series guide - stainless steel plate and precision bearing	106E/94	72.00	106RB/94	94.50
94 Series guide - stainless steel angle plate and precision bearing	113RB/94	70.00	21RB/94	136.00
96 Series guide - stainless steel plate and nylon tyred precision bearing	106SSMF	68.00		

## Guides - Centrefold

Description	Code	Price	Code	Price
94 Series guide - stainless steel plate and precision bearing	106E/94	72.00	106RB/94	94.50
96 Series guide - stainless steel plate and nylon tyred precision bearing	106SSMF	68.00		

## Accessories

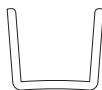
Description	Code	Price
Spanner for 57ENP and 35EP	M78-SPN	7.80
Surface mounted magnetic catch (two piece) - satin nickel	828SN	74.00
Surface mounted magnetic catch (two piece) - black	828PBK	74.00

# Brio Guide channels, hinges and accessories

For folding doors



94 CHANNEL  
20mm x 21mm



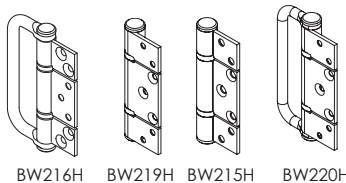
94P CHANNEL  
20mm x 20mm



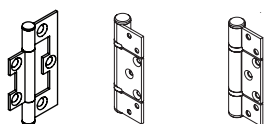
94PPA CHANNEL  
23mm x 25mm



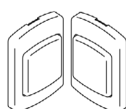
96W CHANNEL  
15mm x 24mm



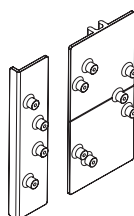
BW216H BW219H BW215H BW220H



282 HINGE 129HS 125HS



828



BW-DJH1

## Guide channels

Description	Code	Price
2m 94 Series aluminium channel - anodised finish	94A-A20	56.50
3m 94 Series aluminium channel - anodised finish	94A-A30	71.00
4m 94 Series aluminium channel - anodised finish	94A-A40	115.00
6m 94 Series aluminium channel - anodised finish	94A-A60	141.00
2m 94 Series polypropylene channel - black	94P-20	27.50
2.5m 94 Series polypropylene channel - black	94P-25	33.50
3m 94 Series polypropylene channel - black	94P-30	43.50
4m 94 Series polypropylene channel - black	94P-40	51.50
5m 94 Series polypropylene channel - black	94P-50	61.50
6m 94 Series polypropylene channel - black	94P-60	77.50
2m 94 Series polypropylene channel with aluminium support - anodised finish	94PPA-A20	89.00
2.5m 94 Series polypropylene channel with aluminium support - anodised finish	94PPA-A25	114.00
3m 94 Series polypropylene channel with aluminium support - anodised finish	94PPA-A30	133.00
4m 94 Series polypropylene channel with aluminium support - anodised finish	94PPA-A40	164.00
5m 94 Series polypropylene channel with aluminium support - anodised finish	94PPA-A50	207.00
6m 94 Series polypropylene channel with aluminium support - anodised finish	94PPA-A60	243.00
2m 96 Series aluminium channel - anodised finish	96W-A20	67.00
3m 96 Series aluminium channel - anodised finish	96W-A30	101.00
4m 96 Series aluminium channel - anodised finish	96W-A40	133.00
6m 96 Series aluminium channel - anodised finish	96W-A60	202.00

## Hinges - non-mortice

Description	Code	Price
Non mortice hinge 65 x 38 x 1.5mm - zinc plated steel with screws	282Z	9.50
Non mortice hinge 65 x 38 x 1.5mm - stainless steel with screws	282SS	16.00
Non mortice ball bearing hinge 85 x 57 x 2.5mm - satin stainless steel	125HS	61.50
Non mortice ball bearing hinge handle 85 x 57 x 2.5mm - satin stainless steel	126HS	65.50
Non mortice ball bearing offset hinge 85 x 57 x 2.5mm - satin stainless steel	129HS	61.50
Non mortice ball bearing offset hinge handle 85 x 57 x 2.5mm - satin stainless steel	1296HS	65.50
Non mortice ball bearing hinge 100 x 65 x 3mm - satin stainless steel	BW215HSS	66.50
Non mortice ball bearing hinge handle 100 x 65 x 3mm - satin stainless steel	BW216HSS	87.00
Non mortice ball bearing offset hinge 100 x 65 x 3mm - satin stainless steel	BW219HSS	66.50
Non mortice ball bearing offset hinge handle 100 x 65 x 3mm - satin stainless steel	BW220HSS	87.00

## Magnetic catches

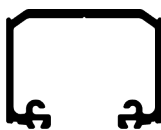
Description	Code	Price
Surface mounted magnetic catch (two piece) - satin nickel	828SN	74.00
Surface mounted magnetic catch (two piece) - black	828PBK	74.00

## Accessories

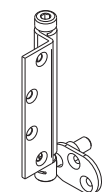
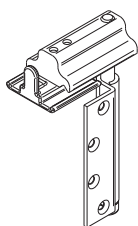
Description	Code	Price
Drilling jig for non-mortice hinges (Interfold 50 / 50F)	BW-DJH1	14.50

# Brio Weatherfold 4s Servery 35

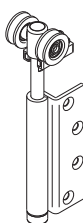
No bottom guide required - two panel or two + two panel layouts only



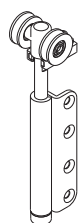
120A TRACK  
30mm x 41mm



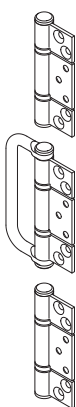
BWS1F-35H



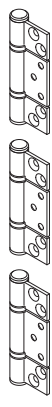
BWS2F-35SH



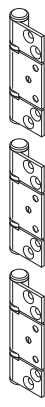
BWS2F-35SM



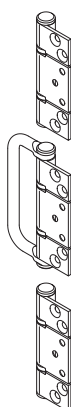
BW3-35H



BW5-35H



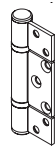
BW6-35H



BW7-35H



129HS



125HS

Maximum door leaf weight	35kg
Maximum door leaf height	1.8m
Maximum door leaf width	650mm
Minimum door leaf thickness	35mm

## Tracks

Description	Code	Price
2m aluminium - anodised finish	120A-A20	86.00
3m aluminium - anodised finish	120A-A30	131.00
4m aluminium - anodised finish	120A-A40	155.00
6m aluminium - anodised finish	120A-A60	237.00

## Pivot set - non-mortice

Description	Code	Price
<b>Sets consist of top pivot and jamb pivot</b>		
Pivot set - satin stainless steel	BWS1F-35HSS	314.00

## End door hanger - non-morticed

Description	Code	Price
<b>End hanger only</b>		
End hanger - satin stainless steel	BWS2F-35SHSS	200.00

## End door hanger - morticed (also suitable for rebated doors)

Description	Code	Price
<b>End hanger only</b>		
End hanger - satin stainless steel	BWS2F-35SMSS	209.00

## Hinge sets - non-mortice

Description	Code	Price
<b>Consists of three 85 x 57 x 2.5mm stainless steel fixed pin ball bearing hinges per set</b>		
Intermediate hinge set - two hinges and one hinge handle - satin stainless steel	BW3-35HSS	182.00
Intermediate hinge set - three hinges - satin stainless steel	BW5-35HSS	175.00
Offset hinge set - three hinges - satin stainless steel	BW6-35HSS	175.00
Offset hinge set - two hinges and one hinge handle - satin stainless steel	BW7-35HSS	182.00

## Single hinges - non-mortice

Description	Code	Price
<b>85 x 57 x 2.5mm stainless steel fixed pin ball bearing hinges</b>		
Intermediate hinge - satin stainless steel	125HS	61.50
Intermediate hinge handle - satin stainless steel	126HS	65.50
Offset hinge - satin stainless steel	129HS	61.50
Offset hinge handle - satin stainless steel	1296HS	65.50

# Brio Weatherfold 4s Window 35

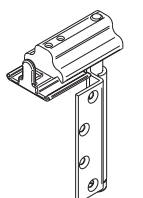
Bottom guide required



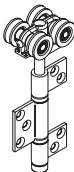
120A TRACK  
30mm x 41mm



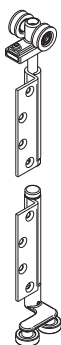
96W CHANNEL  
15mm x 24mm



BWS1F-35H



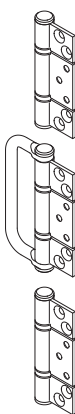
BWS4-35SH



BW2R-35SH



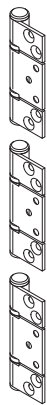
BWSR-35SM



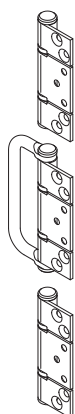
BW3-35H



BW5-35H



BW6-35H



BW7-35H

Maximum sash weight	35kg
Maximum sash height	1.8m
Maximum sash width	1m
Minimum sash thickness	35mm

## Tracks

Description	Code	Price
2m aluminium - anodised finish	120A-A20	86.00
3m aluminium - anodised finish	120A-A30	131.00
4m aluminium - anodised finish	120A-A40	155.00
6m aluminium - anodised finish	120A-A60	237.00

## Guide channels

Description	Code	Price
2m 96 Series aluminium channel - anodised finish	96W-A20	67.00
3m 96 Series aluminium channel - anodised finish	96W-A30	101.00
4m 96 Series aluminium channel - anodised finish	96W-A40	133.00
6m 96 Series aluminium channel - anodised finish	96W-A60	202.00

## Pivot set - non-mortice

Description	Code	Price
<b>Sets consist of top pivot and jamb pivot</b>		
Pivot set - satin stainless steel	BWS1F-35HSS	314.00

## Intermediate hanger set - non-mortice

Description	Code	Price
<b>Sets consist of hanger, guide and one hinge</b>		
Intermediate hanger set - satin stainless steel	BWS4-35SHSS	479.00

## End hanger sets - non-mortice

Description	Code	Price
<b>Sets consist of end hanger and guide</b>		
End hanger set - right - satin stainless steel	BWS2R-35SHSS	338.00
End hanger set - left - satin stainless steel	BWS2L-35SHSS	338.00

## End hanger sets - morticed (also suitable for rebated doors)

Description	Code	Price
<b>Sets consist of hanger and guide</b>		
End hanger set - right - satin stainless steel	BWS2R-35SMSS	368.00
End hanger set - left - satin stainless steel	BWS2L-35SMSS	368.00

## Hinge sets - non-mortice

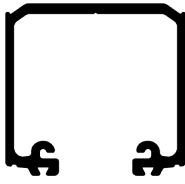
Description	Code	Price
<b>Sets consist of three 85 x 57 x 2.5mm stainless steel fixed pin ball bearing hinges per set</b>		
Intermediate hinge set - two hinges and one hinge handle - satin stainless steel	BW3-35HSS	182.00
Intermediate hinge set - inward opening - three hinges - satin stainless steel	BW5-35HSS	175.00
Offset hinge set - three hinges - satin stainless steel	BW6-35HSS	175.00
Offset hinge set - two hinges and one hinge handle - satin stainless steel	BW7-35HSS	182.00

## Single hinges - non-mortice

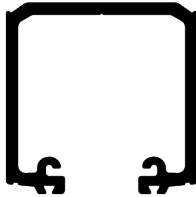
Description	Code	Price
<b>85 x 57 x 2.5mm stainless steel fixed pin ball bearing hinges</b>		
Intermediate hinge - satin stainless steel	125HS	61.50
Intermediate hinge handle - satin stainless steel	126HS	65.50
Offset hinge - satin stainless steel	129HS	61.50
Offset hinge handle - satin stainless steel	1296HS	65.50

# Brio Weatherfold 4s 50 and 100

For timber and aluminium doors - non-mortice hinges



180A TRACK  
45mm x 47mm



350 TRACK  
50mm x 48mm

Maximum leaf weight	50kg
Maximum leaf height	3m
Maximum leaf width	1m
Leaf thickness	35-68mm

100kg
3.3m
1m
35-68mm

## Tracks

Description	Code	Price
2m aluminium - anodised finish	180A-A20	185.00
2.5m aluminium - anodised finish	180A-A25	246.00
3m aluminium - anodised finish	180A-A30	284.00
4m aluminium - anodised finish	180A-A40	374.00
5m aluminium - anodised finish	180A-A50	461.00
6m aluminium - anodised finish	180A-A60	560.00

Code	Price
350-A20	246.00
350-A25	310.00
350-A30	374.00
350-A40	481.00
350-A50	595.00
350-A60	720.00

## Pivot sets - non-mortice

Description	Code	Price
<b>Sets consist of top and bottom pivots</b>		
Pivot set - satin stainless steel	BWS1-100HSS	471.00
Pivot set - PVD black	BWS1-100HPR	520.00

Code	Price
BWS1-100HSS	471.00
BWS1-100HPR	520.00

## Jamb pivots - non-mortice

Description	Code	Price
Jamb pivot - satin stainless steel	BW189HSS	178.00
Jamb pivot - PVD black	BW189HPR	196.00

Code	Price
BW189HSS	178.00
BW189HPR	196.00

## Intermediate door hanger sets - non-mortice

Description	Code	Price
<b>Sets consist of hanger, guide and one hinge</b>		
Intermediate hanger set - satin stainless steel	BWS4-50SHSS	705.00
Intermediate hanger set - PVD black	BWS4-50SHPR	775.00

Code	Price
BWS4-100SHSS	810.00
BWS4-100SHPR	875.00

## End door hanger sets - for rebated doors

Description	Code	Price
<b>Sets consist of top hanger and bottom guide</b>		
End hanger set - satin stainless steel	BWS2-50SHSS	630.00
End hanger set - PVD black	BWS2-50SHPR	690.00

Code	Price
BWS2-100SHSS	720.00
BWS2-100SHPR	805.00

## End door hanger sets - for rebated doors

Description	Code	Price
<b>Sets consist of top hanger and bottom guide</b>		
End hanger set for rebated doors - satin stainless steel	BWS2-50SRSS	630.00
End hanger set for rebated doors - PVD black	BWS2-50SRPR	690.00

Code	Price
BWS2-100SRSS	720.00
BWS2-100SRPR	805.00

## End door hanger sets - face mounted

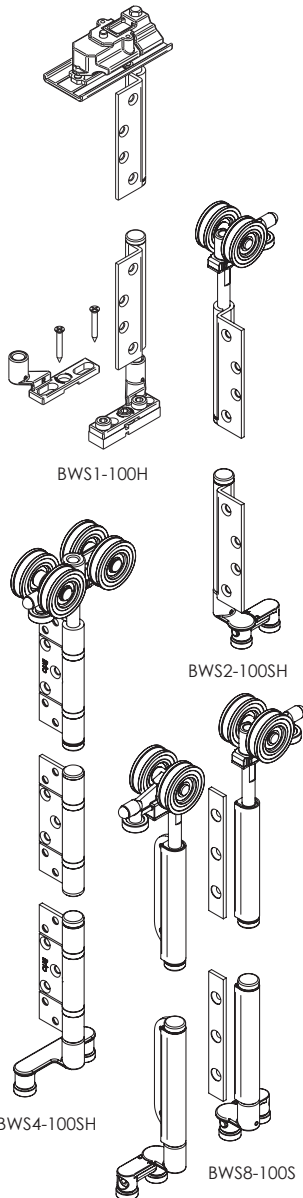
Description	Code	Price
<b>Sets consist of top hanger and bottom guide</b>		
End hanger set - satin stainless steel	BWS2-50SFSS	615.00

Code	Price
BWS2-100SFSS	705.00

## Meeting door hanger sets - for rebated doors

Description	Code	Price
<b>Sets consists of two hangers and two guides - one set for the rebated door and one set for surface mounting</b>		
Meeting rebated door set - satin stainless steel	BWS8-50SSS	1,230.00

Code	Price
BWS8-100SSS	1,410.00



BWS1-100H

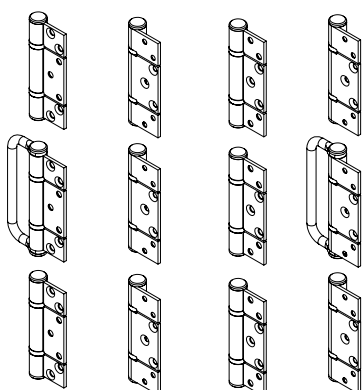
BWS2-100SH

BWS4-100SH

BWS8-100S

# Brio Weatherfold 4s 50 and 100

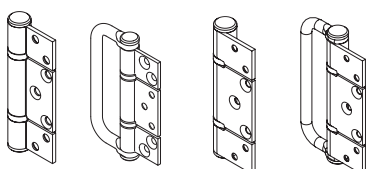
For timber and aluminium doors - non-mortice hinges



BW3-100H BW6-100H BW5-100H BW7-100H

## Hinge sets - 50 / 100kg non-mortice

Description	Code	Price
<b>100 x 65 x 3mm stainless steel fixed pin ball bearing hinges</b>		
Hinge set - two hinges and one hinge handle - satin stainless steel	BW3-100HSS	201.00
Hinge set - three hinges no hinge handle - satin stainless steel	BW5-100HSS	196.00
Offset hinge set - three hinges no hinge handle - satin stainless steel	BW6-100HSS	196.00
Offset hinge set - two hinges and one hinge handle - satin stainless steel	BW7-100HSS	203.00
Hinge set - two hinges and one hinge handle - PVD black	BW3-100HPR	222.00
Hinge set - three hinges no hinge handle - PVD black	BW5-100HPR	217.00
Offset hinge set - three hinges no hinge handle - PVD black	BW6-100HPR	217.00
Offset hinge set - two hinges and one hinge handle - PVD black	BW7-100HPR	222.00



BW215H BW216H BW219H BW220H

## Single hinges - 50 / 100kg non-mortice

Description	Code	Price
<b>100 x 65 x 3mm stainless steel fixed pin ball bearing hinges</b>		
Intermediate hinge - satin stainless steel	BW215HSS	66.50
Intermediate hinge handle - satin stainless steel	BW216HSS	87.00
Offset hinge - satin stainless steel	BW219HSS	66.50
Offset hinge handle - satin stainless steel	BW220HSS	87.00
Intermediate hinge - PVD black	BW215HPR	72.00
Intermediate hinge handle - PVD black	BW216HPR	96.00
Offset hinge - PVD black	BW219HPR	72.00
Offset hinge handle - PVD black	BW220HPR	96.00

## Guide channels



94 CHANNEL  
20mm x 21mm



94P CHANNEL  
20mm x 20mm

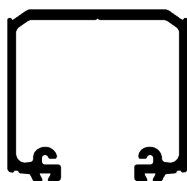


94PPA CHANNEL  
23mm x 25mm

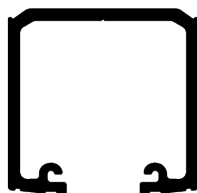
Description	Code	Price
2m 94 series aluminium channel - anodised finish	94A-A20	56.50
3m 94 series aluminium channel - anodised finish	94A-A30	71.00
4m 94 series aluminium channel - anodised finish	94A-A40	115.00
6m 94 series aluminium channel - anodised finish	94A-A60	141.00
2m 94 series polypropylene channel - black	94P-20	27.50
2.5m 94 series polypropylene channel - black	94P-25	33.50
3m 94 series polypropylene channel - black	94P-30	43.50
4m 94 series polypropylene channel - black	94P-40	51.50
5m 94 series polypropylene channel - black	94P-50	61.50
6m 94 series polypropylene channel - black	94P-60	77.50
2m 94 series polypropylene channel with aluminium support - anodised finish	94PPA-A20	89.00
2.5m 94 series polypropylene channel with aluminium support - anodised finish	94PPA-A25	114.00
3m 94 series polypropylene channel with aluminium support - anodised finish	94PPA-A30	133.00
4m 94 series polypropylene channel with aluminium support - anodised finish	94PPA-A40	164.00
5m 94 series polypropylene channel with aluminium support - anodised finish	94PPA-A50	207.00
6m 94 series polypropylene channel with aluminium support - anodised finish	94PPA-A60	243.00

# Brio Weatherfold 4s 50 and 100

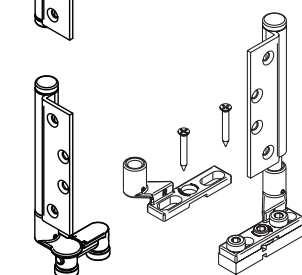
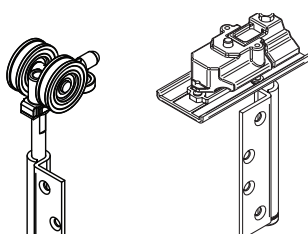
For timber doors – square mortice hinges



180A TRACK  
45mm x 47mm

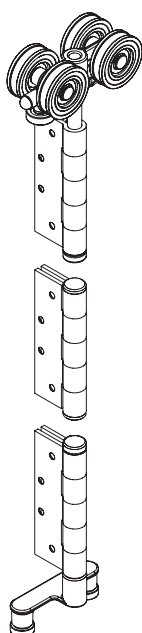


350 TRACK  
50mm x 48mm



BWS2-100SM

BWS1-100M



BWS4-100SM

Maximum door leaf weight	50kg
Maximum door leaf height	3m
Maximum door leaf width	1m
Door leaf thickness	35-68mm

100kg
3.3m
1m
35-68mm

## Tracks

Description	Code	Price
2m aluminium - anodised finish	180A-A20	185.00
2.5m aluminium - anodised finish	180A-A25	246.00
3m aluminium - anodised finish	180A-A30	284.00
4m aluminium - anodised finish	180A-A40	374.00
5m aluminium - anodised finish	180A-A50	461.00
6m aluminium - anodised finish	180A-A60	560.00

Code	Price
350-A20	246.00
350-A25	310.00
350-A30	374.00
350-A40	481.00
350-A50	595.00
350-A60	720.00

## Pivot sets - square mortice

Description	Code	Price
<b>Sets consist of top and bottom pivots</b>		
Pivot set - satin stainless steel	BWS1-100MSS	496.00
Pivot set - polished brass	BWS1-100MPB	580.00

Code	Price
BWS1-100MSS	496.00
BWS1-100MPB	580.00

## Jamb pivots - square mortice

Description	Code	Price
Jamb pivot - satin stainless steel	BW189MSS	188.00

Code	Price
BW189MSS	188.00

## Intermediate door hanger sets - square mortice

Description	Code	Price
<b>Sets consist of hanger, guide and one hinge</b>		
Intermediate hanger set - satin stainless steel	BWS4-50SMSS	780.00
Intermediate hanger set - polished brass	BWS4-50SMPB	970.00

Code	Price
BWS4-100SMSS	845.00
<b>BWS4-100SMPB</b>	1,010.00

## End door hanger sets - square mortice

Description	Code	Price
<b>Sets consist of top hanger and bottom guide</b>		
End hanger set - stainless steel	BWS2-50SMSS	655.00
End hanger set - polished brass	BWS2-50SMPB	780.00

Code	Price
BWS2-100SMSS	810.00
<b>BWS2-100SMPB</b>	950.00

## End door hanger sets - for rebated doors

Description	Code	Price
<b>Sets consist of top hanger and bottom guide</b>		
End hanger set for rebated doors - satin stainless steel	BWS2-50SRSS	630.00
End hanger set for rebated doors - polished brass	<b>BWS2-50SRPB</b>	710.00

Code	Price
BWS2-100SRSS	720.00
<b>BWS2-100SRPB</b>	845.00

## End door hanger sets - face mounted

Description	Code	Price
<b>Sets consist of top hanger and bottom guide</b>		
End hanger set - satin stainless steel	BWS2-50SFSS	615.00
End hanger set - polished brass	<b>BWS2-50SFPB</b>	705.00

Code	Price
<b>BWS2-100SFSS</b>	705.00
<b>BWS2-100SFPB</b>	850.00

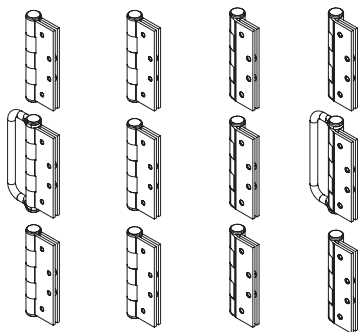
## Meeting door hanger sets - for rebated doors

Description	Code	Price
<b>Sets consists of two hangers and two guides - one set for the rebated door and one set for surface mounting</b>		
Meeting rebated door set - satin stainless steel	<b>BWS8-50SSS</b>	1,230.00
Meeting rebated door set - polished brass	<b>BWS8-50SPB</b>	1,280.00

Code	Price
<b>BWS8-100SSS</b>	1,410.00
<b>BWS8-100SPB</b>	1,620.00

# Brio Weatherfold 4s 50 and 100

For timber doors - square mortice hinges

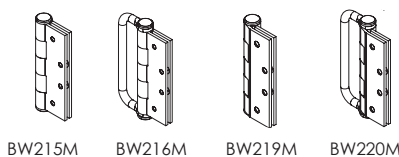


BW3-100M BW5-100M BW6-100M BW7-100M

## Hinge sets - 50 / 100kg - square mortice

Description	Code	Price
<b>100 x 65 x 3mm stainless steel fixed pin hinges</b>		
Intermediate hinge handle set - two hinges and one hinge handle - satin stainless steel	BW3-100MSS	228.00
Intermediate hinge set - three hinges - satin stainless steel	BW5-100MSS	210.00
Offset hinge set - three offset hinges - satin stainless steel	BW6-100MSS	205.00
Offset hinge set - two hinges and one hinge handle - satin stainless steel	BW7-100MSS	228.00
Intermediate hinge set - two hinges and one hinge handle - polished brass	BW3-100MPB	263.00
Intermediate hinge set - three hinges - polished brass	BW5-100MPB	263.00
Offset hinge set - three hinges - polished brass	BW6-100MPB	249.00
Offset hinge handle set - two hinges and one hinge handle - polished brass	BW7-100MPB	263.00

## Single hinges - 50 / 100kg - square mortice



BW215M BW216M BW219M BW220M

Description	Code	Price
<b>100 x 65 x 3mm stainless steel fixed pin hinges</b>		
Intermediate hinge - satin stainless steel	BW215MSS	78.00
Hinge handle - satin stainless steel	BW216MSS	86.00
Offset hinge - satin stainless steel	BW219MSS	82.50
Offset hinge handle - satin stainless steel	BW220MSS	102.00
Intermediate hinge only - polished brass	BW215MPB	90.00
Hinge handle - polished brass	BW216MPB	107.00
Offset hinge - polished brass	BW219MPB	90.00
Offset hinge handle - polished brass	BW220MPB	122.00



94P CHANNEL  
20mm x 20mm



94 CHANNEL  
20mm x 21mm



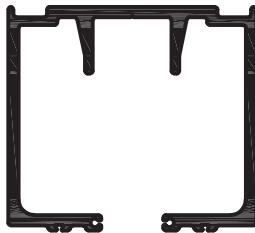
94PPA CHANNEL  
23mm x 25mm

## Guide channels

Description	Code	Price
2m 94 Series aluminium channel - anodised finish	94A-A20	56.50
3m 94 Series aluminium channel - anodised finish	94A-A30	71.00
4m 94 Series aluminium channel - anodised finish	94A-A40	115.00
6m 94 Series aluminium channel - anodised finish	94A-A60	141.00
2m 94 Series polypropylene channel - black	94P-20	27.50
2.5m 94 Series polypropylene channel - black	94P-25	33.50
3m 94 Series polypropylene channel - black	94P-30	43.50
4m 94 Series polypropylene channel - black	94P-40	51.50
5m 94 Series polypropylene channel - black	94P-50	61.50
6m 94 Series polypropylene channel - black	94P-60	77.50
2m 94 Series polypropylene channel with aluminium support - anodised finish	94PPA-A20	89.00
2.5m 94 Series polypropylene channel with aluminium support - anodised finish	94PPA-A25	114.00
3m 94 Series polypropylene channel with aluminium support - anodised finish	94PPA-A30	133.00
4m 94 Series polypropylene channel with aluminium support - anodised finish	94PPA-A40	164.00
5m 94 Series polypropylene channel with aluminium support - anodised finish	94PPA-A50	207.00
6m 94 Series polypropylene channel with aluminium support - anodised finish	94PPA-A60	243.00

# Brio Weatherfold 4s 150

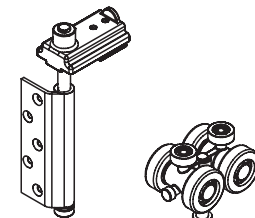
For timber and aluminium doors - non-mortice hinges



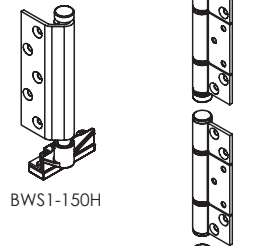
700  
87mm x 96mm



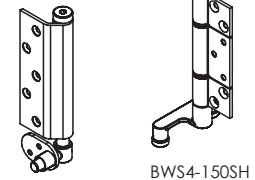
98PPA  
30mm x 25mm



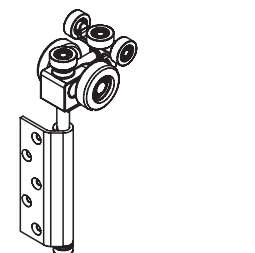
BWS1-150H



BWS4-150SH



BW789H



BWS2-150SH

Maximum leaf weight	150kg
Maximum leaf height	4m
Maximum leaf width	1.2m
Leaf thickness	44-68mm

## Tracks

Description	Code	Price
4m aluminium - anodised finish	<b>700-CA40</b>	2,470.00
6m aluminium - anodised finish	<b>700-CA60</b>	3,680.00

## Guide channels

Description	Code	Price
4m 98 Series polypropylene channel with aluminium support - anodised finish	<b>98PPA-A40</b>	555.00
6m 98 Series polypropylene channel with aluminium support - anodised finish	<b>98PPA-A60</b>	570.00

## Pivot set - non-mortice

Description	Code	Price
<b>Sets consist of top and bottom pivots</b>		
Pivot set - satin stainless steel	<b>BWS1-150HSS</b>	1,130.00

## Jamb pivot

Description	Code	Price
Jamb pivot - satin stainless steel	<b>BW789HSS</b>	369.00

## End door hanger set - non-mortice

Description	Code	Price
<b>Sets consist of top hanger and bottom guide</b>		
End hanger - satin stainless steel	<b>BWS2-150SHSS</b>	1,330.00

## Intermediate door hanger set - non-mortice

Description	Code	Price
<b>Sets consist of hanger, guide and one hinge</b>		
Intermediate hanger - satin stainless steel	<b>BWS4-150SHSS</b>	1,900.00

## Joining rod

Description	Code	Price
Track jointing rod - pair	<b>700TJR</b>	54.50

## Hinge sets - non-mortice

Description	Code	Price
<b>150 x 90 x 4mm stainless steel fixed pin ball bearing hinges</b>		
Intermediate hinge set - two hinges with one hinge handle - satin stainless steel	<b>BW3-150HSS</b>	850.00
Intermediate hinge set - three hinges - satin stainless steel	<b>BW5-150HSS</b>	590.00
Offset hinge set - three hinges - satin stainless steel	<b>BW6-150HSS</b>	605.00
Offset hinge set - two hinges with one hinge handle - satin stainless steel	<b>BW7-150HSS</b>	860.00

## Single hinges - non-mortice

Description	Code	Price
<b>150 x 90 x 4mm Stainless steel fixed pin ball bearing hinges</b>		
150 x 90 x 4mm Intermediate hinge only - satin stainless steel	<b>BW705HSS</b>	196.00
150 x 90 x 4mm Offset hinge only - satin stainless steel	<b>BW709HSS</b>	201.00

# Brio Weatherfold 4s accessories



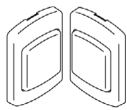
PS13B POLYPILE



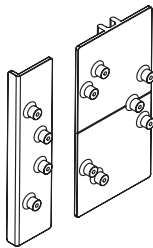
AQ21 FRAMESEAL



AQ63



828



BW-DJH1

## Track, frame and perimeter seals

Description	Code	Price
13mm Track seal - 1m unit	PS13B/1	3.60
AQ21 frame seal - black - 1m unit	AQ21BL/1	9.70
AQ21 frame seal - white - 1m unit	AQ21W/1	9.70
AQ48 door seal - black - 1m unit	AQ48BL/1	9.70
AQ48 door seal - white - 1m unit	AQ48W/1	9.70
AQ63 door seal - black - 1m unit	AQ63BL/1	9.70
AQ63 door seal - white - 1m unit	AQ63W/1	9.70

## Magnetic catches

Description	Code	Price
Surface mounted magnetic catch (2 piece) - satin nickel	828SN	74.00
Surface mounted magnetic catch (2 piece) - black	828PBK	74.00

## Accessories

Description	Code	Price
Drilling jig for non-mortice hinges	BW-DJH1	14.50

# Brio Flush bolts



456

## 456 - Square top flush bolts

Description	Code	Price
190mm 456 Flush bolt - satin nickel	456SN	243.00
450mm 456 Flush bolt - satin nickel	456LSN	385.00
600mm 456 Flush bolt - satin nickel	456LXSN-600	830.00



456E

## 456E - Square top lockable flush bolt

Description	Code	Price
190mm 456 Lockable flush bolt - satin nickel	456ESN-1	342.00



456N

## 456N - Square top necked flush bolt

Description	Code	Price
190mm 456 Necked flush bolt - satin nickel	456NSN	303.00



456R

## 456R - Round top standard flush bolts

Description	Code	Price
190mm 456R Flush bolt - satin nickel	456RSN	243.00
450mm 456R Flush bolt - satin nickel	456RLSN	385.00
190mm 456R Flush bolt - polished brass	456RPVDB	279.00
450mm 456R Flush bolt - polished brass	456RLPVDB	440.00
190mm 456R Flush bolt - PVD black	456RPVDR	266.00



456RE

## 456RE - Round top lockable flush bolt

Description	Code	Price
190mm 456R Lockable flush bolt - satin nickel	456RESN-1	342.00



456RN

## 456RN - Round top necked flush bolt

Description	Code	Price
190mm 456R Necked flush bolt - satin nickel	456RNSN	303.00



360

## 360 - Flush bolts

Description	Code	Price
110mm 360 Flush bolt - satin nickel	360SN	151.00
300mm 360 Flush bolt - satin nickel	360LSN	277.00



360E

## 360E - Lockable flush bolts

Description	Code	Price
110mm 360 Lockable flush bolt - satin nickel	360ESN-1	205.00
110mm 360 Lockable flush bolt - polished brass	360EPVDB-1	205.00



360N

## 360N - Necked flush bolts

Description	Code	Price
110mm 360 Necked flush bolt - satin nickel	360NSN	181.00
110mm 360 Necked flush bolt - polished brass	360NPVDB	181.00

## Flush bolt accessories



456 ROUTER

Description	Code	Price
Router bit for 456 flush bolt	ROUTER	420.00
Router bit for 360 flush bolt	ROUTER360	265.00
Replacement keeper for 360 and 456 flush bolts	456RKS	44.00

# Brio 286 Dual Point Lock

Compatible with non-mortice Brio Weatherfold 4s, 50 and 100 door systems

## Lock body

Description	Code	Price
286 Dual point lock body for timber doors, 35mm backset	286T-35	152.00
286 Dual point lock body for timber doors, 45mm backset	286T-45	152.00
286 Dual point lock body for aluminium doors	286AV	127.00
286 Dual access lock body for aluminium doors	286ADV	143.00

## Rod kits

Description	Code	Price
<b>Kit consists of top and bottom rods, fixing cleats, hinge blocks (where necessary) and cover strip</b>		
Timber door intermediate panel rod kit for panel heights between 1.3m and 2.5m (includes three hinge blocks)	286-25HS	535.00
Timber door intermediate panel rod kit for panel heights between 2.5m and 3.5m (includes four hinge blocks)	286-35HS	625.00
Timber door end panel rod kit for panel heights between 1.3m and 2.5m	286-25XS	397.00
Timber door end panel rod kit for panel heights between 2.5m and 3.5m	286-35XS	441.00
Aluminium door rod kit for panel heights between 1.3m and 2.5m	286-25D	460.00
Aluminium door rod kit for panel heights between 2.5m and 3.5m	286-35D	550.00

## Rod kit accessories

Description	Code	Price
Additional hinge block for 286-25HS or 286-35HS	286-HBHS	96.00

## Bifold lock furniture

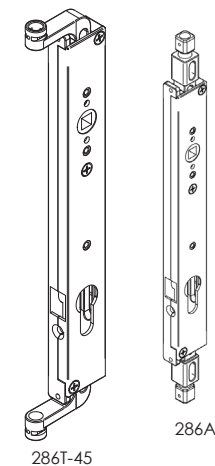
Description	Code	Price
286 bifold lock operator, non locking – satin nickel	286NSN	118.00
286 bifold lock operator, non locking – black	286NPBK	103.00
286 bifold lock operator, locking with euro cylinder, two keys and short key – satin nickel	286L-40SN	164.00
286 bifold lock operator, locking with euro cylinder, two keys and short key – black	286L-40PBK	133.00

## Lever furniture

Description	Code	Price
<b>Furniture sets supplied with fixing screws and spindle, suitable for 44mm to 57mm door thickness</b>		
288 lever furniture set – satin nickel	288-85SN	194.00
288 lever furniture set – satin black	288-85PBK	164.00
288M magnetic lever furniture set (low profile exterior, standard interior), inc. magnets – satin nickel	288M-85SN	222.00
288M magnetic lever furniture set (low profile exterior, standard interior), inc. magnets – black	288M-85PBK	194.00

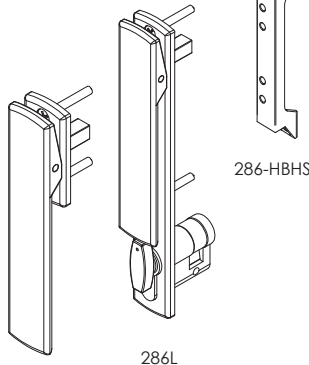
## Magnetic catches

Description	Code	Price
Surface mounted magnetic catch (2 piece) – satin nickel	828SN	74.00
Surface mounted magnetic catch (2 piece) – black	828PBK	74.00



286T-45

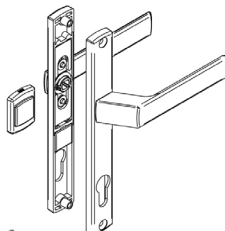
286A



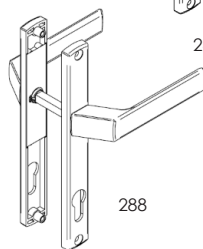
286-NBHS

286L

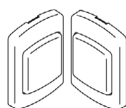
286N



288M



288



828SN